



Fullands House
Shoreditch Road, Taunton, Somerset
 Guide Price £170,000



1



1



1

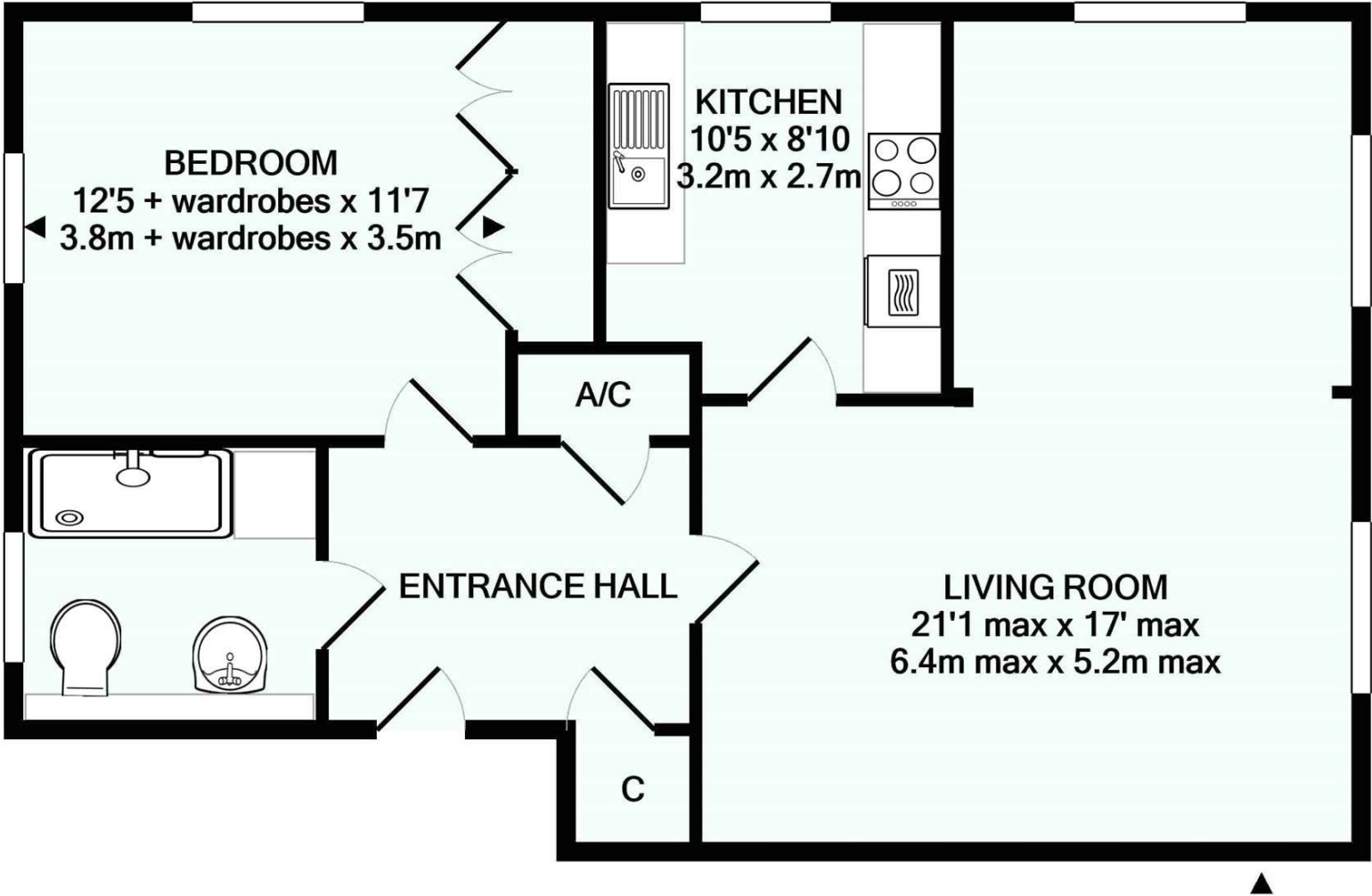


EPC



FLOOR PLAN

FULLANDS HOUSE, SHOREDITCH ROAD, TAUNTON, SOMERSET



DESCRIPTION

Over 55's Only.

This stunning apartment is situated within the Grade II Listed Fullands House, which enjoys beautiful communal grounds and an excellent standard of upkeep. With large, multiple aspect rooms, garaging and an on-site manager, we highly recommend viewings.

Open entrance hall with stairway and lift. The apartment is situated on the first floor and inside, has an entrance hall with airing cupboard & storage. The Living room is a good size, enjoying a dual aspect with beautiful views across the finely kept grounds. The kitchen is very light with space for various white goods, there is no need for a washing machine as there are communal facilities. The bedroom is a large double room, with dual aspect allowing plenty of natural light into the room, with two double wardrobes for hanging space. The Shower Room has a white suite fitted along with a large shower tray and unit for ease of access. The grounds of the property are beautifully maintained with stunning pond, mature shrubs and trees and a lovely tranquil pond.

There is garaging and communal laundry facilities.

Agents Note: Local Authority Somerset West & Taunton : Council Band F : Lease 117 yrs expires 4/10/2139 : Service Charge 1/1/2021-31/12/2021 £4,984

LOCATION

Shoreditch Road is located on the south side of Taunton approximately 1.2 miles from the town centre. There is a convenience store, butchers and post office in Shoreditch Road as well as a bus stop which runs a shuttle bus service to the town centre.

DIRECTIONS

Exit Taunton along South Road passing Richard Huish College, proceed through the traffic lights which shortly after forms Shoreditch Road. The entrance to Fullands House appears just before a bus stop, with visitor parking to the right just after entering the grounds.





VIEWING INFORMATION

Viewing by appointment with the Agents;

Bradleys Estate Agents

49-50 East Street, Taunton, Somerset, TA1 3NA
Tel. **01823 351351**

Email. **taunton@beagroup.co.uk**

Property Fact Sheet Ref:

CSD213456.4 (05/09/2023-KR)

We will treat your home like it's our own.

Relax and enjoy your move knowing
your home is in safe hands.



www.bradleys-estate-agents.co.uk

We always refer buyers and sellers to Bradleys Conveyancing. It is your decision whether you choose to deal with Bradleys Conveyancing. Should you decide to use Bradleys Conveyancing you should know that we would receive an average referral fee of £237 from them for recommending you to them. As we provide them with a regular supply of work you benefit from a competitive price on a no purchase, no fee basis. (excluding disbursements).

MORTGAGE ADVICE is available to all clients of Bradleys Estate Agents through Bradleys Financial Management Ltd. Bradleys Financial Management Ltd. is an Appointed Representative of Sesame Ltd, which is authorised and regulated by the Financial Services Authority. Bradleys Financial Management Ltd, Bradleys Group Head Office, 7 Stevenstone Road, Exmouth, EX8 2EP Tel: 01395 222370 Email: financial@beagroup.co.uk

Bradleys Estate Agents Limited for themselves and for the vendor of this property whose agents they are, give notice that:- (1) These particulars do not constitute any part of an offer or a contract. (2) All statements contained in these particulars are made without responsibility on the part of Bradleys Estate Agents Limited. (3) None of the statements contained in these particulars are to be relied upon as a statement or representation of fact. (4) Any intending purchaser must satisfy himself/herself by inspection or otherwise as to the correctness of each of the statements contained in these particulars. (5) The vendor does not make or give and neither do Bradleys Estate Agents Limited nor any person in their employment has any authority to make or give any representation or warranty whatever in relation to this property. (6) Where every attempt has been made to ensure the accuracy of the floorplan contained here, measurements of doors, windows, rooms and any other items are approximate and no responsibility is taken for any error, omission, or mis-statement. This plan is for illustrative purposes only and should be used as such by any prospective purchaser. The services, systems and appliances shown have not been tested and no guarantee as to their operability or efficiency can be given. Floorplans made with Metropix ©2007.