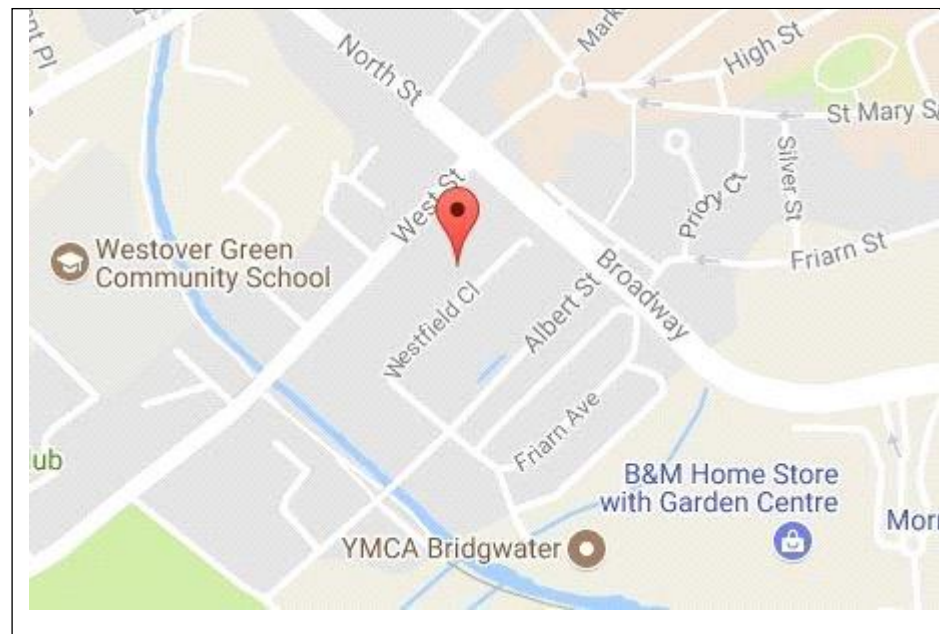
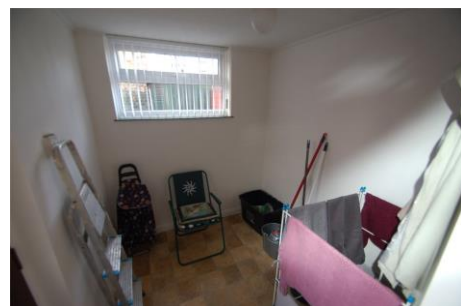




Whilst every attempt has been made to ensure the accuracy of the floor plan contained here, measurements of doors, windows, rooms and any other items are approximate and no responsibility is taken for any error, omission, or mis-statement. This plan is for illustrative purposes only and should be used as such by any prospective purchaser. The services, systems and appliances shown have not been tested and no guarantee as to their operability or efficiency can be given.

Made with Metropix ©2017



Westfield Close, Bridgwater, TA6

Asking Price: £142,500 Freehold

- 3 Bedrooms
- Porch
- Entrance Hall
- Cloakroom
- Kitchen
- Lounge
- Utility Room
- Bathroom

Set on the WEST SIDE of the TOWN is this THREE BEDROOM mid terrace property with a KITCHEN/BREAKFAST ROOM, LIVING ROOM, CLOAKROOM, UTILIY ROOM and good sized bedrooms. Courtyard garden and within easy walking distance of town. EPC E.

Bridgwater Sales

34-35 Cornhill, Bridgwater

Somerset, TA6 3BY

t: **01278 455255**

e: bridgwater@cjhole.co.uk

www.cjhole.co.uk

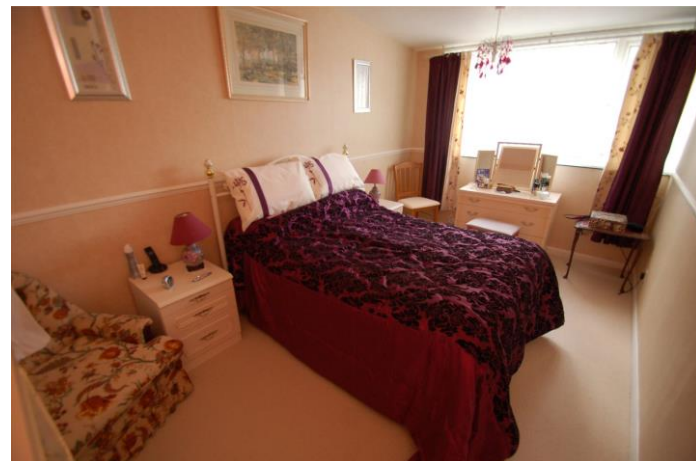
Annamgram Estates Ltd. trading as CJ Hole for themselves and for the vendors or lessors of this property whose agents they are given notice that:
(i) the particulars are produced in good faith, are set out as a general guide only and do not constitute part of any contract;
(ii) no person in the employment of Annamgram Estates Ltd. trading as CJ Hole has any authority to make or give any representation or warranty whatever in relation to this property



www.cjhole.co.uk

Freehold





Porch Door to:

Entrance Hall 16'6"x6'10" (5.03mx2.08m) Stairs to first floor, telephone point, cupboard and doors to:

Cloakroom 5'5"x2'7" (1.65mx0.79m) uPVC double glazed frosted window to front, WC and WHB.

Kitchen 13'6"x8'8" (4.11mx2.64m) uPVC double glazed window to front, space for cooker, gas boiler, range of eye and base level cupboards with draws and radiator.

Lounge 15'9"x15'8" (4.8mx4.78m) Double sliding doors to rear, two radiators, hatch to kitchen, TV Aerial and door to utility room.

Utility Room 15'9"x15'8" (4.8mx4.78m) uPVC double glazed window to rear, radiator and door to garden.

Landing 9'6"x6'2" (2.9mx1.88m) An airing cupboard and access to all first floors doors.

Bedroom One 14'9"x8'10" (4.5mx2.7m) uPVC double glazed window to rear and fitted wardrobe cupboard.

Bedroom Two 12'3"x9'4" (3.73mx2.84m) uPVC double glazed window to front and fitted wardrobe cupboards.

Bedroom Three 11'10"x6'9" (3.6mx2.06m) uPVC double glazed window to rear.

Bathroom 7'9"x6'2" (2.36mx1.88m) uPVC double glazed frosted window to front, WC, wash hand basin, radiator and walk-in shower with thigh height barrier.



Front Garden Laid mainly to slabs with a border flower bed.

Rear Garden Small garden shed, gate to rear access and laid to slabs

"Bridgwater" mentioned in the Domesday Book as Brugie, Bridgwater has long been linked with trade and industry. Birthplace of Robert Blake (Admiral) who became known as "the Father of the Navy" due to his being responsible for building up the largest Navy during 1640s, the house believed to be his birthplace is now the Blake Museum. Famous now for its illuminated carnival which is held in November and attracts in excess of a hundred thousand visitors to the town for the day. Local clubs spend much of the year designing and building carts which feature in the procession, as much as 20,000 can be spent on each cart. Being on the edge of the Somerset Levels, to the north are the Mendip range and on the west the Quantock hills Bridgwater is in a central position for visiting all these areas.

Bridgwater is a market town and civil parish in Somerset. Bridgwater is situated, on the edge of the Somerset Levels. To the north of the town is the Mendip range and on the west the Quantock hills. The town lies along both sides of the River Parrett, 10 miles (16 km) from its mouth, has been a major port and trading centre and maintains a large industrial base. It is linked to Taunton by the Bridgwater and Taunton Canal. Bridgwater is located between two junctions of the M5 motorway and Bridgwater railway station is on the main railway line between Bristol and Taunton.

