



Picton Place, Marylebone, London, W1U

£1,000 per week

Additional fees apply

 3  2

This property comprises:

- Reception Room
- Kitchen
- 3 Bedrooms
- Bathroom
- Shower Room

Presented to the market is this bright and spacious three double bedroom apartment with private balcony, situated on the fourth floor with lift and wooden floors throughout. Other benefits include spacious reception with good sized balcony, separate modern fitted kitchen, three double bedrooms, family bathroom, shower room and the property is located just a minute to Oxford Street and its many amenities.

Picton Place, Marylebone, London, W1U



£1,000 per week



Amenities:

Minute from Oxford Street
Lift
Private balcony


Furnishing:

Furnished

Price:

£1,000 per week

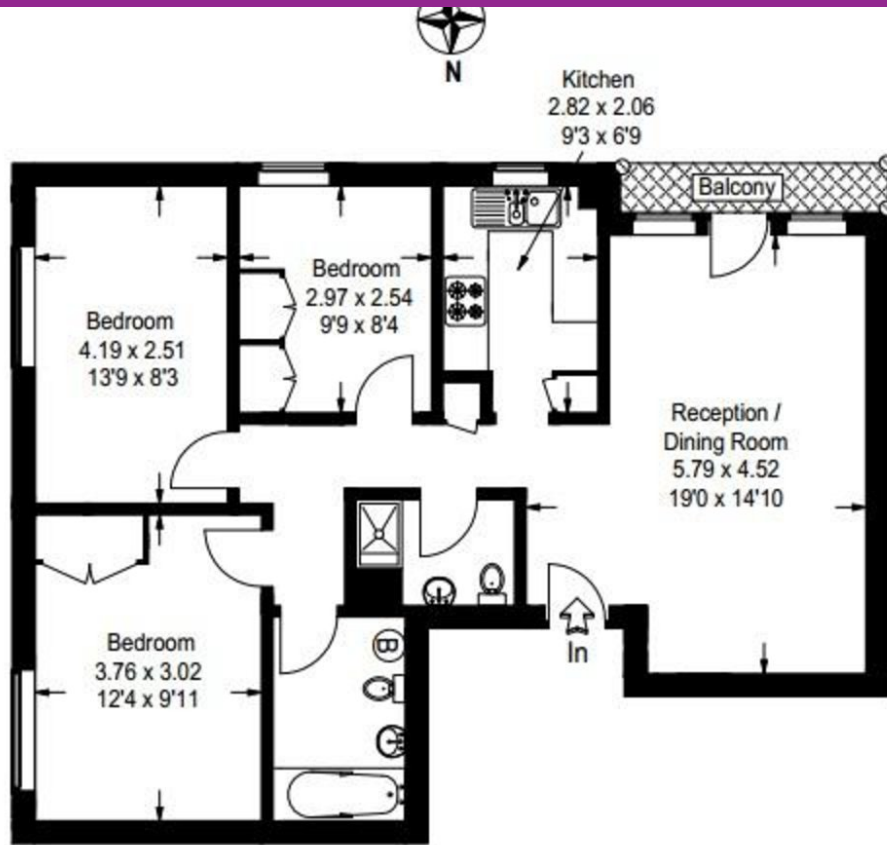
Energy Efficiency Rating

	Current	Potential
Very energy efficient - lower running costs		
(92+) A		
(81-91) B		
(69-80) C	71	80
(55-68) D		
(39-54) E		
(21-38) F		
(1-20) G		
Not energy efficient - higher running costs		
England, Scotland & Wales	EU Directive 2002/91/EC	

Approximate Gross Internal Area
75.0 sq m / 807 sq ft

Marylebone

Picton Place, Marylebone, London, W1U



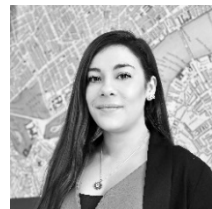
Fourth Floor

The Manors Lettings Team



Alex Hebditch
Director

dd: 0207 467 4739
m: 07824 879 403
e: alex@manors.co.uk



Eloise McGarrick
Negotiator

dd: 0207 467 4746
m: 07825 721 370
e: eloise@manors.co.uk