



Crummock Gardens, Kingsbury, London, NW9

Guide Price: £850,000

Freehold

Crummock Gardens, Kingsbury, London, NW9

Acorn Properties are delighted to offer this ideal family home on one of Kingsbury's' most sought-after roads. This Five Bedroom Extended Semi-Detached House offering generous living space comprising of Front Reception Room, Open Plan Family Room/Kitchen Diner, Downstairs Cloakroom, Family Bathroom and Three En Suites. To the Exterior we have Off Street Parking and Rear Garden. Conveniently located to local shops and to both Kingsbury and Colindale Station with Bang Bang Oriental Foodhall only a short walk away as well as superb access to the local amenities and schools. Chain Free.

Council Tax Band: E

- Freehold
- 5 Bedrooms
- 3 Ensuite Bathrooms
- Family Bathroom
- Cloakroom
- Kitchen Dining Room
- Living Room
- Off Street Parking
- Garden
- Chain Free

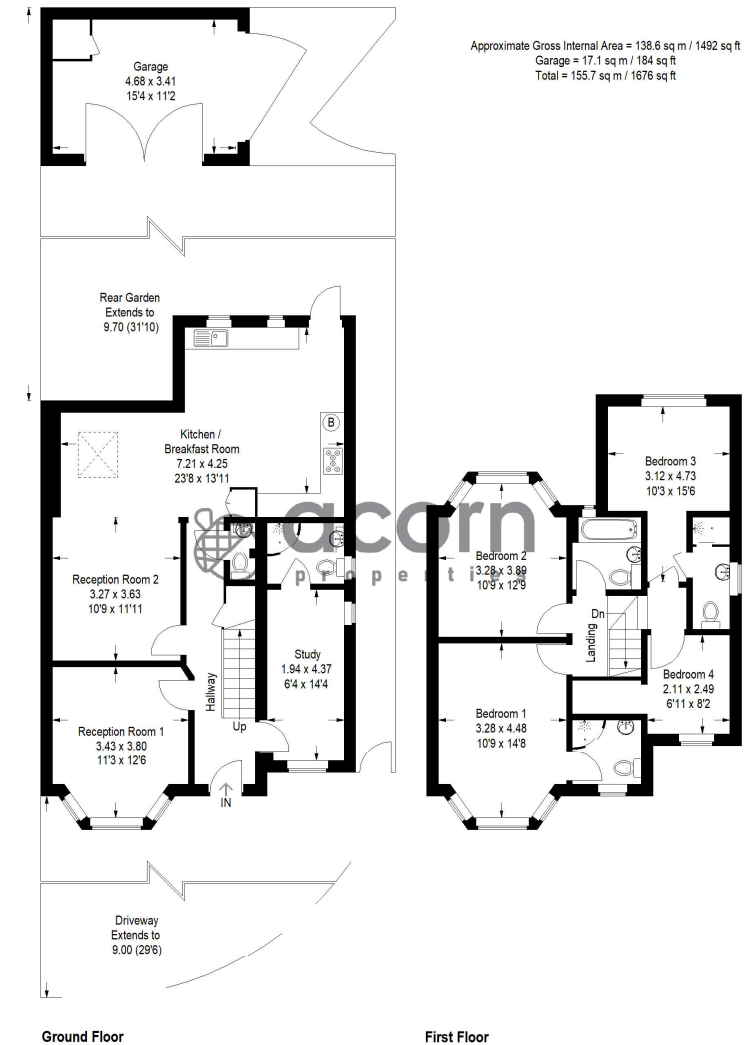
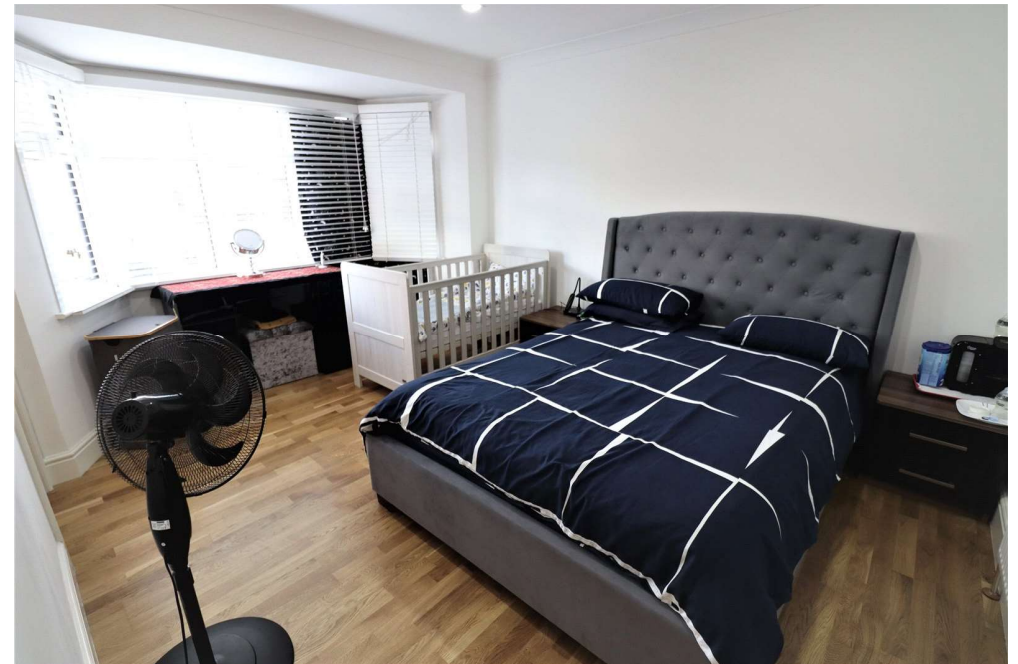


Illustration for identification purposes only, measurements are approximate, not to scale.





Energy Efficiency Rating		
	Current	Potential
Very energy efficient - lower running costs		
(92+) A		
(81-91) B		
(69-80) C	74	84
(55-68) D		
(39-54) E		
(21-38) F		
(1-20) G		
Not energy efficient - higher running costs		
England, Scotland & Wales	EU Directive 2002/91/EC	

Acorn Properties NWL Ltd - Acorn Properties

243 Edgware Road
London
NW9 6LU

T: 02082005554
E: info@acornproperties.uk
info@acornproperties.uk

Acorn Properties NWL Ltd 243 Edgware Road London NW9 6LU

Disclaimer

Every attempt has been made to ensure accuracy, however these property particulars are approximate and for illustrative purposes only. They have been prepared in good faith and they are not intended to constitute part of an offer of contract. We have not carried out a structural survey and the services, appliances and specific fittings have not been tested. All photographs, measurements, floor plans and distances referred to are given as a guide only and should not be relied upon for the purchase of any fixture or fittings. Lease details, service charges and ground rent (where applicable) are given as a guide only and should be checked prior to agreeing a sale.