

**VIEW HOME
AVAILABLE TO SEE
CALL NOW TO ARRANGE
YOUR VIEWING - 01579 382999**



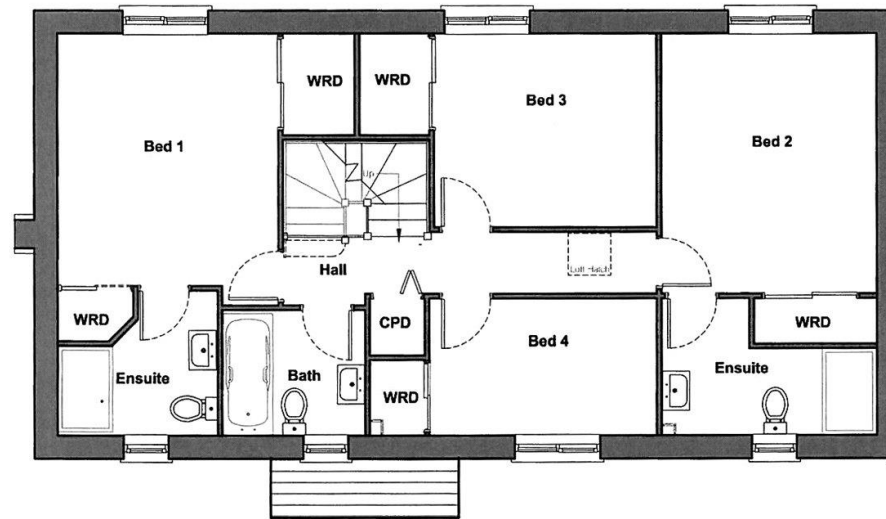
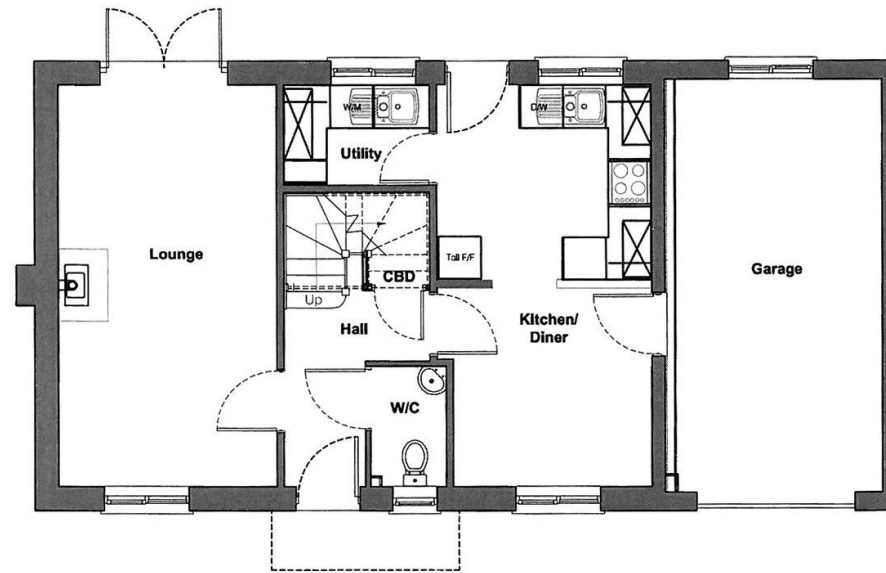
**The Market Garden
St Anns Chapel, Gunnislake, Cornwall**
Asking Price £287,500

4 2 3 TBC
EPC



FLOOR PLAN

THE MARKET GARDEN, ST ANNS CHAPEL, GUNNISLAKE, CORNWALL



DESCRIPTION

**** PART EXCHANGE AVAILABLE ****

A detached family home set on a sought after development and offering 4 bedrooms (2 with en suites), 2 reception rooms, fully fitted kitchen, integral garage, brick paved parking and garden to rear. Viewing highly recommended to appreciate.

CALL NOW TO ARRANGE A VIEWING !!

LOCATION

Set within the village of St Anns Chapel within walking distance of a primary school, filling station with comprehensive general store attached and railway station connecting to Plymouth. Callington town is about four miles away and caters for most day to day needs with its range of shops, schools, Tesco store with filling station and health centre. The city of Plymouth, the main retailing centre for the area, lies within 21 miles.

DIRECTIONS

From Callington proceed towards Tavistock along the A390 reaching St Anns Chapel after about three miles. Proceed through the village passing the Public House on the right and just before the Barbers Shop, take the right hand turning where the development can be found a short distance along on the right. Take the first left into the cul de sac where the property can be found in the right hand corner.





VIEWING INFORMATION

Viewing by appointment with the Agents;

Bradleys Estate Agents

1 New Road, Callington, Cornwall, PL17 7BE
Tel. **01579 382999**

Email. callington@beagroup.co.uk

Property Fact Sheet Ref:
BNH170454.4 (04.11.19) SS

The West Country's Largest Independent Estate Agent

*Arrange a free valuation with your
local award-winning Estate agent*



www.bradleys-estate-agents.co.uk



We always refer buyers and sellers to Bradleys Conveyancing. It is your decision whether you choose to deal with Bradleys Conveyancing. Should you decide to use Bradleys Conveyancing you should know that we would receive an average referral fee of £237 from them for recommending you to them. As we provide them with a regular supply of work you benefit from a competitive price on a no purchase, no fee basis. (excluding disbursements). MORTGAGE ADVICE is available to all clients of Bradleys Estate Agents through Bradleys Financial Management Ltd. Bradleys Financial Management Ltd. is an Appointed Representative of Sesame Ltd, which is authorised and regulated by the Financial Services Authority. Bradleys Financial Management Ltd, Bradleys Group Head Office, 7 Stevenstone Road, Exmouth, EX8 2EP Tel: 01395 222370 Email: financial@beagroup.co.uk

Bradleys Estate Agents Limited for themselves and for the vendor of this property whose agents they are, give notice that:- (1) These particulars do not constitute any part of an offer or a contract. (2) All statements contained in these particulars are made without responsibility on the part of Bradleys Estate Agents Limited. (3) None of the statements contained in these particulars are to be relied upon as a statement or representation of fact. (4) Any intending purchaser must satisfy himself/herself by inspection or otherwise as to the correctness of each of the statements contained in these particulars. (5) The vendor does not make or give and neither do Bradleys Estate Agents Limited nor any person in their employment has any authority to make or give any representation or warranty whatever in relation to this property. (6) Where every attempt has been made to ensure the accuracy of the floorplan contained here, measurements of doors, windows, rooms and any other items are approximate and no responsibility is taken for any error, omission, or mis-statement. This plan is for illustrative purposes only and should be used as such by any prospective purchaser. The services, systems and appliances shown have not been tested and no guarantee as to their operability or efficiency can be given. Floorplans made with Metropix ©2007.