



Lower Drift
Buryas Bridge, Penzance, Cornwall
Guide Price £300,000



0



0



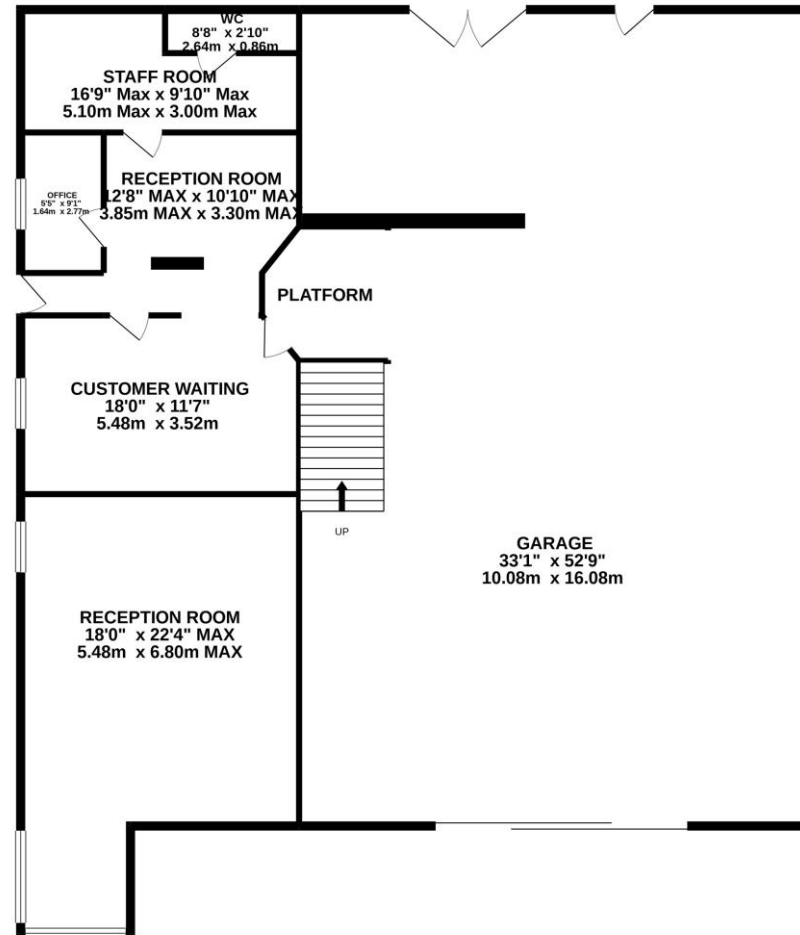
0



EPC



GROUND FLOOR
2725 sq.ft. (253.2 sq.m.) approx.



TOTAL FLOOR AREA : 2725 sq.ft. (253.2 sq.m.) approx.
Made with Metropix ©2021

DESCRIPTION

LOCATION

DIRECTIONS

VIEWING INFORMATION

Viewing by appointment with the Agents;

Bradleys Estate Agents

27A Market Place, Penzance, Cornwall, TR18 2JD

Tel. **01736 360605**

Email. **penzance@beagroup.co.uk**

Property Fact Sheet Ref:

BNH210154

We will treat your home like it's our own.

Relax and enjoy your move knowing
your home is in safe hands.



www.bradleys-estate-agents.co.uk



We always refer buyers and sellers to Bradleys Conveyancing. It is your decision whether you choose to deal with Bradleys Conveyancing. Should you decide to use Bradleys Conveyancing you should know that we would receive an average referral fee of £237 from them for recommending you to them. As we provide them with a regular supply of work you benefit from a competitive price on a no purchase, no fee basis. (excluding disbursements).

MORTGAGE ADVICE is available to all clients of Bradleys Estate Agents through Bradleys Financial Management Ltd. Bradleys Financial Management Ltd. is an Appointed Representative of Sesame Ltd, which is authorised and regulated by the Financial Services Authority. Bradleys Financial Management Ltd, Bradleys Group Head Office, 7 Stevenstone Road, Exmouth, EX8 2EP Tel: 01395 222370 Email: financial@beagroup.co.uk

Bradleys Estate Agents Limited for themselves and for the vendor of this property whose agents they are, give notice that:- (1) These particulars do not constitute any part of an offer or a contract. (2) All statements contained in these particulars are made without responsibility on the part of Bradleys Estate Agents Limited. (3) None of the statements contained in these particulars are to be relied upon as a statement or representation of fact. (4) Any intending purchaser must satisfy himself/herself by inspection or otherwise as to the correctness of each of the statements contained in these particulars. (5) The vendor does not make or give and neither do Bradleys Estate Agents Limited nor any person in their employment has any authority to make or give any representation or warranty whatever in relation to this property. (6) Where every attempt has been made to ensure the accuracy of the floorplan contained here, measurements of doors, windows, rooms and any other items are approximate and no responsibility is taken for any error, omission, or mis-statement. This plan is for illustrative purposes only and should be used as such by any prospective purchaser. The services, systems and appliances shown have not been tested and no guarantee as to their operability or efficiency can be given. Floorplans made with Metropix ©2007.