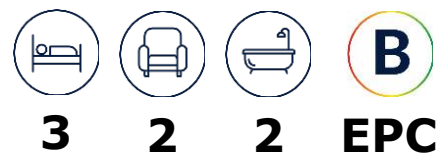




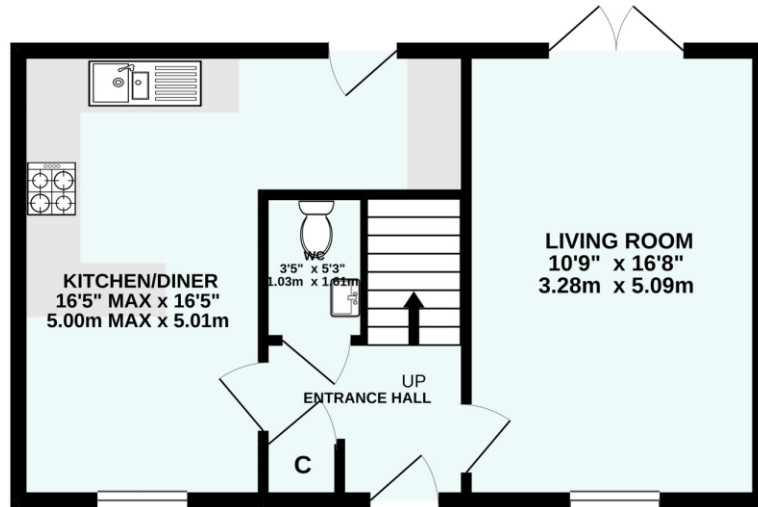
Stret Grifles
Nansledan, Newquay
Guide Price £335,000



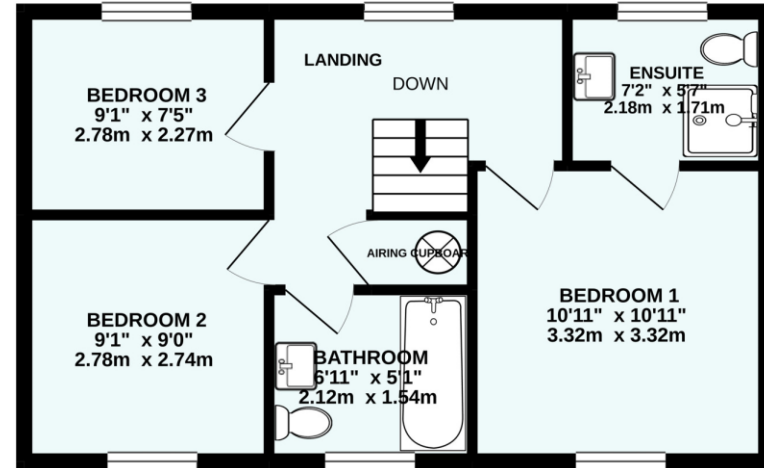
FLOOR PLAN

STRET GRIFLES, NANSLEDAN, NEWQUAY

GROUND FLOOR



1ST FLOOR



DESCRIPTION

No onwards chain.

Available with no onward chain we offer this contemporary, modern spacious 3 bedroom detached family home built to a very high standard. Entrance hall with ground floor cloakroom, sitting room with double doors onto rear garden. High spec kitchen with integrated oven, gas hob, extractor over and dining area. Master bedroom with en suite shower room, two further bedrooms and family bathroom. Enclosed large level rear garden with rear gate providing access to car port. The property benefits from gas central heating and wood framed double glazed windows. All blinds are included in the sale.

LOCATION

Newquay, one of the nation's favourite seaside towns, is perched on Cornwall's Atlantic Cliffs. 11 sandy beaches are within easy reach with the renowned Fistral beach defining Newquay as the surf centre of Europe and hosting the Boardmasters tour each year. The town offers a variety of restaurants and bars for the evening as well as all the amenities of a thriving Cornish town. The airport provides easy links to London and beyond and the town is only a short drive from the main A30 trunk road linking Newquay to the whole of Cornwall and beyond. Truro is approx 16 miles away.

DIRECTIONS

From the A30 heading towards Newquay exit at the turning for the A39 (St Column Road). After approx. 0.8 miles at the roundabout take the A392 Newquay Rd, signposted for Quintrell Downs. AT the junction of the A3058 turn right onto Quintrell Road. The Nansledan development is on the left, take the second left on to Stret Grifles, the property is the first one on the left.





VIEWING INFORMATION

Viewing by appointment with the Agents;

Bradleys Estate Agents

3A Berry Road, Newquay, Cornwall, TR7 1SF

Tel. **01637 850500**

Email. newquay@beagroup.co.uk

Property Fact Sheet Ref:

NEW200178

We will treat your home like it's our own.

Relax and enjoy your move knowing
your home is in safe hands.



www.bradleys-estate-agents.co.uk



We always refer buyers and sellers to Bradleys Conveyancing. It is your decision whether you choose to deal with Bradleys Conveyancing. Should you decide to use Bradleys Conveyancing you should know that we would receive an average referral fee of £237 from them for recommending you to them. As we provide them with a regular supply of work you benefit from a competitive price on a no purchase, no fee basis. (excluding disbursements). MORTGAGE ADVICE is available to all clients of Bradleys Estate Agents through Bradleys Financial Management Ltd. Bradleys Financial Management Ltd. is an Appointed Representative of Sesame Ltd, which is authorised and regulated by the Financial Services Authority. Bradleys Financial Management Ltd, Bradleys Group Head Office, 7 Stevenstone Road, Exmouth, EX8 2EP Tel: 01395 222370 Email: financial@beagroup.co.uk

Bradleys Estate Agents Limited for themselves and for the vendor of this property whose agents they are, give notice that:- (1) These particulars do not constitute any part of an offer or a contract. (2) All statements contained in these particulars are made without responsibility on the part of Bradleys Estate Agents Limited. (3) None of the statements contained in these particulars are to be relied upon as a statement or representation of fact. (4) Any intending purchaser must satisfy himself/herself by inspection or otherwise as to the correctness of each of the statements contained in these particulars. (5) The vendor does not make or give and neither do Bradleys Estate Agents Limited nor any person in their employment has any authority to make or give any representation or warranty whatever in relation to this property. (6) Where every attempt has been made to ensure the accuracy of the floorplan contained here, measurements of doors, windows, rooms and any other items are approximate and no responsibility is taken for any error, omission, or mis-statement. This plan is for illustrative purposes only and should be used as such by any prospective purchaser. The services, systems and appliances shown have not been tested and no guarantee as to their operability or efficiency can be given. Floorplans made with Metropix ©2007.