

## One Bedroom Apartment

**Birchett Road, Aldershot, GU11 1LB**

Offers in excess of: £145,000

- One Bedroom Apartment
- Lounge/Diner
- Modern Kitchen
- Allocated Parking
- Communal Grounds
- Town Centre Location
- Estimated Rental Figure £750 pcm
- EPC : D (67)



## Description

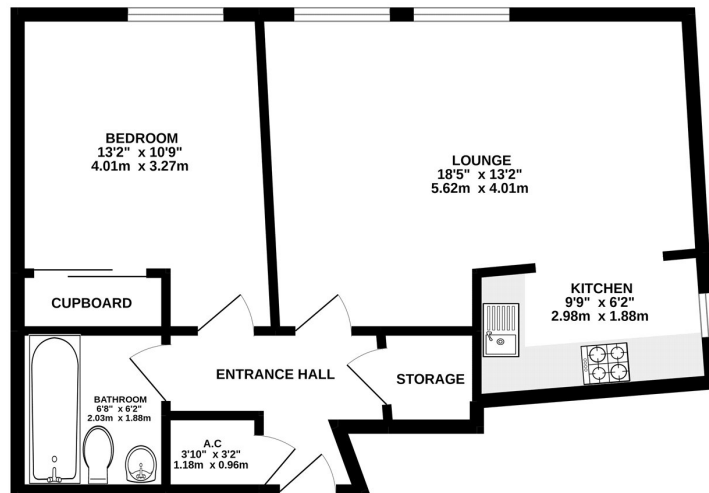
Conveniently located within the centre of Aldershot Town Centre and within close proximity to both mainline train and bus stations, this well presented apartment is offered with no onward chain complications. Accessed via a communal entrance with entry phone system the accommodation comprises of an entrance hall, 18' lounge, modern kitchen, bathroom and a double bedroom.

## Outside

There is underground secure parking with one allocated parking space. There is also communal grounds.

## Floorplan

GROUND FLOOR



Whilst every attempt has been made to ensure the accuracy of the floorplan contained herein, measurements of doors, windows, rooms and any other items are approximate and no responsibility is taken for any error, omission or mis-statement. This plan is for illustrative purposes only and should be read as such by any prospective purchaser. The services, systems and appliances shown have not been tested and no guarantee as to their operability or efficiency can be given.  
Made with Metropix 6/2022



To arrange a viewing please contact:

Tel: 01252 361550

Email: [info@bridges.co.uk](mailto:info@bridges.co.uk)

Important Notice - These particulars are set out as a general outline only for the guidance of intended purchasers and do not form part of any offer or contract and must not be relied upon as statements or representations of fact. Purchasers must satisfy themselves by inspection or otherwise as to their correctness.