



One Bedroom Apartment

Regent Court, Fleet, Hampshire, GU51 3YA

Guide Price: £175,000

- One Double Bedroom
- Second Floor Apartment
- Walking Distance to Fleet Station
- Extended Lease
- 15' Lounge
- Allocated Parking
- No Onward Chain
- EPC Rating : C (77)



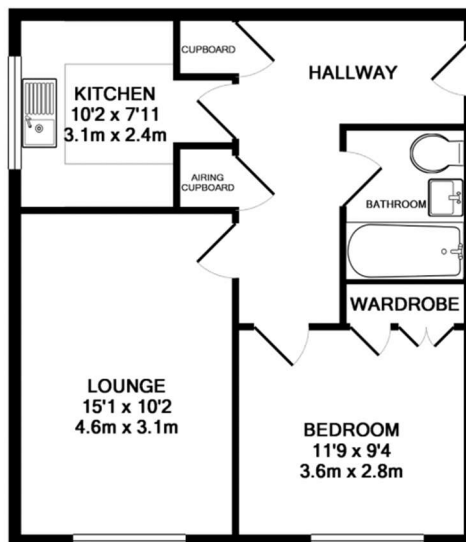
Description

Located within easy reach of the Fleet town centre and mainline railway station is this one bedroom, second floor apartment. The property benefits from a kitchen and bathroom, a double bedroom with fitted wardrobes and a generous 15ft lounge. The property is surrounded by communal grounds and has allocated parking. It is being offered with no onward chain and has an extended lease.

Outside

The property has communal grounds around the exterior of the building and allocated parking. Note: photographs were taken prior to current tenants occupancy.

Floorplan



Whilst every attempt has been made to ensure the accuracy of the floor plan contained here, measurements of doors, windows, rooms and any other items are approximate and no responsibility is taken for any error, omission, or mis-statement. This plan is for illustrative purposes only and should be used as such by any prospective purchaser. The services, systems and appliances shown have not been tested and no guarantee as to their operability or efficiency can be given.
Made with Metropix ©2019



To arrange a viewing please contact:

Tel: 01252 361550

Email: info@bridges.co.uk

Important Notice - These particulars are set out as a general outline only for the guidance of intended purchasers and do not form part of any offer or contract and must not be relied upon as statements or representations of fact. Purchasers must satisfy themselves by inspection or otherwise as to their correctness.