

One Bedroom Apartment

Collingwood, Farnborough, GU14 6LX

Offers in excess of: £220,000

- One Double Bedroom
- First Floor Apartment
- Modern Bathroom
- Kitchen with Appliances
- Two Allocated Parking Spaces
- Sycamore Park Development
- Estimated Rental Price £900 pcm
- EPC : C (76)



Description

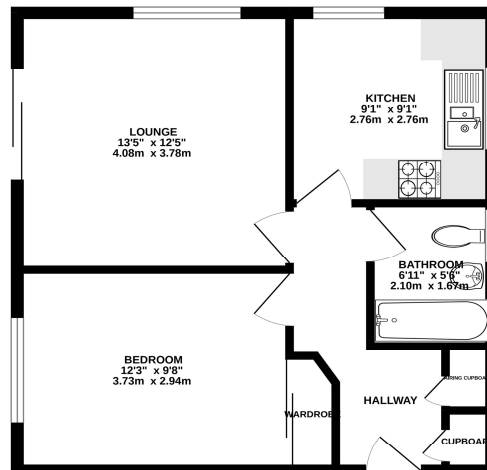
Bridges are delighted to offer this well presented one double bedroom first floor apartment to the market. This apartment is situated in the ever popular Sycamore Park development and is within easy access of Farnborough town centre, mainline train station and North Camp train station. Accessed via a communal entrance with a secure entry phone system the accommodation comprises of an entrance hall, double aspect living room with Juliette balcony, modern double aspect kitchen with appliances, modern bathroom, double bedroom with fitted wardrobe, two allocated parking spaces and communal grounds.

Outside

Externally this property offers well maintained communal grounds and two allocated parking spaces.

Floorplan

GROUND FLOOR



Whilst every attempt has been made to ensure the accuracy of the floorplan contained here, measurements of floors, windows, doors and any other items are approximate and do not necessarily conform to any one standard or the contract. The plan is for illustrative purposes only and should be used as a guide only. prospective purchaser. The fixtures, fittings and appliances shown here are for illustrative purposes only and do not constitute an offer in their own right or otherwise can be given.



To arrange a viewing please contact:

Tel: 01252 361550

Email: info@bridges.co.uk

Important Notice - These particulars are set out as a general outline only for the guidance of intended purchasers and do not form part of any offer or contract and must not be relied upon as statements or representations of fact. Purchasers must satisfy themselves by inspection or otherwise as to their correctness.