

One Bedroom Apartment, Retirement

Hammond Way, Yateley, GU46 7AG

Asking Price: £225,000

- Double Bedroom
- First Floor with Lift Access
- Luxury Retirement Apartment
- Village Environment
- Use of Gym, Sauna and Pool
- Beautifully Presented
- Stunning Communal Grounds
- EPC: B (83)



Description

Offered with no onward chain complications, this beautifully presented first floor 'assisted living' apartment is located within the heart of this recently constructed retirement village. The accommodation comprises a living room, kitchen with integrated appliances, 'as new' shower room, spacious double bedroom with fitted wardrobes and a large hallway with a further storage cupboard. This property also boasts stunning views over the communal grounds. Life at Hampshire Lakes Park offers the best of luxury retirement living combined with an independent lifestyle designed around you, creating a unique experience. A state-of-the-art wellness centre and spa offers a luxurious swimming pool, Whirlpool bath, steam room, sauna and fully equipped gymnasium. Nestled in the village centre with Cotton's deli and the Restaurant - both vibrant spaces where you can relax and be proud to entertain. Assisted Living Packages are available, which include utilities, one two course meal a day in the apartment or restaurant, weekly cleaning and laundry services. This offers a lifestyle alternative for the independently minded by providing the privacy of their own self-contained apartment, whilst having a wide range of hotel type services, as well as being able to call upon the on-site professional care and support team. The apartment comes with a range of services included as part of a package. These packages also include access to all facilities and services covered under the service charge. You can choose to top up your packages, providing you with flexible options that can be adapted to meet your changing needs and/or requirements.

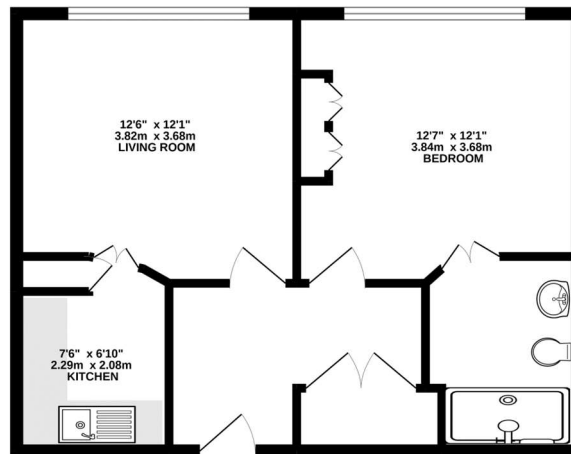
NO ONWARD CHAIN

Outside

Stunning landscaped communal grounds with seating facilities.

Floorplan

GROUND FLOOR



While every attempt has been made to ensure the accuracy of the floorplan contained here, measurements of floor, ceiling, rooms and any other items are approximate and no responsibility is taken for any error, omission or mis-statement. The sale is 'As is' and prospective buyers are advised to check the floor plan for any prospective purchase. The services, systems and appliances shown have not been tested and no guarantee is given for their operability or efficiency over the years.
Made with Lettoplan 02022



To arrange a viewing please contact:

Tel: 01252 361550

Email: info@bridges.co.uk

Important Notice - These particulars are set out as a general outline only for the guidance of intended purchasers and do not form part of any offer or contract and must not be relied upon as statements or representations of fact. Purchasers must satisfy themselves by inspection or otherwise as to their correctness.