



central
1992

0208 520 0033
enquiries@central-
estates.co.uk

179 Hoe Street
London
E17 3AP

central-estates.co.uk







Park Court

Grosvenor Park Road E17 9PE

First Floor Leasehold Flat
Guide Price £375,000 - £400,000





-  **0.3 miles**  **1**
-  **Outside Space**  **3**
-  **None**  **1**

Park Court E17

Guide Price £375,000 - £400,000
Flat/Apartment

Walking into this property you'll no doubt be blown away by the sheer size and well-planned layout this home has to offer. With a fitted kitchen and spacious lounge, the ground floor of this split level apartment is wonderfully bright and airy. On the first floor is a fitted bathroom and three good sized bedrooms. With the addition of a private balcony. The heart of Walthamstow Village, with its shops and restaurants, is one road away and it's a short walk to The Mall shopping centre and the longest street market in Europe. You will also benefit from access to the communal garden.

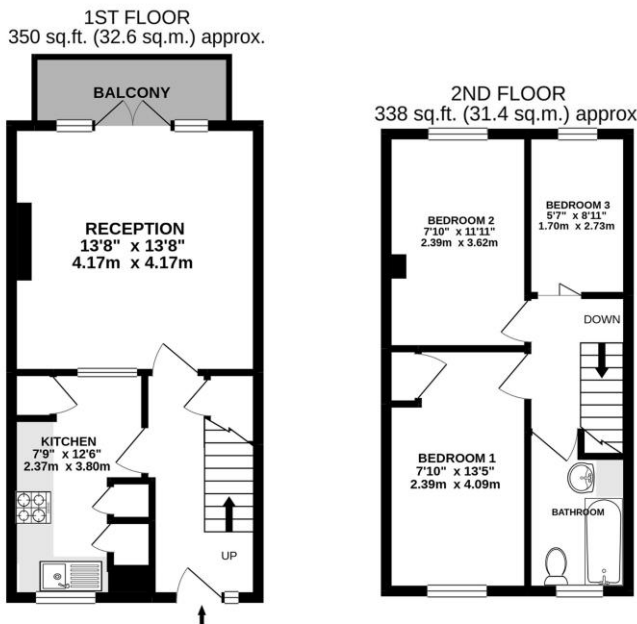
With Walthamstow Central Station a five-minute walk away commuting in to Central London and The West End is just 20 minutes on the Victoria Line Tube or Overground trains. Walthamstow Village is home to a variety of trendy restaurants, cafes and shops making this the perfect destination.

Floor Plans

Park Court, E17



Approximate Gross Internal Area 690 sq. ft - 64 sq. m.



Features

- Three Bedrooms
- First Floor Flat
- Split Level
- Spacious Throughout
- Private Balcony
- Outside Space
- Fantastic Location
- Approx. 690 sq. ft.

1st Floor Flat
Total Floor Area 690 sq. ft. - 64 sq. m. Approx.

For Illustration Purposes Only - Not To Scale.
lpaplus.com

EPC Ratings

Energy Efficiency Rating	78
Environmental Impact (Co ₂) Rating	81