



**central**  
1992

0208 520 0033  
enquiries@central-  
estates.co.uk

179 Hoe Street  
London  
E17 3AP

[central-estates.co.uk](http://central-estates.co.uk)

# Latchingdon Court Walthamstow E17 6JT

Leasehold Flat  
OIEO £290,000





- 0.08 miles**
 **1**
- Communal Space**
 **1**
- Resident Parking**
 **1**

# Latchingdon Court E17

OIEO £290,000  
Flat/Apartment

Do you want to be within close proximity to transport links? Then look no further. This one bedroom modern purpose built flat is ideally located close to Blackhorse Road Station which is great for anyone looking for a short commute into Central London.

There is a good sized lounge, spacious double bedroom, fitted kitchen, fitted bathroom, private residents parking, well maintained communal gardens and security entry phone system. The property has been decorated with modern, stylish touches throughout.

### Features

- Approx. 436 sq. ft.
- One Double Bedroom
- Security Entry System
- Spacious Lounge
- Residents Parking
- Fitted Kitchen

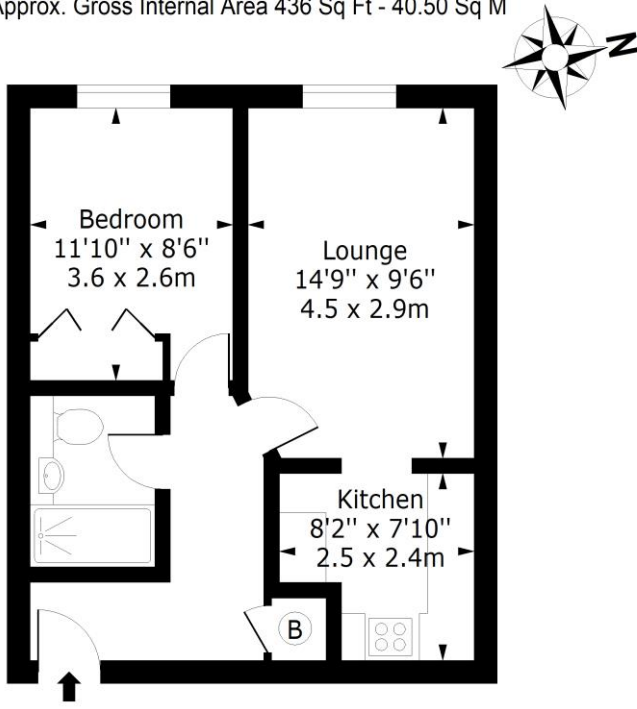
### EPC Ratings

Energy Efficiency Rating	<b>83</b>
Environmental Impact (Co <sub>2</sub> ) Rating	<b>80</b>

### Floor Plans

#### Latchingdon House, E17

Approx. Gross Internal Area 436 Sq Ft - 40.50 Sq M



#### Second Floor

Floor Area 436 Sq Ft - 40.50 Sq M

For Illustration Purposes Only - Not To Scale  
[www.lpaplus.com](http://www.lpaplus.com)