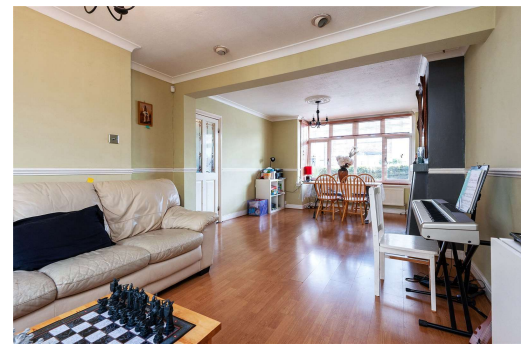


Lawrence Avenue E17 5PG

£1,750 per month
House





0.93 miles



1



Garden



3



Permit Parking



1

Lawrence Avenue E17

£1,750 per month

House

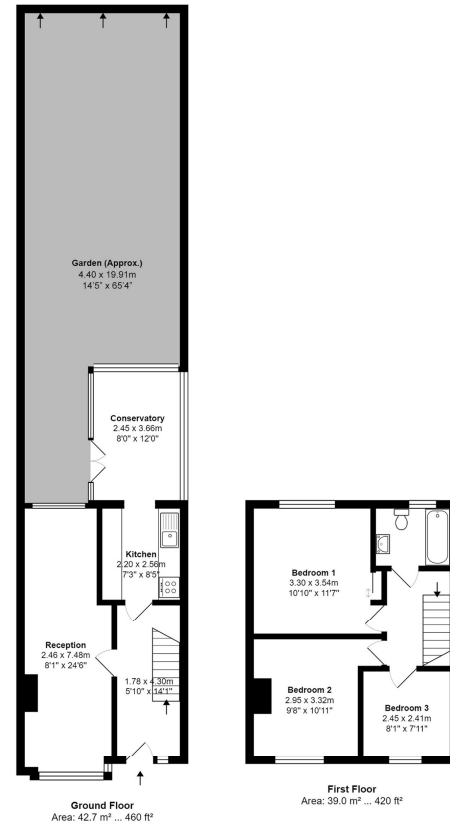
Coming available mid-December is this very spacious three bedroom house. The property has been well maintained throughout with a large through lounge, modern kitchen and conservatory to the ground floor. On the first floor you will find three bedrooms and a family bathroom. Externally the property has a garden laid to lawn.

Floor Plans

Lawrence Avenue, E17



Approximate Gross Internal Area 880 sq. ft - 81.8 sq. m.



Total Floor Area 880 sq. ft. - 81.8 sq. m. Approx.

For Illustration Purposes Only - Not To Scale.
lpaplus.com

Features

- **Three bedrooms**
- **Large through lounge**
- **Modern kitchen**
- **Conservatory**
- **Garden**

EPC Ratings

Energy Efficiency Rating **58**
 Environmental Impact (Co₂) Rating **0**