



**central**  
1992

0208 520 0033  
enquiries@central-  
estates.co.uk

179 Hoe Street  
London  
E17 3AP

[central-estates.co.uk](http://central-estates.co.uk)

# Sudeley Court, Broughton Place Walthamstow E17 5FL

## Upper Floor Leasehold Apartment £87,500





- 1.1 miles
 1
- Balcony/Communal Space
 1
- None
 1

## Sudeley Court, Broughton Place E17

£87,500  
Leasehold Apartment

(Advertised price represents 25% share) This is a great chance to buy a spacious, one-bedroom apartment within this popular development. This second-floor property features an open plan reception/kitchen, a double bedroom with a fitted wardrobe and a sleek bathroom suite. There is the added benefit of useful storage space in the hallway.

Nearby Blackhorse Road tube station you have a choice of transport links and Walthamstow Central where you can take advantage of The Mall shopping centre, or the development of a multi-screen cinema and restaurant complex. There are also delightful open-air walks in nearby nature reserves and Lloyd's Park. Sudeley Court achieves very good energy-efficiency and excellent environmental-impact ratings, thanks to exacting insulation standards, high performance glazing, a communal heating/hot water system and roof-mounted solar panels. The development also benefits from a communal courtyard/garden.

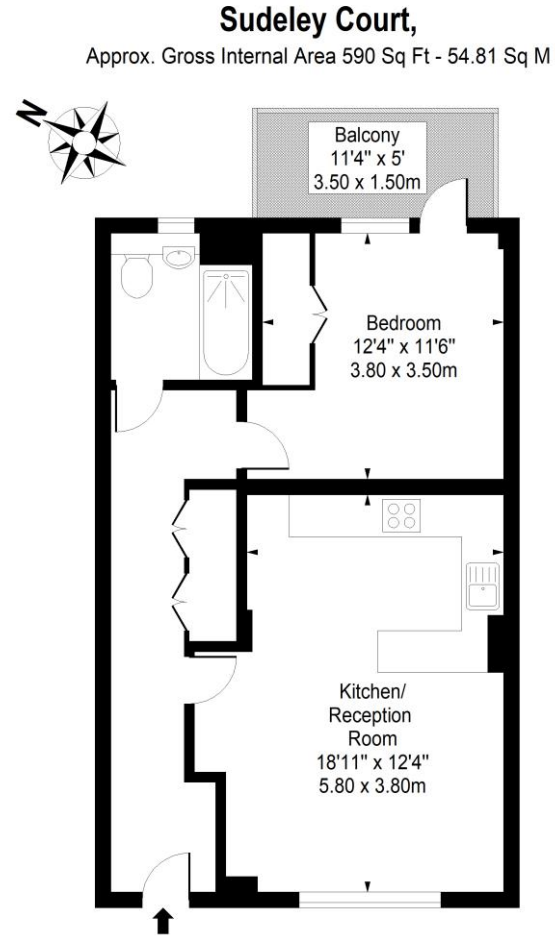
### Features

- Approx. 590 sq. ft.
- One Double Bedroom
- Open Plan Living
- Contemporary Development
- Ample Storage
- Modern Fittings
- Communal Garden Space
- Long Lease

### EPC Ratings

Energy Efficiency Rating **B**

### Floor Plans



### Second Floor

Floor Area 590 Sq Ft - 54.81 Sq M

For Illustration Purposes Only - Not To Scale  
www.lpaplus.com