



PETERSHAM HOUSE
South Kensington SW7

Carter Jonas

PETERSHAM HOUSE SOUTH KENSINGTON SW7

The apartment offers a dual aspect reception room, kitchen breakfast room, utility room, impressive master bedroom suite with dressing room and en-suite bathroom, two further double en-suite bedrooms and guest cloakroom.

Further benefits include a 360 wrap-around terrace offering stunning views of the London skyline, separate gym, covered sun terrace and a fabulous Jacuzzi.

The apartment is located moments from the shops and restaurants of South Kensington and within easy walking distance of Knightsbridge and Hyde Park.

AMENITIES

Two reception rooms • Three bedrooms • Three bathrooms
Roof terrace • Direct lift access • EPC Rating D

TENURE

Leasehold

LOCAL AUTHORITY

Royal Borough of Kensington and Chelsea

EPC

D

GUIDE PRICE

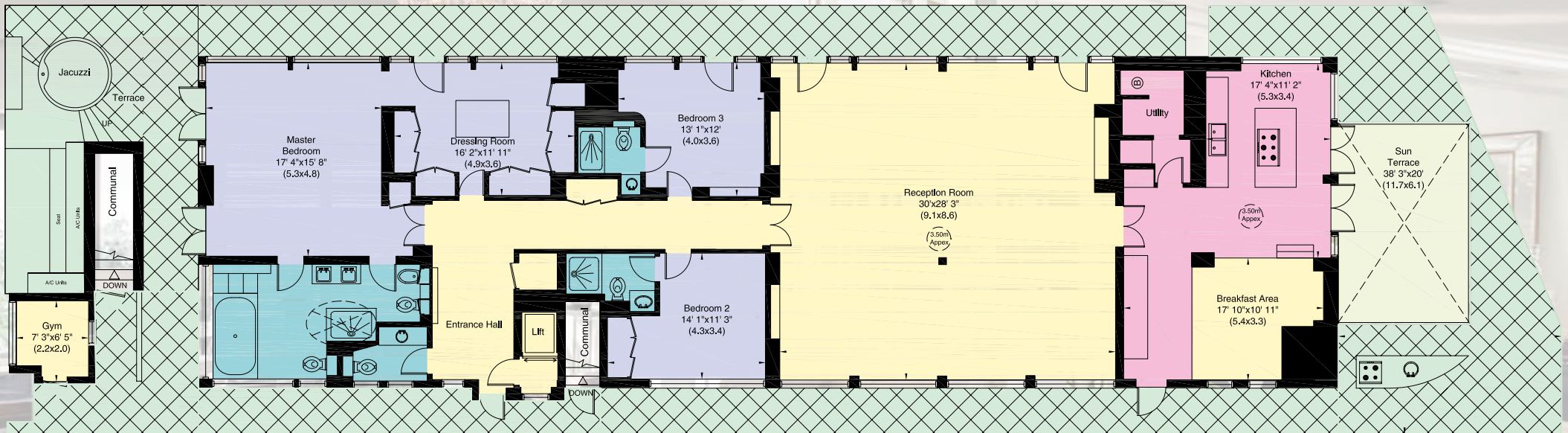
On application

THE APARTMENT HAS BEEN RENOVATED TO AN IMPECCABLY HIGH STANDARD AND LUXURIOUSLY DESIGNED THROUGHOUT WITH BESPOKE FIXTURES AND FITTINGS.





Gross Internal Area (Approx.)
 283 sq m - 3,041 sq ft Including Gym and Sun Terrace
 259 sq m - 2,786 sq ft Excluding Gym and Sun Terrace



Seventh Floor

Knightsbridge & Cheslea 020 7584 7020

knightsbridge@carterjonas.co.uk

47 Beauchamp Place, London SW3 1NX

carterjonas.co.uk

Offices throughout the UK

Energy Efficiency Rating		Current	Potential
Best energy efficiency - lower running costs			
A	92-100		
B	81-91		
C	69-80		
D	55-68		
E	41-54		
F	21-40	67	68
G	1-20		
Worst energy efficiency - higher running costs			
England & Wales			
EU Directive 2002/91/EC			

IMPORTANT INFORMATION

Our property particulars do not represent an offer or contract, or part of one. The information given is without responsibility on the part of the agents, seller(s) or lessor(s) and you should not rely on the information as being factually accurate about the property, its condition or its value. Neither Carter Jonas LLP nor any one in its employment or acting on its behalf has authority to make any representation or warranty in relation to this property. We have not carried out a detailed survey, nor tested the services, appliances or fittings at the property. The images shown may only represent part of the property and are as they appeared at the time of being photographed. The areas, measurements and distances are approximate only. Any reference to alterations or use does not mean that any necessary planning permission, building regulation or other consent has been obtained. The VAT position relating to the property may change without notice.