



Kings Croft  
KILLINGHALL

By

*harron*

[harronhomes.co.uk](http://harronhomes.co.uk)

## *The Tonbridge*

The Tonbridge an attractive, four bedroom detached home, perfect for families looking for style combined with high specification design.



- 4 bedroom detached home
- Integral single garage
- Open plan kitchen/dining
- Lounge with feature bay window
- Utility room
- 4 double bedrooms
- Dressing area to Master Bedroom with built in wardrobe



Kings Croft  
KILLINGHALL

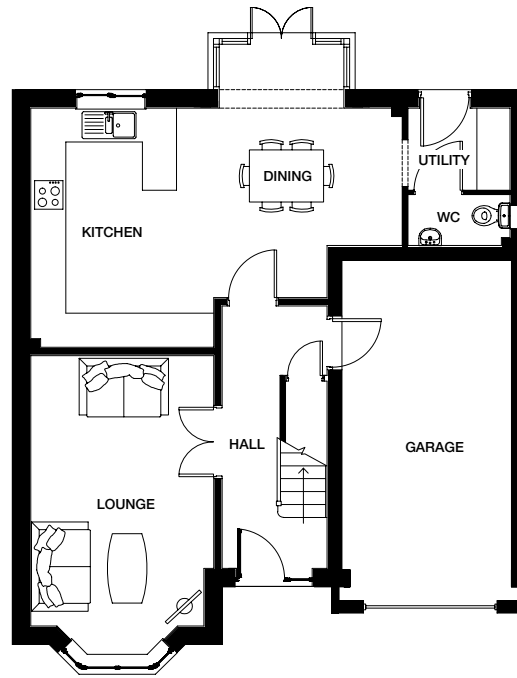
By



[harronhomes.co.uk](http://harronhomes.co.uk)

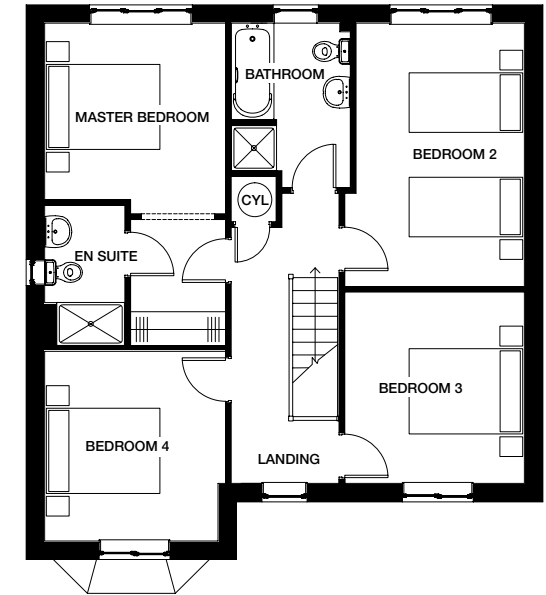
# The Tonbridge

FOUR BEDROOM  
DETACHED HOME



## GROUND FLOOR

Lounge	3053 x 5288mm	10' 0" x 17' 4" inc bay
Dining/Kitchen	6550 x 5390mm	21' 5" x 17' 8" inc bay
Utility	1445 x 1797mm	4' 8" x 5' 10"
Garage	3000 x 6000mm	9' 10" x 19' 8"



## FIRST FLOOR

Master Bedroom	3185 x 3357mm	10' 5" x 11' 0" max
Dressing	1670 x 2220mm	5' 5" x 7' 3"
En suite	1410 x 2470mm	4' 7" x 8' 1"
Bedroom 2	3162 x 4638mm	10' 4" x 15' 2"
Bedroom 3	3162 x 3372mm	10' 4" x 11' 0"
Bedroom 4	3185 x 3341mm	10' 5" x 10' 11"
Bathroom	2094 x 2898mm	6' 10" x 9' 5"

**CONSUMER  
CODE FOR  
HOME BUILDERS**

[www.consumercode.co.uk](http://www.consumercode.co.uk)

This information is intended for illustration purposes only and may be subject to change for reasons beyond our control. Each property shown may not include the features as described in the illustration or specification and the floor plans are not to scale. Dimensions supplied are accurate to within +/- 50mm (+/- 2") they are not intended to be used for carpet sizes, appliance spaces or items of furniture spaces. As a consequence this brochure should be used for guidance only and cannot be relied on to accurately describe any Specified Matters as prescribed by an Order made under the Property Misdescriptions Act 1991, nor constitute a contract, part thereof or warranty. 370707-DEC18