



Kings Croft  
KILLINGHALL

By

*harron*

[harronhomes.co.uk](http://harronhomes.co.uk)

## *The Settle V6*

Families will adore this spacious, four bedroom detached family home with integral garage and classic design features.



- 4 bedroom detached home
- Lounge with feature bay window
- Open plan kitchen/dining
- Utility room
- 4 double bedrooms
- Dressing area to Master Bedroom with built in wardrobe
- Ensuite bathroom
- Integral single garage



**Kings Croft**  
KILLINGHALL

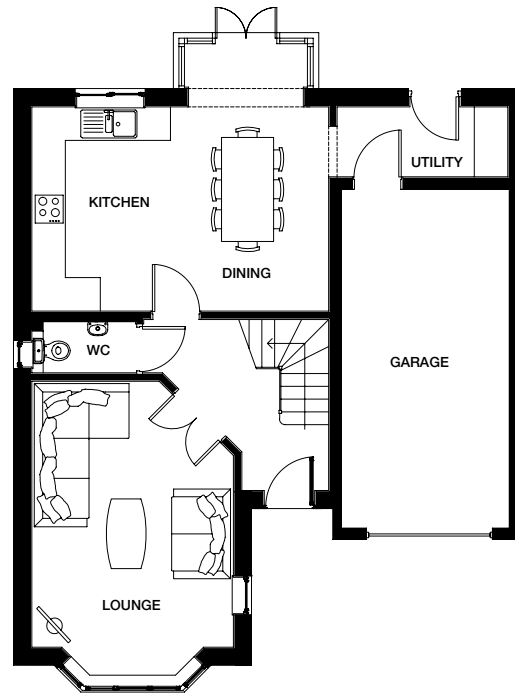
By



[harronhomes.co.uk](http://harronhomes.co.uk)

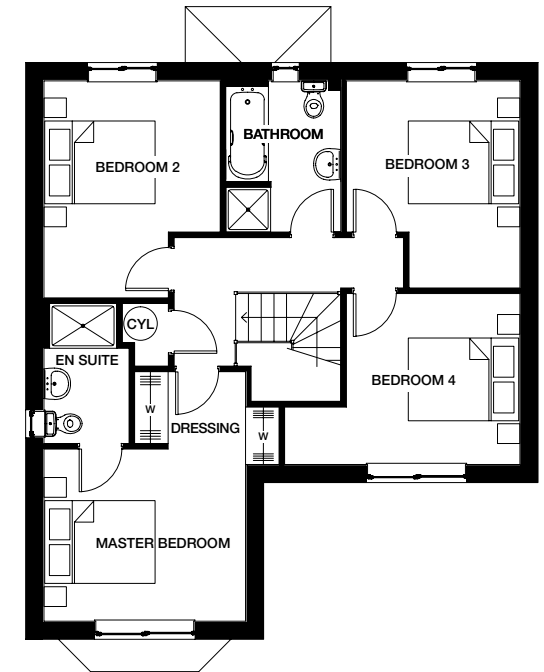
## The Settle V6

FOUR BEDROOM  
DETACHED HOME



### GROUND FLOOR

Lounge	5315 x 3615mm	17' 5" x 11' 10" inc bay
Dining/Kitchen	5300 x 4770mm	17' 4" x 15' 7" inc bay
Utility	3002 x 1250mm	9' 10" x 4' 1"



### FIRST FLOOR

Master Bedroom	4495 x 4463mm	14' 8" x 14' 7" max
En suite	2469 x 1520mm	8' 1" x 4' 11"
Bedroom 2	3875 x 3150mm	12' 8" x 10' 4"
Bedroom 3	3700 x 3052mm	12' 1" x 10' 0"
Bedroom 4	3889 x 3077mm	12' 9" x 10' 1" max
Bathroom	2700 x 2050mm	8' 10" x 6' 8"

**CONSUMER  
CODE FOR  
HOME BUILDERS**

[www.consumercode.co.uk](http://www.consumercode.co.uk)

This information is intended for illustration purposes only and may be subject to change for reasons beyond our control. Each property shown may not include the features as described in the illustration or specification and the floor plans are not to scale. Dimensions supplied are accurate to within +/- 50mm (+/- 2") they are not intended to be used for carpet sizes, appliance spaces or items of furniture spaces. As a consequence this brochure should be used for guidance only and cannot be relied on to accurately describe any Specified Matters as prescribed by an Order made under the Property Misdescriptions Act 1991, nor constitute a contract, part thereof or warranty. 370707-DEC18