



AIMLEE HOUSE

Crick, Northamptonshire

Carter Jonas

AIMLEE HOUSE, YELVERTOFT ROAD, CRICK, NORTHAMPTONSHIRE NN6 7TR

Reception Hall · Sitting Room · Dining Room · Kitchen
Family Room · Utility · Cloakroom · Five Bedrooms
Three Bathrooms · Double Garage · Parking · Gardens

THE PROPERTY

Large reception hall with tiled floor extending into the kitchen. Doors leading to principal rooms.

Sitting room comprising an attractive fireplace with stone surround and mantelpiece encasing wood burner. Oak floor. Four windows affording excellent natural light.

Dining room with wood flooring and window overlooking the front aspect.

The hub of the house is the spacious family kitchen with space for sofas and large breakfast table. Bespoke range of cabinets with quartz tops. Rangemaster Toledo cooker range. Integrated appliances including fridge, freezer, Siemens dishwasher and wine cooler. French doors opening onto the entertaining patio.

Utility room comprising a range of cabinets with a sink and space and provision for white goods.

The master bedroom is a large double room with two double built in wardrobes and a generous en suite shower room.

Bedroom two is a large double room with built in double wardrobe and en suite shower room.

Bedroom three is a large double room with a double fitted wardrobe with mirrored doors.

A BEAUTIFULLY PRESENTED FIVE BEDROOM FAMILY HOME, SITUATED IN A WELL PLACED VILLAGE FOR COMMUNICATION LINKS. THE PROPERTY OFFERS EXCELLENT WELL PRESENTED ACCOMMODATION WITH A LARGE FAMILY KITCHEN.



Beautifully appointed family bathroom comprising a large oval bath, separate shower enclosure and white suite.

The second floor comprises a large double bedroom with a range of fitted units and bedroom five/study is a double room with fitted wardrobes. A shared bathroom with toilet and washbasin.

OUTSIDE

The property has a beautifully presented walled garden comprising a large entertaining patio and lawn with borders. Double garage with an electric door, storage above and a double width block paved driveway.

LOCATION

The village of Crick has a thriving local community, offering a primary school, church, shops and public houses and is set on the Grand Union Canal where there is a large marina. Primary schooling can be found in the village with secondary schooling at Guilsborough and Rugby. Local private schools include preparatory schools at Spratton, Bilton Grange Rugby and Maidwell and public schools at Pitsford, Rugby, Stowe and Northampton School for Girls.

- M1 (Junction 18) 2 miles

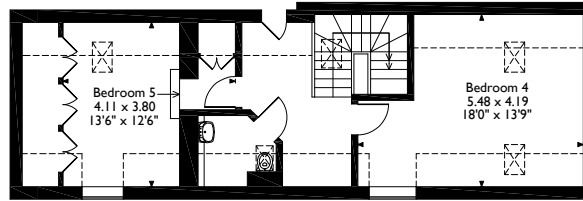
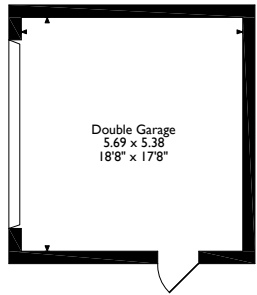
- Rugby 6 miles (London Euston 52 minutes/Birmingham 22 minutes)

- M1/M6 Junction 5 miles

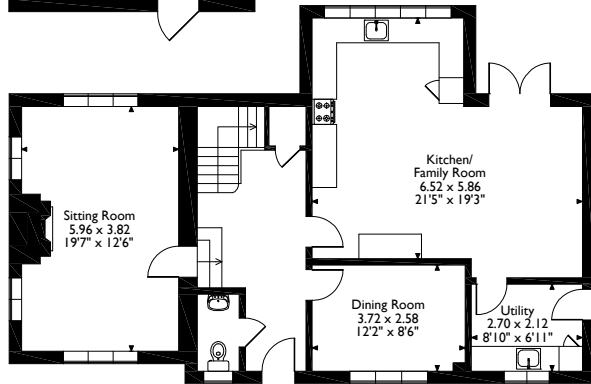
All times and distances are approximate



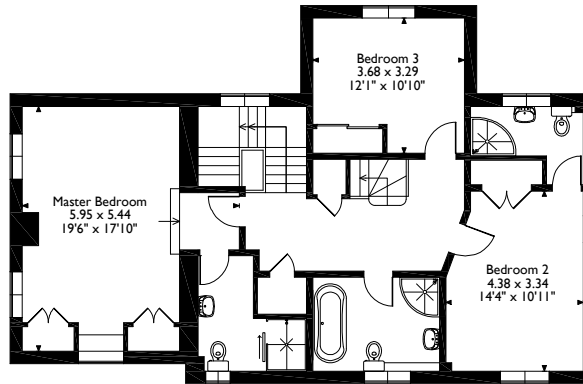
18 Yelvertoft Road Crick, Northampton
 Approximate Gross Internal Area
 Main House = 225 Sq M/2418 Sq Ft
 Garage = 31 Sq M/329 Sq Ft



Second Floor

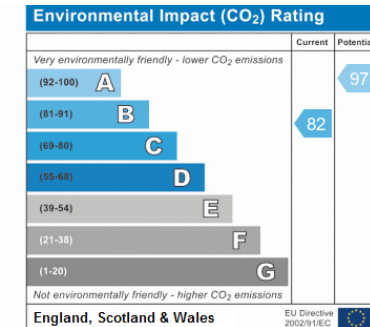
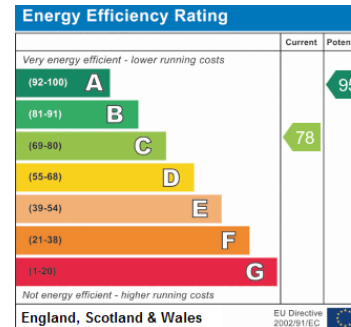


Ground Floor



First Floor

Please note that the location of doors, windows and other items are approximate and this floorplan is to be used for illustrative purposes only. Unauthorized reproduction is prohibited.



Northampton 01604 608200

northampton@carterjonas.co.uk

12 Waterside Way, Bedford Road, Northampton NN4 7XD

carterjonas.co.uk

Offices throughout the UK



IMPORTANT INFORMATION

These particulars are for general information purposes only and do not represent an offer of contract or part of one. Carter Jonas has made every attempt to ensure that the particulars and other information provided are as accurate as possible and are not intended to amount to advice on which you should rely as being factually accurate. You should not assume that the property has all necessary planning, building regulations or other consents and Carter Jonas have not tested any services, facilities or equipment. Any measurements and distances given are approximate only. Purchasers must satisfy themselves of all of the aforementioned by independent inspection or otherwise. Although we make reasonable efforts to update our information, neither Carter Jonas LLP nor anyone in its employment or acting on its behalf makes any representations warranties or guarantees, whether express or implied, in relation to the property, or that the content in these particulars is accurate, complete or up to date. Our images only represent part of the property as it appeared at the time they were taken. If you require further information please contact us.