

**Coniston Court W2**  
£675,000 leasehold

**CLUTTONS**

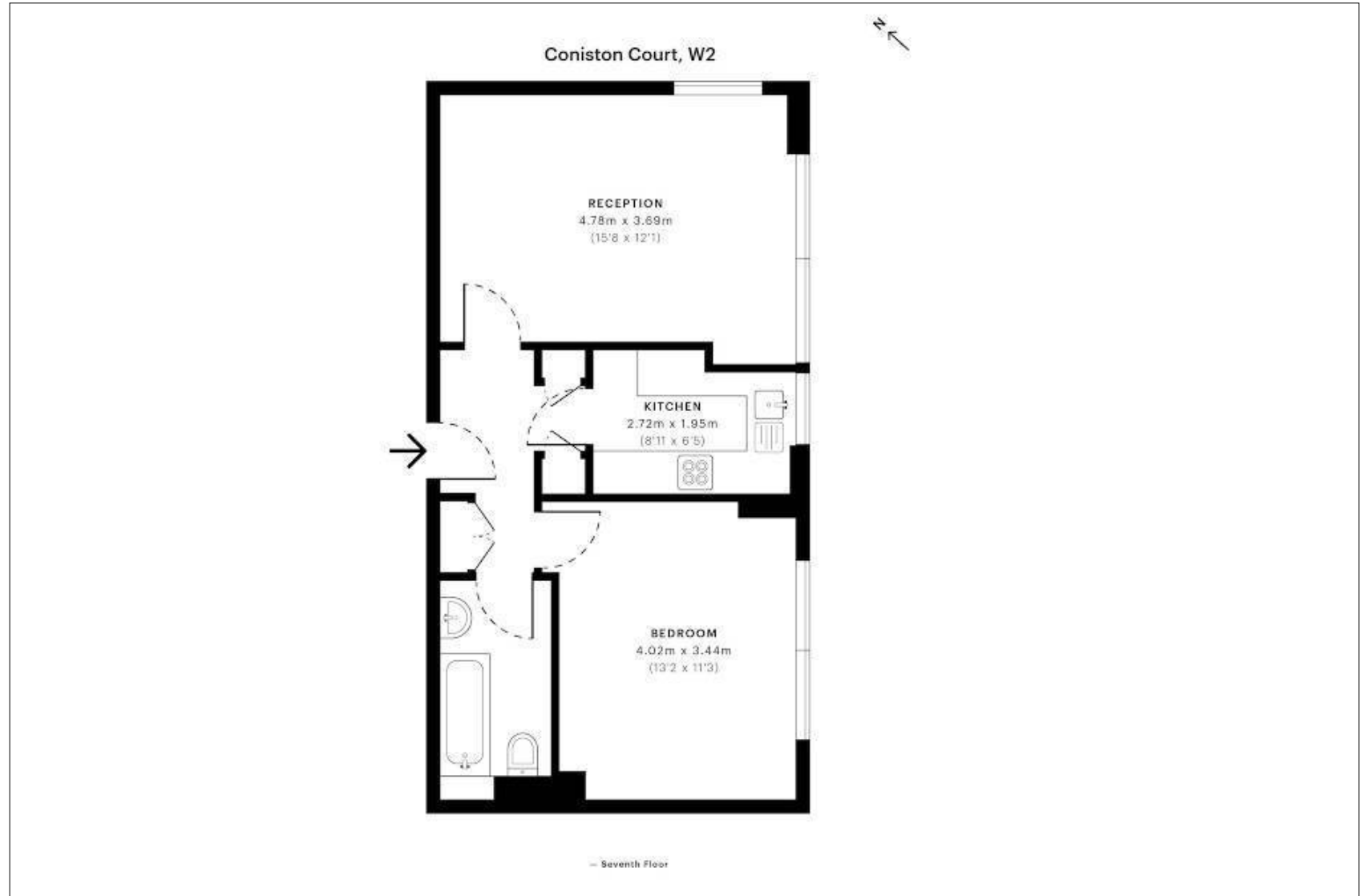


[cluttons.com](https://www.cluttons.com)

**An opportunity to acquire a well presented one bedroom apartment situated on the seventh floor of a secure block in the highly regarded Hyde Park Estate.**

The apartment comprises of a bright and airy reception room, a separate kitchen, large bedroom, family bathroom and two storage cupboards in the hallway. The property further benefits from the buildings porter and lift services.

Coniston Court is a secure development in the heart of the Hyde Park estate in W2. The building is on the doorstep of the bustling and popular Connaught Village and it's various restaurants, cafe's, shops and amenities. The landmark open green spaces and boating lakes of Hyde Park are 0.4 miles away and the nearest tube station is Marble Arch (Central Line).



Approximate gross internal area:  
489sq ft (45.4sq m)  
EPC rating: D | Ref: ALB210024



For further details contact

Scott Joseph  
020 7262 2226  
scott.joseph@cluttons.com

This is made from FSC certified paper, part of our commitment to use more sustainable materials. FSC, protecting the world's forests for the future. Please recycle.



**Cluttons**  
23 Albion Street  
London  
W2 2AS  
[cluttons.com](http://cluttons.com)

Cluttons LLP for itself and as agent for the vendor or lessor (as appropriate) gives notice that: 1. These particulars are only a general outline for the guidance of intending purchasers or lessees and do not constitute in whole or in part an offer or a Contract. 2. Reasonable endeavours have been made to ensure that the information given in these particulars is materially correct but any intending purchaser or lessee should satisfy themselves by inspection, searches, enquiries and survey as to the correctness of each statement. 3. All statements in these particulars are made without responsibility on the part of Cluttons LLP or the vendor or lessor. 4. No statement in these particulars is to be relied upon as a statement or representation of fact. 5. Neither Cluttons LLP nor anyone in its employment or acting on its behalf has authority to make any representation or warranty in relation to this property. 6. Nothing in these particulars shall be deemed to be a statement that the property is in good repair or condition or otherwise nor that any services or facilities are in good working order. 7. Photographs may show only certain parts and aspects of the property at the time when the photographs were taken and you should rely upon actual inspection. 8. No assumption should be made in respects of parts of the property not shown in photographs. 9. Any areas, measurements or distances are only approximate. 10. Any reference to alterations or use is not intended to be a statement that any necessary planning, building regulation, listed building or any other consent has been obtained. 11. Amounts quoted are exclusive of VAT if applicable.