

The Crescent W12
£3,500,000 leasehold

CLUTTONS



A fantastic three bedroom apartment situated within the famous BBC Television Centre Complex.

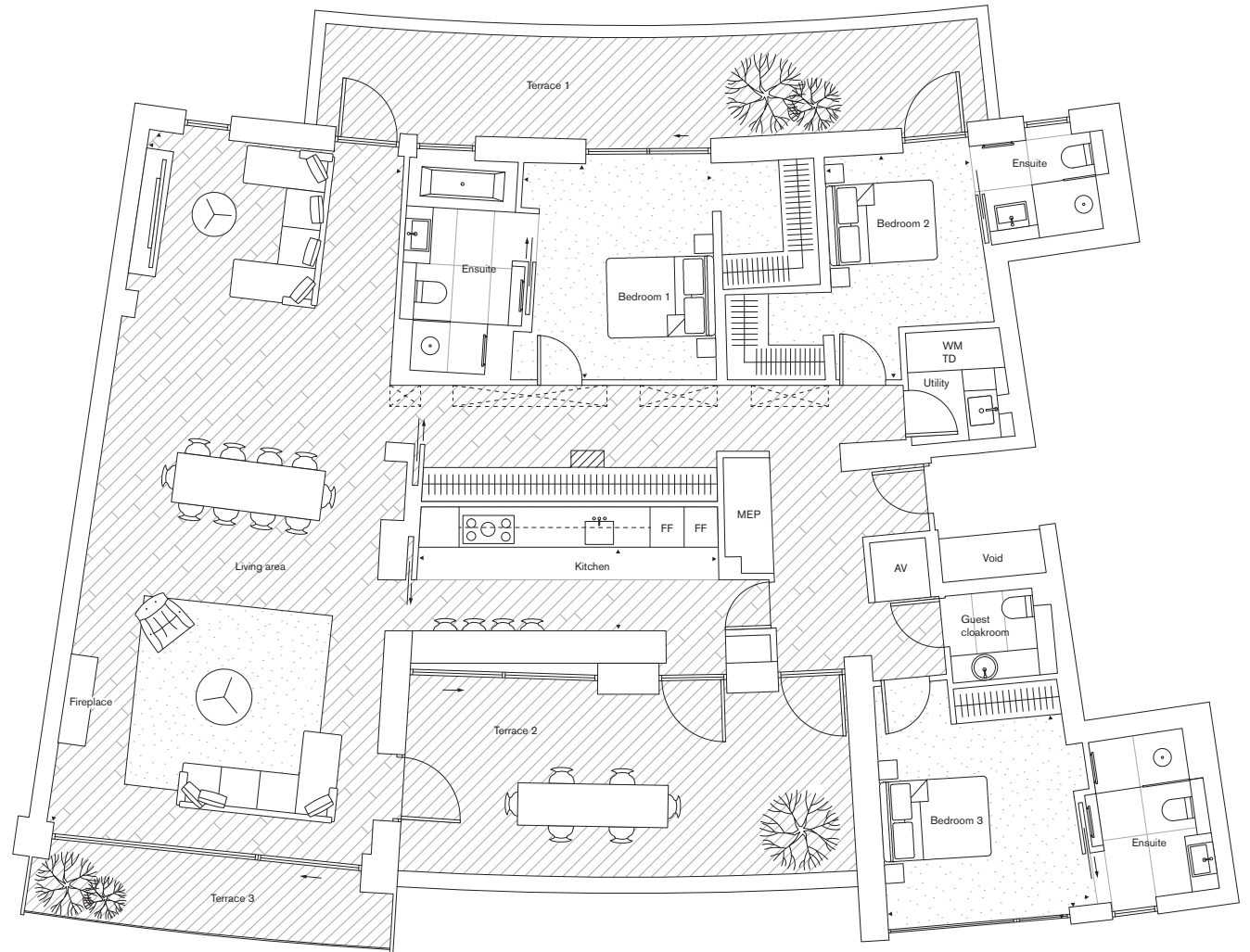
An opportunity to acquire a superb lateral apartment situated on the eighth floor of The Crescent. The apartment has been interior designed to an immaculate standard with exceptional ceiling volume throughout, and focused around a spectacular reception/living room with an open plan high-end kitchen and dining area which leads onto a terrace.

The property further comprises of the principle suite with generous wardrobe space, a good sized second bedroom suite again with great storage, and both have direct access onto a superb second terrace, and a third bedroom also with an en-suite bathroom.

The property further benefits from A/C, underfloor heating both that can be controlled remotely, a utility room, a guest cloakroom, the buildings lift and porter services and the use of the complex's incredible facilities. These ranging from meeting rooms, workspaces, a cinema, communal gardens & an on-site Gym, Spa & Health Club from Soho House. Allocated off-street parking is available by separate negotiation.

The Television Centre complex is situated within the famous and iconic BBC Television building that has been transformed by the highly reputable Stanhope PLC, into a breath-taking and unique luxury residential and commercial village. The highly sought after White City House private member club and part of the world renowned Soho group is set within the scheme. BBC Studio Works which is home to a number of the channels most popular programmes produced, is still adjacent to the Helios building.

There is a state of the art commercial building centre with a restaurant complex situated on the ground floor home to a range of first class restaurants and cafe's quite literally on your doorstep. Westfield shopping complex is less than 0.2 miles away. Shepherds Bush Market and the various amenities of Uxbridge Road are less than 0.4 miles away. Wood Lane & White City Underground Tubes are located on the opposite side of the road to the development (Circle, Hammersmith & City & Central Lines) and provide straight forward and practical access to central London.





For further details contact

Scott Joseph
020 7262 2226
Scott.Joseph@cluttons.com

Beatrice Rooney
020 7262 2226
Beatrice.Rooney@cluttons.com

Nikita Khatri
020 7262 2226
Nikita.Khatri@cluttons.com

Cluttons
23 Albion Street
London
W2 2AS
cluttons.com

This is made from FSC certified paper, part of our commitment to use more sustainable materials. FSC, protecting the world's forests for the future. Please recycle.



Cluttons LLP for itself and as agent for the vendor or lessor (as appropriate) gives notice that: 1. These particulars are only a general outline for the guidance of intending purchasers or lessees and do not constitute in whole or in part an offer or a Contract. 2. Reasonable endeavours have been made to ensure that the information given in these particulars is materially correct but any intending purchaser or lessee should satisfy themselves by inspection, searches, enquiries and survey as to the correctness of each statement. 3. All statements in these particulars are made without responsibility on the part of Cluttons LLP or the vendor or lessor. 4. No statement in these particulars is to be relied upon as a statement or representation of fact. 5. Neither Cluttons LLP nor anyone in its employment or acting on its behalf has authority to make any representation or warranty in relation to this property. 6. Nothing in these particulars shall be deemed to be a statement that the property is in good repair or condition or otherwise nor that any services or facilities are in good working order. 7. Photographs may show only certain parts and aspects of the property at the time when the photographs were taken and you should rely upon actual inspection. 8. No assumption should be made in respects of parts of the property not shown in photographs. 9. Any areas, measurements or distances are only approximate. 10. Any reference to alterations or use is not intended to be a statement that any necessary planning, building regulation, listed building or any other consent has been obtained. 11. Amounts quoted are exclusive of VAT if applicable.