

Compass House SW6
£1,700,000 leasehold

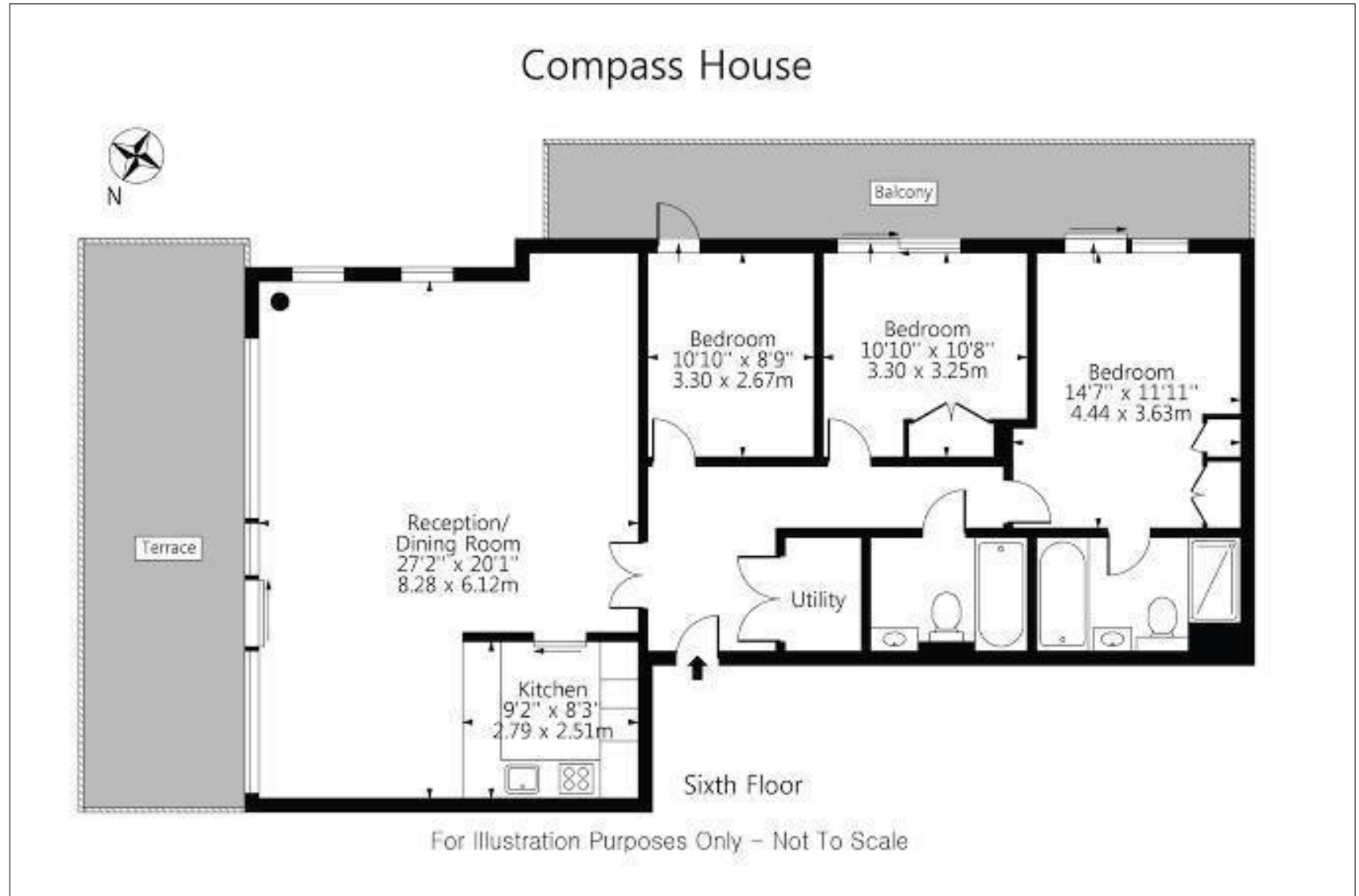
CLUTTONS



An immaculate Three Double Bedroom Apartment in Chelsea Creek.

An opportunity to acquire an outstanding lateral apartment set within an impressive purpose built development . The property is situated on the sixth floor of a highly desirable complex in the very heart of Chelsea Harbour and has been finished to an exceptional level throughout. Comprising of the reception & dining room, separate kitchen with all modern appliances, the principle bedroom suite and two further double bedrooms all with direct access onto one of the flats two balconies and a separate utility room. The accommodation further benefits from the buildings porter, lift, allocated secure underground parking space and state of the art swimming pool gym and spa facilities.

Compass House is a newly built luxury scheme located at the very centre of Chelsea Harbour South West London, Less than 0.3 miles away from the landmark River Thames. The various first class shops, bars and amenities of Kings & New Kings Road are just 0.5 miles away. Imperial Wharf Overground and Tube is literally next to the development just 0.1 miles away.



Approximate gross internal area:
1,227 sq ft (114 sq m)
EPC rating: C | Ref: TOW210117



For further details contact

Scott Joseph
020 7584 1771
scott.joseph@cluttons.com

This is made from FSC certified paper, part of our commitment to use more sustainable materials. FSC, protecting the world's forests for the future. Please recycle.



Cluttons
73 Sloane Ave
London
SW3 3DH
cluttons.com

Cluttons LLP for itself and as agent for the vendor or lessor (as appropriate) gives notice that: 1. These particulars are only a general outline for the guidance of intending purchasers or lessees and do not constitute in whole or in part an offer or a Contract. 2. Reasonable endeavours have been made to ensure that the information given in these particulars is materially correct but any intending purchaser or lessee should satisfy themselves by inspection, searches, enquiries and survey as to the correctness of each statement. 3. All statements in these particulars are made without responsibility on the part of Cluttons LLP or the vendor or lessor. 4. No statement in these particulars is to be relied upon as a statement or representation of fact. 5. Neither Cluttons LLP nor anyone in its employment or acting on its behalf has authority to make any representation or warranty in relation to this property. 6. Nothing in these particulars shall be deemed to be a statement that the property is in good repair or condition or otherwise nor that any services or facilities are in good working order. 7. Photographs may show only certain parts and aspects of the property at the time when the photographs were taken and you should rely upon actual inspection. 8. No assumption should be made in respects of parts of the property not shown in photographs. 9. Any areas, measurements or distances are only approximate. 10. Any reference to alterations or use is not intended to be a statement that any necessary planning, building regulation, listed building or any other consent has been obtained. 11. Amounts quoted are exclusive of VAT if applicable.