

## Butlers & Colonial Wharf SE1

Guide Price of £550,000 to £575,000 leasehold

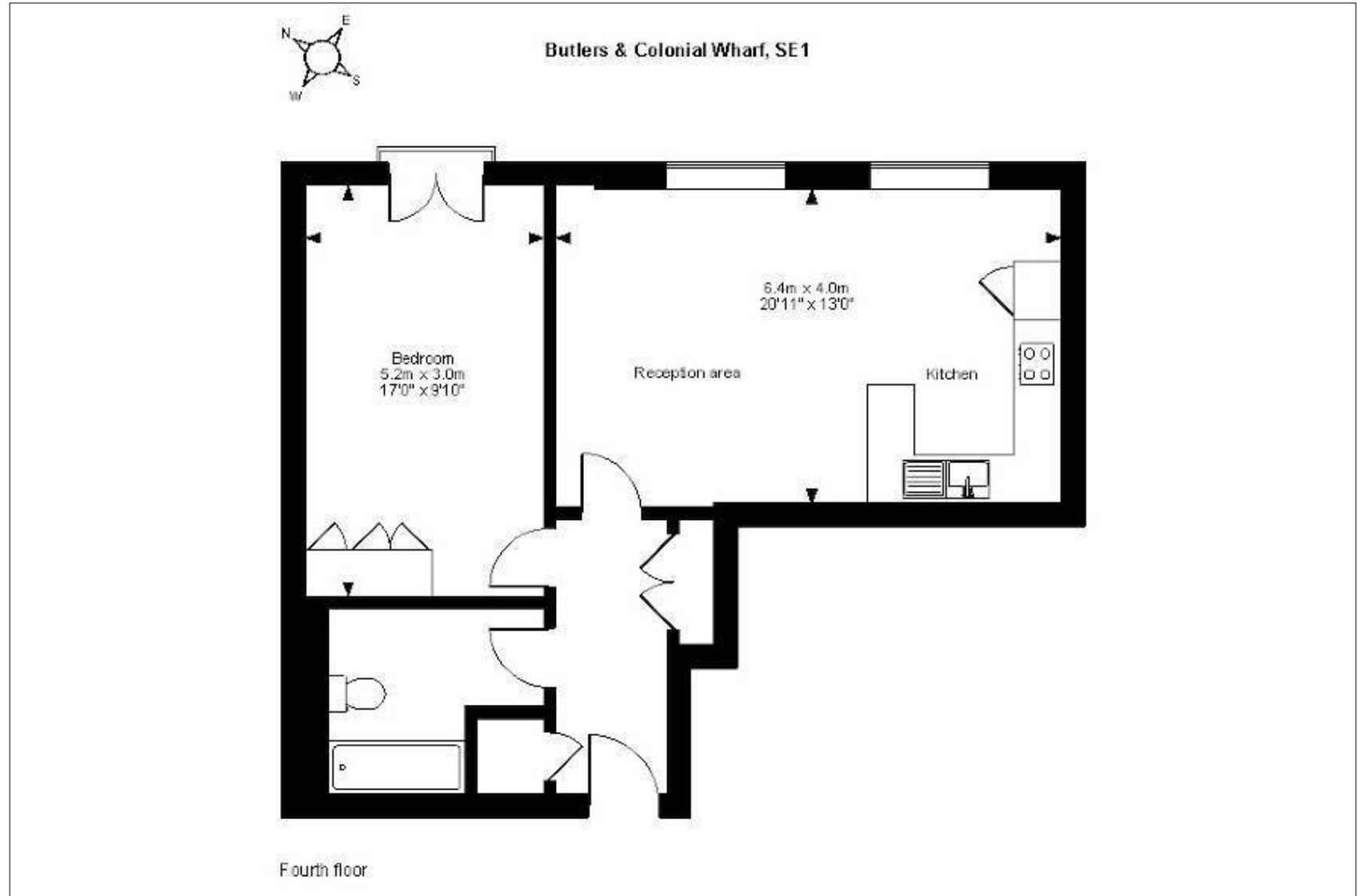
# CLUTTONS



**One bedroom apartment in this prestigious gated Shad Thames development, with one allocated parking space.**

The property is positioned on the fourth floor and is close to 600 square feet. There is a good sized reception room with open plan fully fitted kitchen. The bedroom is a good sized double with fitted wardrobes and large window, arranged as a replica loading bay door. Off of the hallway is a modern bathroom and additional storage cupboard. NO CHAIN.

Butlers and Colonial Wharf is centred around a cobbled courtyard and fountain and comes with a daytime porter and secure parking. The location is excellent for the large variety of shops, river side bars and restaurants in the area and also London Bridge station (Northern line & Jubilee line) is within easy reach.



Approximate gross internal area:  
590 sq ft (54.8 sq m)  
EPC rating: C | Ref: TOW220107



---

For further details contact

George Barker  
020 7407 3669  
george.barker@cluttons.com

Alex Chapalain  
020 7407 3669  
alex.chapalain@cluttons.com

**Cluttons**  
36 Horselydown Lane  
London  
SE1 2LN  
[cluttons.com](http://cluttons.com)

This is made from FSC certified paper, part of our commitment to use more sustainable materials. FSC, protecting the world's forests for the future. Please recycle.



Cluttons LLP for itself and as agent for the vendor or lessor (as appropriate) gives notice that: 1. These particulars are only a general outline for the guidance of intending purchasers or lessees and do not constitute in whole or in part an offer or a Contract. 2. Reasonable endeavours have been made to ensure that the information given in these particulars is materially correct but any intending purchaser or lessee should satisfy themselves by inspection, searches, enquiries and survey as to the correctness of each statement. 3. All statements in these particulars are made without responsibility on the part of Cluttons LLP or the vendor or lessor. 4. No statement in these particulars is to be relied upon as a statement or representation of fact. 5. Neither Cluttons LLP nor anyone in its employment or acting on its behalf has authority to make any representation or warranty in relation to this property. 6. Nothing in these particulars shall be deemed to be a statement that the property is in good repair or condition or otherwise nor that any services or facilities are in good working order. 7. Photographs may show only certain parts and aspects of the property at the time when the photographs were taken and you should rely upon actual inspection. 8. No assumption should be made in respects of parts of the property not shown in photographs. 9. Any areas, measurements or distances are only approximate. 10. Any reference to alterations or use is not intended to be a statement that any necessary planning, building regulation, listed building or any other consent has been obtained. 11. Amounts quoted are exclusive of VAT if applicable.