

**Eluna Apartments E1W**  
£575,000 leasehold

**CLUTTONS**



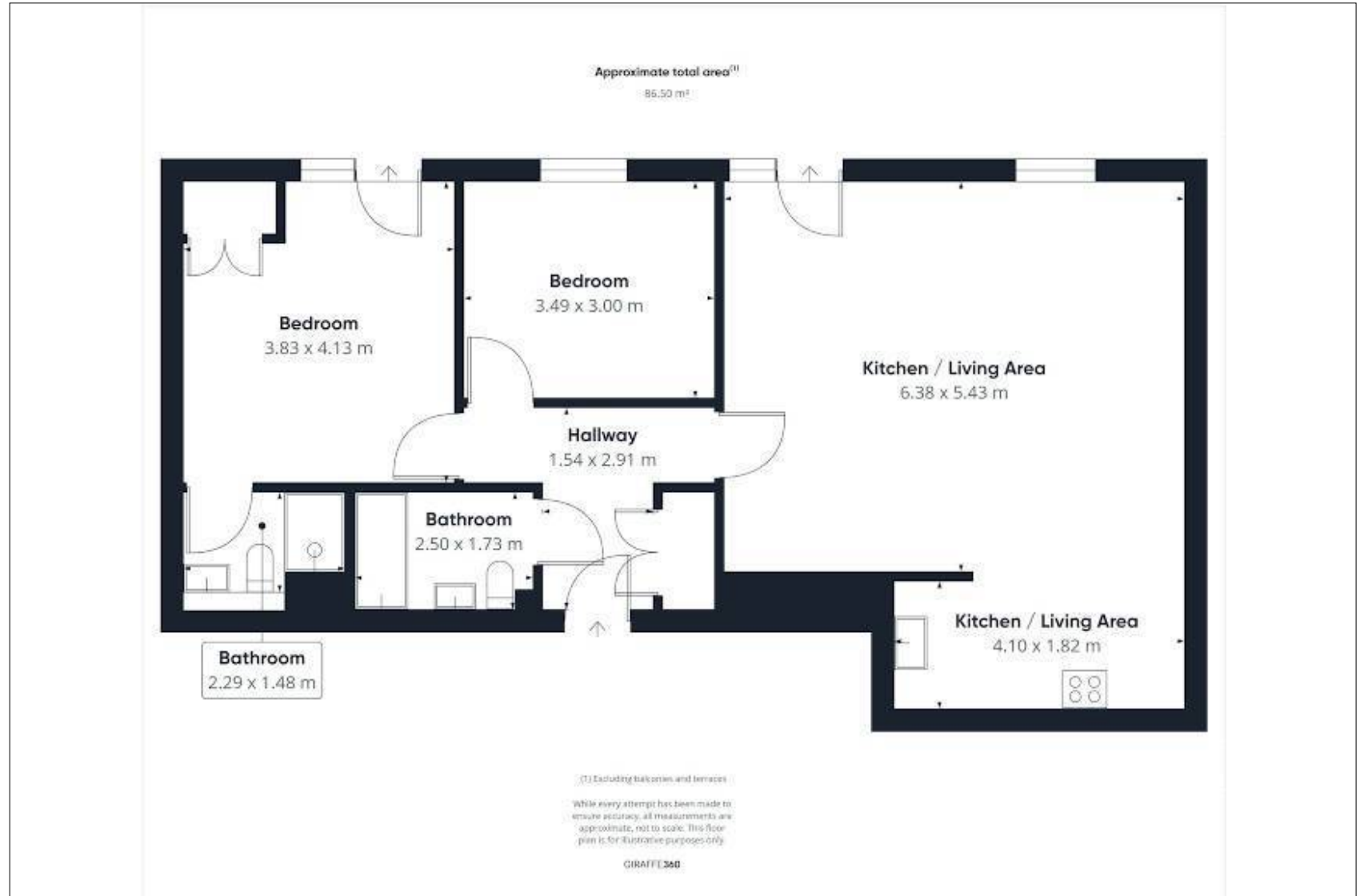
**A beautifully presented two bedroom two bathroom apartment measuring over 930 square feet while benefitting from an allocated parking space.**

Accommodation comprises; a generous reception room offering plenty of space for separate living, dining and working areas while being open plan to the modern kitchen with marble effect work tops and integrated appliances, a sizable principal bedroom with built-in wardrobes and an en suite shower room, a second double bedroom and further family bathroom.

Eluna Apartments is well located for access across central London, just 0.3 miles from Shadwell station (overground and DLR), 0.4 miles from Wapping station (overground) and 0.9 miles from both Tower Hill and Aldgate East stations (underground). Wapping Lane offers an abundance of shops and amenities while St Katharine Docks is just a short walk away and is home to a variety of bars and restaurants.

Leasehold - 125 years from 1 January 2003.

Ground rent £505 per annum.  
Service charge approximately £3,900 per annum.  
Council tax band D.



Approximate gross internal area:  
931 sq ft (86.5 sq m)  
EPC rating: C | Ref: WAP170081



---

For further details contact

Laura Banks  
020 7488 4858  
laura.banks@cluttons.com

Abby Perry  
020 7488 4858  
abby.perry@cluttons.com

**Cluttons**  
3 Wapping High Street  
London  
E1W 1LS  
[cluttons.com](http://cluttons.com)

This is made from FSC certified paper, part of our commitment to use more sustainable materials. FSC, protecting the world's forests for the future. Please recycle.



Cluttons LLP for itself and as agent for the vendor or lessor (as appropriate) gives notice that: 1. These particulars are only a general outline for the guidance of intending purchasers or lessees and do not constitute in whole or in part an offer or a Contract. 2. Reasonable endeavours have been made to ensure that the information given in these particulars is materially correct but any intending purchaser or lessee should satisfy themselves by inspection, searches, enquiries and survey as to the correctness of each statement. 3. All statements in these particulars are made without responsibility on the part of Cluttons LLP or the vendor or lessor. 4. No statement in these particulars is to be relied upon as a statement or representation of fact. 5. Neither Cluttons LLP nor anyone in its employment or acting on its behalf has authority to make any representation or warranty in relation to this property. 6. Nothing in these particulars shall be deemed to be a statement that the property is in good repair or condition or otherwise nor that any services or facilities are in good working order. 7. Photographs may show only certain parts and aspects of the property at the time when the photographs were taken and you should rely upon actual inspection. 8. No assumption should be made in respects of parts of the property not shown in photographs. 9. Any areas, measurements or distances are only approximate. 10. Any reference to alterations or use is not intended to be a statement that any necessary planning, building regulation, listed building or any other consent has been obtained. 11. Amounts quoted are exclusive of VAT if applicable.