







## HENRY MACAULAY AVENUE

KINGSTON UPON THAMES, KT2

**A stunning two double bedroom, two bathroom apartment with private balcony**

- \* **Luxury modern apartment**
- \* **Riverside development**
- \* **Private balcony**
- \* **Two bathrooms**
- \* **Concierge service**
- \* **Central Kingston location**

### THE PROPERTY

A stunning two double bedroom, two bathroom apartment with south facing private balcony located within the award winning Kingston Riverside development on Henry Macaulay Avenue.

Situated on the 2nd floor, the property enjoys the benefit of a large private L shaped balcony as well as access to the communal grounds of the development which overlook the river and Canbury Gardens. Furthermore, a rooftop communal garden can be found on the 6th floor with far reaching views, whilst a dedicated concierge service is available to residents.

The apartment itself has been finished to the most exacting standards and comprises two double bedrooms, both which enjoy built in wardrobes. It also offers two stylish modern bathrooms, one of which is en-suite. An open plan kitchen/reception/dining room has a dual aspect and opens out onto the balcony. The kitchen is provided with a range of integrated appliances.





## THE LOCATION

Kingston Riverside is an iconic, modern development of exquisite apartments completed in 2014 by Redrow London and is nestled directly along the River Thames and just moments from Kingston town centre.

Canbury Gardens is immediately in front whilst the railway station is within just a few minutes walk.

An ideal as a luxury apartment base, investment opportunity or for those simply looking for the highest quality of living.

EPC=B

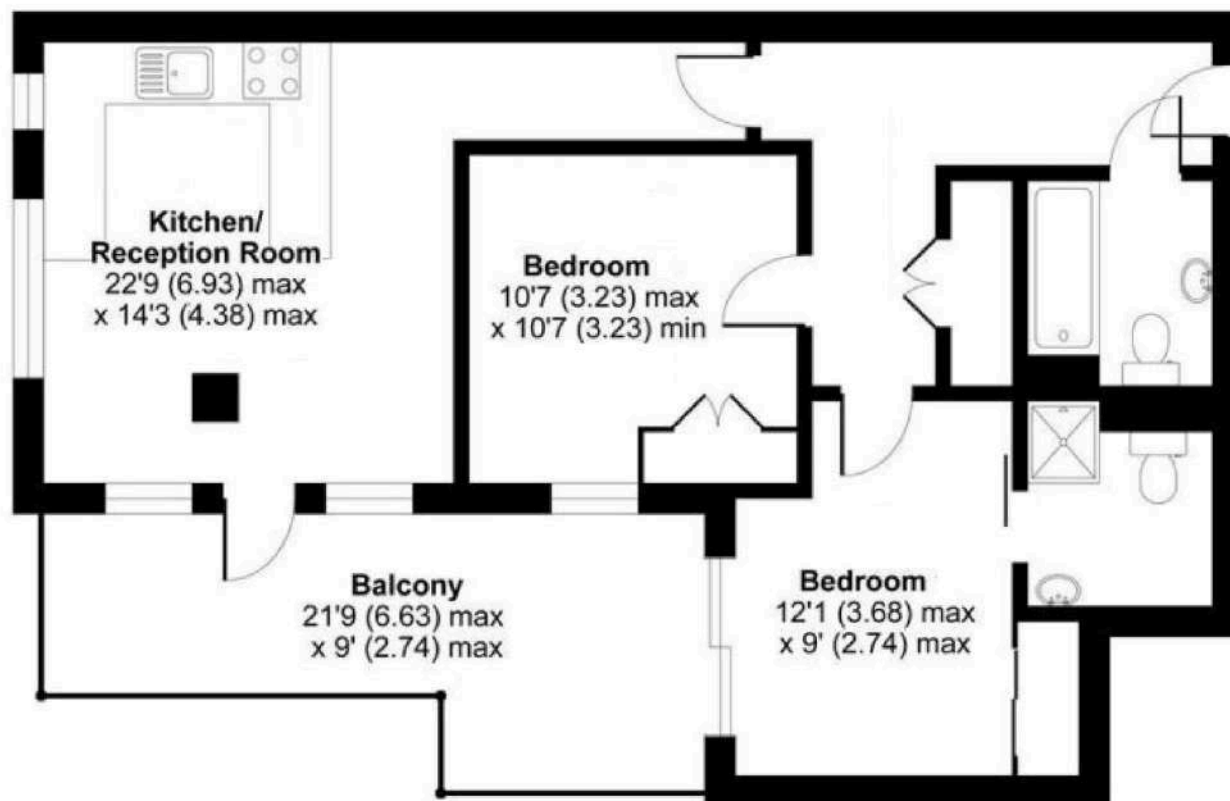






## Kingston Riverside, Kingston upon Thames KT2

Approximate Gross Internal Area | 62 sq m / 668 sq ft:



### SECOND FLOOR

Featherstone Leigh Ltd

Every attempt is made to assure accuracy, however measurements are approximate and for illustrative purposes only. Not to scale. (ID551856)



#### KINGSTON OFFICE

179 Clarence Street  
Kingston Upon Thames  
KT1 1QT

#### sales

020 8549 9449

#### lettings

020 8549 3343

kingston\_sales@featherstoneleigh.co.uk

[featherstoneleigh.co.uk](https://www.featherstoneleigh.co.uk)

**IMPORTANT** Featherstone Leigh would inform prospective purchasers that these sales particulars have been prepared as a general guide only. A detailed survey has not been carried out, nor the services, appliances or fittings tested. Room sizes should not be relied upon for furnishing purposes and are approximate. If floor plans are included, they are for guidance only and illustration purposes only and may not be to scale. If there are any important matters likely to affect your decision to buy, please contact us before viewing the property.