



featherstone
leigh

BOUNDARY CLOSE

KINGSTON UPON THAMES, KT1

- **2 double bedroom apartment**
- **Resident parking**
- **Separate kitchen**
- **Communal garden**
- **No onward chain**
- **Ideal investment**

A well-appointed two double bedroom apartment with separate kitchen and resident parking, offered to the market with no onward chain.

Built in 2007 and located on the top floor of this purpose built development, the property enjoys generous room sizes spanning across 550 sq ft.

The property comprises two double bedrooms, reception/dining room, separate kitchen and bathroom. The reception also benefits from Juliet balcony.

The bright and modern bathroom is tiled from floor to ceiling and includes a white suite with shower over the bathtub. The property is also provided with resident parking. Further benefits of this apartment include, gas central heating, UPVC windows, communal garden.

The apartment would make not only an ideal investment but also perfect for first time buyers looking to take advantage of the size and location of the property.





THE LOCATION

Boundary Close is nestled peacefully in a quiet cul-de-sac positioned ideally for those requiring public transport or for commuters who will take advantage of Norbiton's Zone 5 railway station situated less than a mile from the apartment and offering frequent services to London Waterloo.

TENURE & CHARGES

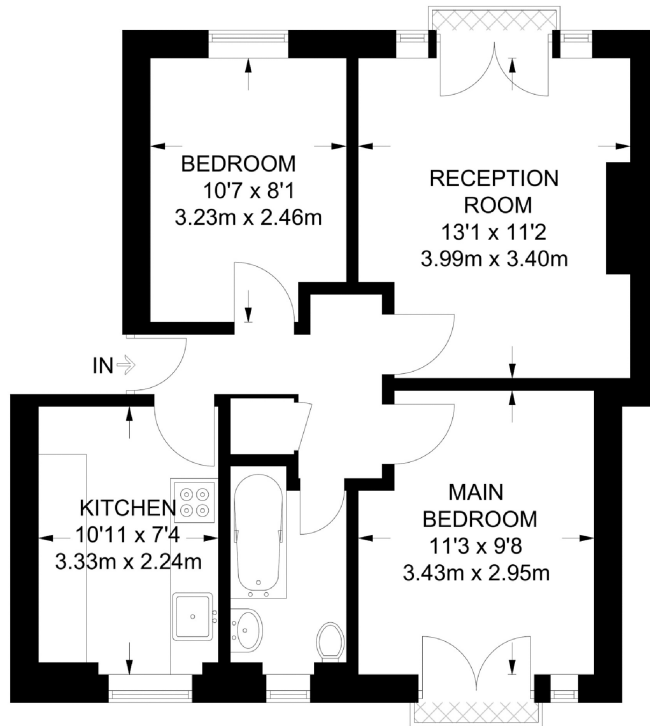
Tenure | Leasehold (125 years from 01.01.2007)
Ground Rent | £200 per annum
Service Charge | TBC
EPC Rating | D
Council Tax Band | C





Boundary Close, Kingston upon Thames KT1

Approximate Gross Internal Area | 51.1 sq m / 550 sq ft



Featherstone Leigh Ltd

Every attempt is made to assure accuracy, however measurements are approximate and for illustrative purposes only. Not to scale. (ID551856)



KINGSTON OFFICE

179 Clarence Street
Kingston Upon Thames
KT1 1QT

sales
020 8549 9449

lettings
020 8549 3343

kingston_sales@featherstoneleigh.co.uk

featherstoneleigh.co.uk

IMPORTANT Featherstone Leigh would inform prospective purchasers that these sales particulars have been prepared as a general guide only. A detailed survey has not been carried out, nor the services, appliances or fittings tested. Room sizes should not be relied upon for furnishing purposes and are approximate. If floor plans are included, they are for guidance only and illustration purposes only and may not be to scale. If there are any important matters likely to affect your decision to buy, please contact us before viewing the property.