



## The Grid, Al Barsha

haus & haus Real Estate Broker | [www.hausandhaus.com](http://www.hausandhaus.com)

Charlie Shetliffe, Senior Consultant | +971 (0) 4 302 5809 | +971 (0) 56 486 6625 | [charlie.s@hausandhaus.com](mailto:charlie.s@hausandhaus.com)

**haus**&haus

# The Grid

Al Barsha

 1  2  690 sq.ft

## Property Description

haus & haus is delighted to offer a selection of 1,2, and 3 bedroom apartments in The Grid Building, Al Barsha 1. The building is situated in close proximity to the Mall of Emirates and has easy access to Sheikh Zayed Road. The building offers great amenities such as gym & sauna, rooftop pool, and shops on the ground floor level.



## Property Features

- 1 month free rent
- Up to 6 cheques accepted
- Chiller Free
- Multiple options available
- Rooftop pool
- Gym
- Close to Mall of Emirates
- Call Charlie to view +971 (0)56 486 6625

AED 42,000 per annum

Available:

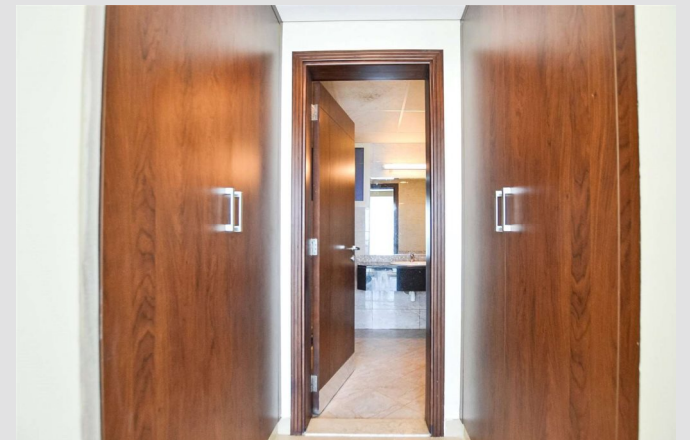
Multiple Options Available Immediately





# The Grid

Al Barsha





For viewing and more information,  
please contact our property specialist:



**Charlie Shetliffe**

Senior Consultant | BRN: 46109

t: +971 (0) 4 302 5809

m: +971 (0) 56 486 6625

e: [charlie.s@hausandhaus.com](mailto:charlie.s@hausandhaus.com)

### Disclaimer

Every attempt has been made to ensure accuracy, however these property particulars are approximate and for illustrative purposes only. They have been prepared in good faith and they are not intended to constitute part of an offer of contract. We have not carried out a structural survey and the services, appliances and specific fittings have not been tested. All photographs, measurements, floor plans and distances referred to

are given as a guide only and should not be relied upon for the purchase of any fixture or fittings. Lease details, service charges and ground rent (where applicable) are given as a guide only and should be checked prior to agreeing a sale. The copyright of details, photographs and floor plans remain exclusive to haus & haus Real Estate Broker.