

12 BLACKBERRY LANE, FOUR MARKS,
ALTON, HAMPSHIRE, GU34 5BN
4 BEDS | 2 RECEPTIONS

£625,000 (Asking Price)

- Detached Bungalow
- Four Double Bedrooms
- Kitchen/Diner/Family Room
- Large Garden
- Off Road Parking & Garage
- Master Bedroom With Luxurious En-Suite
- Popular Village Location
- Excellent Transport Links
- New Windows and Doors Throughout



Situated in one of the area's most favoured tree lined roads is this detached four bed bungalow, offering spacious and versatile living accommodation including a lovely open plan kitchen/dining room and an en-suite master bedroom.

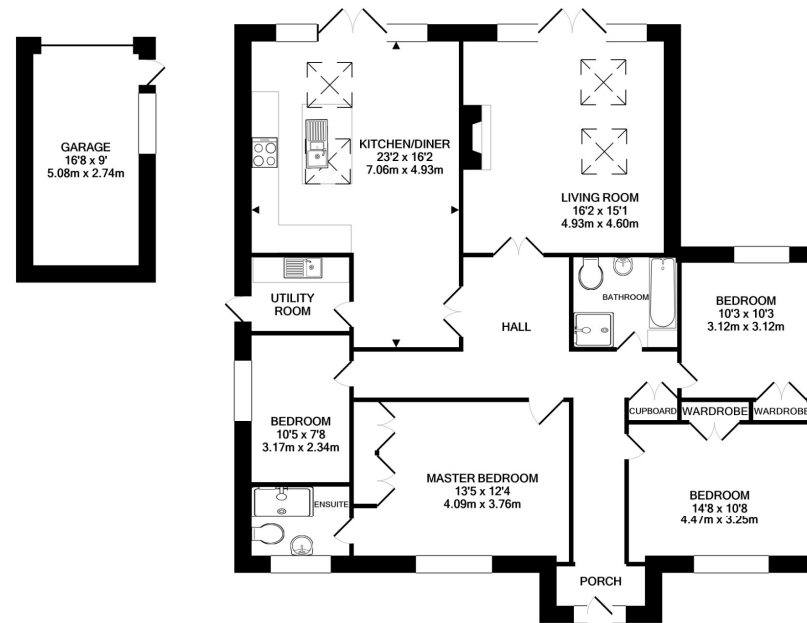
The current owners have made significant improvements to the property including a recently completed large extension which boasts a wonderful open plan hub of the home kitchen/diner/family room with feature central island, together with large sitting room incorporating a minimalist electric fire. Both of these impressive rooms have partially vaulted ceilings creating an airy feel whilst attracting plenty of natural light from the large skylight windows. The kitchen has been fitted with a comprehensive selection of base and eye level cupboards together with an integrated dishwasher, fridge / freezer and Corian style work tops. Double doors allow access to the rear garden from both kitchen and sitting room, creating a perfect entertaining space. There is also a practical utility room with further storage and space for domestic appliances located adjacent to the kitchen.

All rooms are accessed via a large welcoming entrance hall which also provides plenty of space for a study area. There are four double bedrooms, the master bedroom benefits from an en-suite shower room and completing the

To view this property call Homes on
01420 593900

www.homesathomes.co.uk

Floorplan



TOTAL APPROX. FLOOR AREA 1752 SQ.FT. (162.8 SQ.M.)

Whilst every attempt has been made to ensure the accuracy of the floor plan contained here, measurements of doors, windows, rooms and any other items are approximate and no responsibility is taken for any error, omission, or mis-statement. This plan is for illustrative purposes only and should be used as such by any prospective purchaser. The services, systems and appliances shown have not been tested and no guarantee as to their operability or efficiency can be given.
Made with Metropix ©2020

EPC

PROPERTY MISDESCRIPTIONS ACT 1991: The Agents has not tested any apparatus, equipment, fixtures and fittings, or services, so cannot verify that they are in working order or fit for the purpose. The buyer is advised to obtain verification from his or her Professional Buyer. References to the Tenure of the property are based on information supplied by the Vendor. The agents have not had sight of the title documents. The buyer is advised to obtain verification from their Solicitor. You are advised to check the availability of any property before travelling any distance to view

ESTATE AGENTS
homes