

HARRODS ESTATES  
LUXURY PROPERTY AGENTS

HALF MOON STREET, LONDON W1



TWO BEDROOM GARDEN FLAT IN GREAT MAYFAIR LOCATION, IN NEED OF MODERNISATION  
PRICE ON APPLICATION

*Harrods*

KNIGHTSBRIDGE OFFICE: 82 BROMPTON ROAD LONDON SW3 1ER T: +44 (0) 20 7225 6506

MAYFAIR OFFICE: 61 PARK LANE LONDON W1K 1QF T: +44 (0) 20 7409 9001

KENSINGTON OFFICE: 48-50 KENSINGTON CHURCH STREET LONDON W8 4DG T: +44 (0) 20 3650 4600

HARRODSESTATES.COM

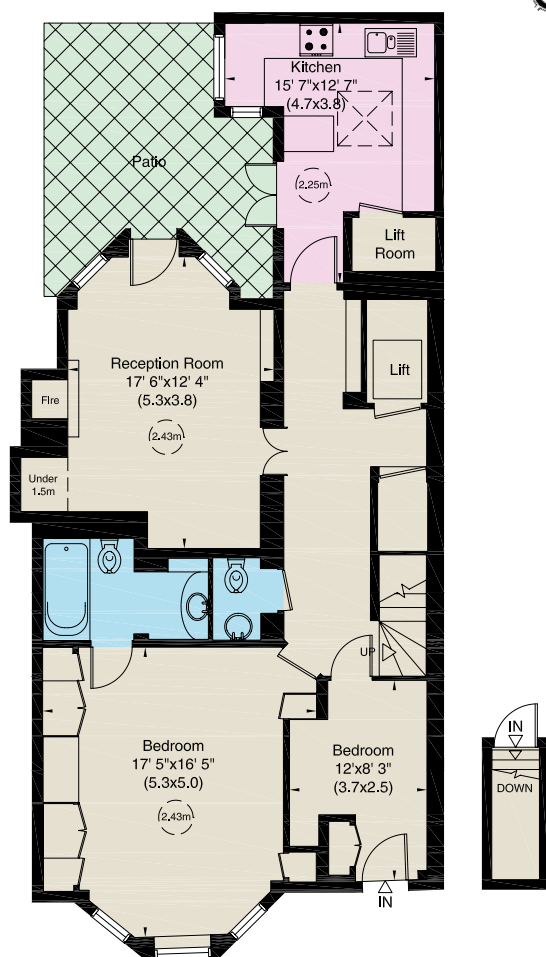
# HALF MOON STREET, LONDON W1



In need of modernisation is this two bedroom apartment which has a delightful, private and surprisingly peaceful paved garden which can be accessed from both the reception and separate kitchen. Positioned on the lower ground floor of this period building, Half Moon Street is an excellent location linking Piccadilly to Mayfair convenient for Green Park and transport links and the underground.

## APPROXIMATE GROSS INTERNAL AREA

1,045sq ft / 97sq m Including Under 1.5m



Lower Ground Floor

Ground Floor

## TERMS

(as advised by our clients)

## TENURE

Leasehold, approximately 116 years remaining

## SERVICE CHARGE

Approximately £2,568.88 per annum

## GROUND RENT

£100 per annum

## LOCAL AUTHORITY

City of Westminster

## COUNCIL TAX

Band X

## PRICE

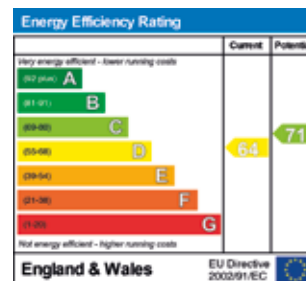
On application

## BROCHURE

For E-brochure and more photographs please visit [www.harrodsestates.com](http://www.harrodsestates.com)

## VIEWING

By appointment with Harrods Estates on 020 7409 9001




**IMPORTANT NOTICE:** These particulars are for guidance only. Whilst every effort has been made to ensure the accuracy of the descriptions, plans and measurements, these are not guaranteed and they do not form part of any contract. We have not tested any of the services, equipment or fittings. Interested parties should satisfy themselves as to the conditions of any such items considered material to their prospective purchase and may wish to consult an independent advisor. It should not be assumed that any of the articles depicted in these particulars are included in the purchase price. 363101

