



HUDSONS

www.hudsonsproperty.com

NEO BANKSIDE, SE1

£3,500,000



Positioned on the 10th floor of the sought after Neo Bankside development, this 3 bedroom apartment offers stunning views North across the river to include St. Paul's Cathedral, Tate Modern, the River Thames, Millennium Bridge and The City of London. Benefiting from 3 Double Bedrooms, 3 Bathrooms, Open Plan Kitchen and Living area all finished to a high specification. Designed by Rogers Stirk Harbour + Partners these apartments are the ultimate in modern living.

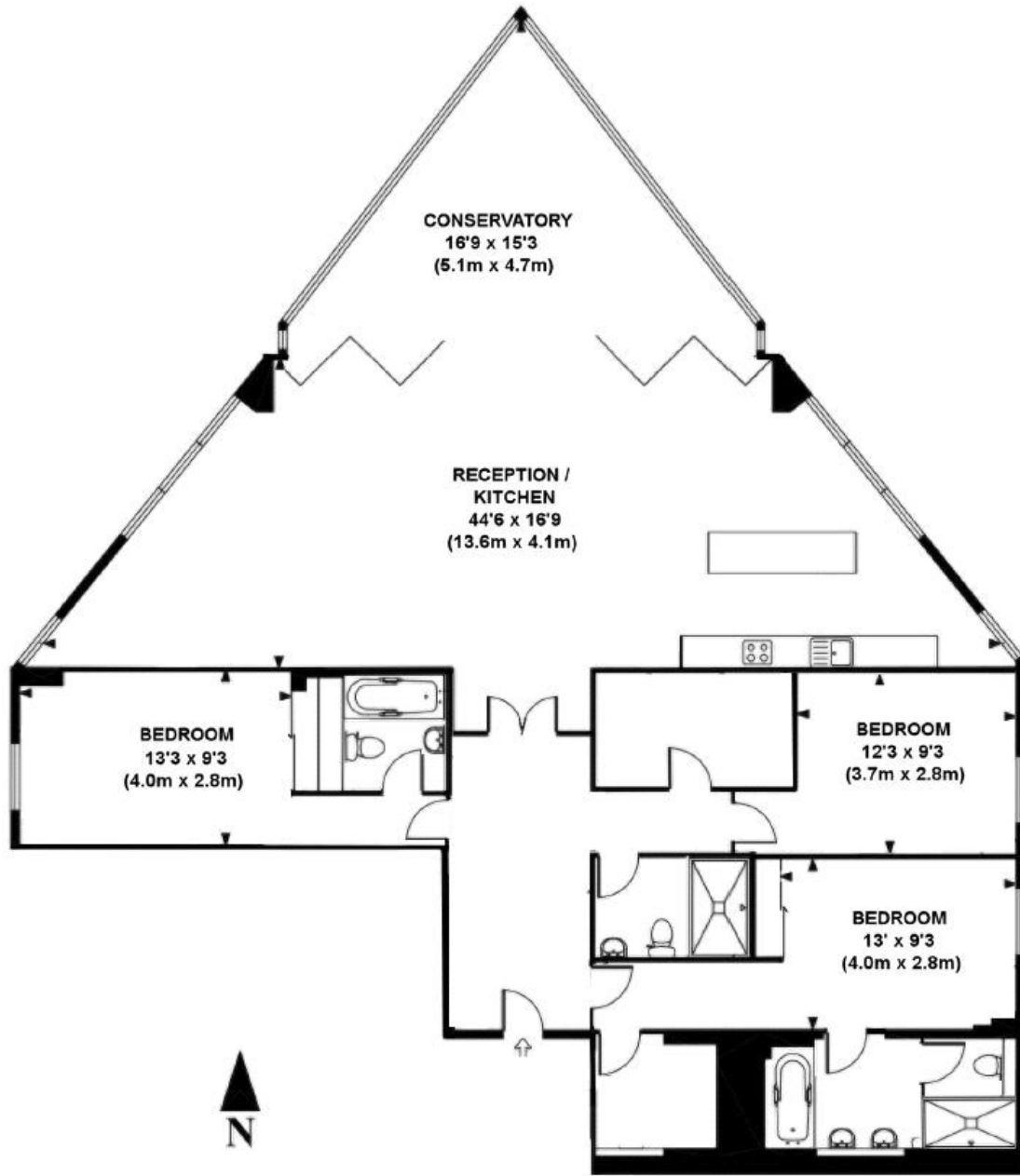
- 10th floor luxury apartment
- 3 bedrooms, 3 bathrooms
- Sought after Neo Bankside development
- 24 hour security
- Residents gym
- Private landscaped gardens



HUDSONS

www.hudsonsproperty.com

NEO BANKSIDE, SE1



APPROX. GROSS INTERNAL FLOOR AREA 2040 SQ FT / 190 SQ M

All viewings by appointment through our **Charlotte Street office:**

T 020 7323 2277

E info@hudsonsproperty.com

24 Charlotte Street
London
W1T 2ND

hudsonsproperty.com

Hudsons Property give notice to anyone reading these particulars that: these particulars do not constitute part of an offer or contract; (ii) these particulars and any pictures or plans represent the opinion of the author and are given in good faith for guidance only and must not be construed as statements of fact; (iii) nothing in the particulars shall be deemed a statement that the property is in good condition otherwise; we have not carried out a structural survey of the property and have not tested the services, appliances or specified fittings.

Full Energy Performance Certificate available on request.

Energy Efficiency Rating		Current	Potential
Very energy efficient - lower running costs			
(92-)	A		
(81-91)	B	82	83
(69-80)	C		
(55-68)	D		
(39-54)	E		
(21-38)	F		
(1-20)	G		
Not energy efficient - higher running costs			
England, Scotland & Wales		EU Directive 2002/91/EC	