

# Eagle Place

LONDON, SW7 3RG

Kaye & Carey





Charming and spacious mews house with garage and off-street parking, in excellent condition, being neutral throughout.

FOUR DOUBLE BEDROOMS (TWO EN SUITE), BATHROOM, GUEST LOO, RECEPTION ROOM, KITCHEN, GARAGE, EPC - D

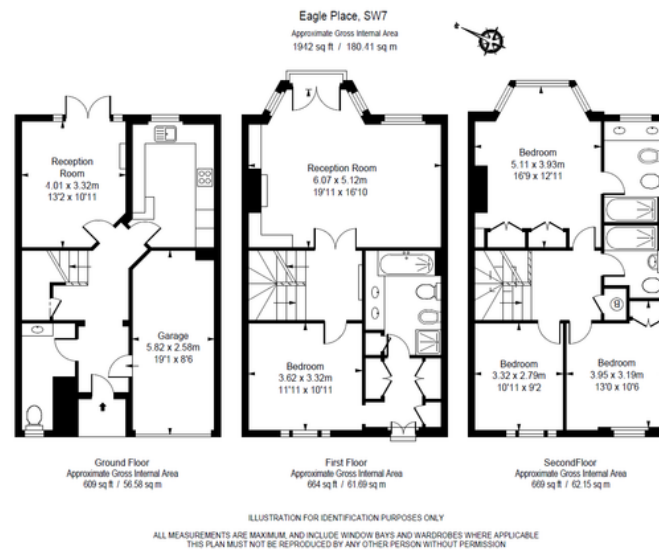
**Price: £1,450 per week**

**Long Let, Unfurnished**

**Royal Borough of Kensington and Chelsea**

After an offer is accepted by the Landlord, which is subject to contract and acceptable references, the following charges and fees will be payable:

- Preparation of Tenancy Agreement - £180 inc VAT
- Reference per Tenant/Guarantor - £21.60 inc VAT
- A deposit, usually 6 weeks of agreed rent (8 weeks of agreed rent for a pet deposit)
- Inventory charge, payable by the Tenant at the end of the Tenancy and is dependent on the size and condition of the property (£95-£400 inc VAT)
- Professional clean, payable by the Tenant at the end of the Tenancy and is dependent on the size and condition of the property (£150-£500 inc VAT)
- Renewal Fee per Tenant - £90 inc VAT



Energy Efficiency Rating		Current	Potential
Very energy efficient - lower running costs			
(92-)	A		
(81-91)	B		
(69-80)	C		
(55-68)	D	62	71
(39-54)	E		
(21-38)	F		
(1-20)	G		
Not energy efficient - higher running costs			
England, Scotland & Wales		EU Directive 2002/91/EC	

# Kaye & Carey

020 7590 0060

4 Yeoman's Row, Brompton Road, London SW3 2AH

lettings@kayeandcarey.co.uk

[www.kayeandcarey.co.uk](http://www.kayeandcarey.co.uk)

**Specialists in garden square property**

Kaye & Carey, their clients and any joint agents give notice that: a) They have no authority to make or give any representations or warranties in relation to the property. b) These sales particulars do not constitute an offer or contract. c) Any areas, measurements or distances are approximate. d) The text, photographs and plans are not necessarily comprehensive and are for guidance only. e) It should not be assumed that the property has all necessary planning, building regulations or other consents. f) Kaye & Carey have not tested any services or appliances. g) Prospective purchasers must satisfy themselves by inspection or otherwise to the correctness of the information given. 270907. Brochure by the Capital Group 020 8671 5448