

Ennismore Gardens Mews

KNIGHTSBRIDGE, SW7 1HX

Kaye & Carey





A beautifully designed two/three bedroom home of 2,324 sq. ft. quietly located in one of the best cobbled Mews in Knightsbridge. Rare features include a private lift, gym, sauna and air conditioning throughout.

ACCOMMODATION AND AMENITIES:

3 BEDROOMS, 3 BATHROOMS, RECEPTION ROOM, KITCHEN, LIFT, GYM, SAUNA

Price: £3,250 per week

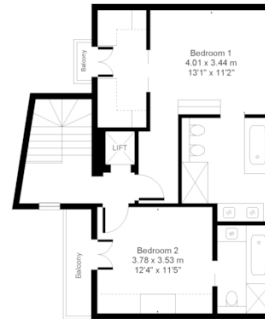
Long Let, Furnished

After an offer is accepted by the Landlord, which is subject to contract and acceptable references, the following charges and fees will be payable:

- A deposit, usually 5 weeks of the agreed rent
- Professional clean, payable by the Tenant at the end of the Tenancy and is dependent on the size and condition of the property (£150-£500 inc VAT)

Ennismore Gardens Mews SW7

Approx. Gross Floor Area = 215 sq.meters • 2324 sq.feet



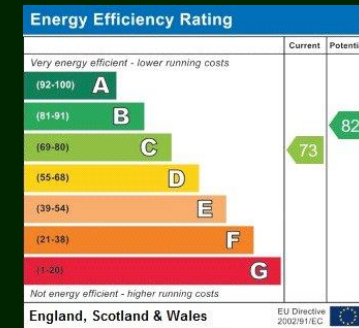
FIRST FLOOR



LOWER GROUND FLOOR



GROUND FLOOR



Kaye & Carey

020 7590 0060

4 Yeoman's Row, Brompton Road, London SW3 2AH

lettings@kayeandcarey.co.uk

www.kayeandcarey.co.uk

Specialists in garden square property

Kaye & Carey, their clients and any joint agents give notice that: a) They have no authority to make or give any representations or warranties in relation to the property. b) These sales particulars do not constitute an offer or contract. c) Any areas, measurements or distances are approximate. d) The text, photographs and plans are not necessarily comprehensive and are for guidance only. e) It should not be assumed that the property has all necessary planning, building regulations or other consents. f) Kaye & Carey have not tested any services or appliances. g) Prospective purchasers must satisfy themselves by inspection or otherwise to the correctness of the information given. 270907. Brochure by the Capital Group 020 8671 5448