



Doudney Court, Bedminster, BS3

Cj Hole are delighted to present this two bedroom apartment, with allocated parking space and no onward chain, in Bedminster.

Asking Price £240,000

EPC Rating C



Energy Efficiency Rating		Current	Potential
Very energy efficient - lower running costs			
(92+)	A		
(81-91)	B		
(69-80)	C		
(55-68)	D		
(39-54)	E		
(21-38)	F		
(1-20)	G		
Not energy efficient - higher running costs			
England, Scotland & Wales		EU Directive 2002/91/EC	



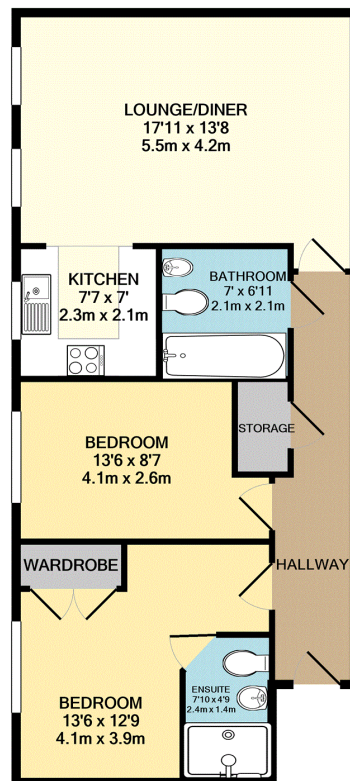
Doudney Court, Bedminster, BS3

- Two Double Bedrooms
- En-suite Shower Room
- Open Plan Kitchen/Living Space
- Family Bathroom
- Large Entrance Hall
- Allocated Parking Space
- No Chain
- 10 Minute Walk From Bristol City Centre

This two bedroom ground floor apartment offers modern living in the heart of the city. Just a ten minute walk from Bedminster train station, Temple Meads Train Station and Bristol City Centre, this apartment is ideally located.

This property features a light and airy open plan kitchen/living space, a double master bedroom with fitted wardrobes and en-suite shower room, a second double bedroom, large entrance hall, storage cupboard, family bathroom and a secure allocated parking space which guarantees you will always have somewhere to park.

Located at the gateway to Bedminster; local amenities such as shops, bars, restaurants and excellent local transport are nearby. The apartment is ideal for first time buyers and young families. This property is welcomed to the market with no onward chain.



CJ Hole Southville
0117 9634373

e: southville@cjhole.co.uk w: www.cjhole.co.uk
 268 North Street, Southville, Bristol, BS3 1JA

TOTAL APPROX. FLOOR AREA 705 SQ.FT. (65.5 SQ.M.)
Made with Metropix ©2020



Agents Note: Whilst every care has been taken to prepare these sales particulars, they are for guidance purposes only. All measurements are approximate are for general guidance purposes only and whilst every care has been taken to ensure their accuracy, they should not be relied upon and potential buyers are advised to recheck the measurements.