



Church Street, Theale, RG7



6



0



4



To be confirmed

Guide Price: £450,000

Freehold

Church Street, Theale, RG7

Guide Price: £450,000

- Development / Conversion potential
- Substantial detached property
- 4 reception rooms
- 6 Bedrooms
- Desirable village location
- Off Road parking

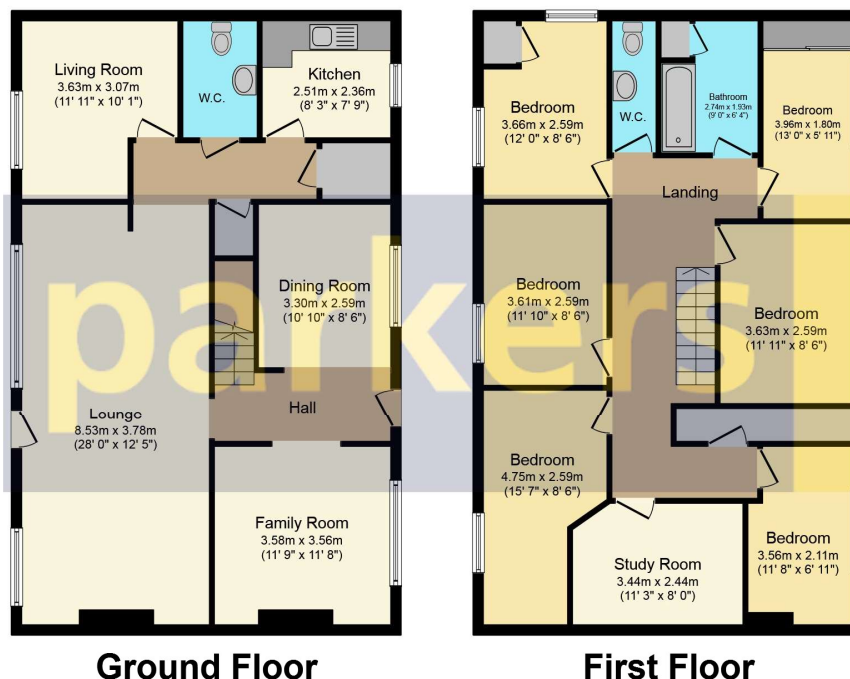
PARKERS – A truly unique opportunity exists to acquire a property, full of character, that has potential as either a development opportunity or in the creation of a substantial family home.

Currently the property is classified as commercial building but it is anticipated that it can be changed back to residential use very easily. As such residential mortgages will not be able to be used for purchasing this property.

The property is well placed to take advantage of all the village has to offer, all amenities – bustling high street, mainline station serving London Paddington, doctors surgery and outstanding primary school are the shortest of walks whilst Junction 12 of the M4 is a 2 minute drive.

Currently the property has 4 reception rooms on the ground floor and 6 bedrooms upstairs although.

The property has off road parking to the rear and represents a unique opportunity to acquire a rarely available 'project' property in this desirable village.



Total floor area 182.0 sq. m. (1,959 sq. ft.) approx

This Floor Plan is for illustration purposes only and may not be representative of the property. The position and size of doors, windows and other features are approximate. Unauthorized reproduction prohibited. © PropertyBOX

0118 9303133

theale@parkersproperties.co.uk
www.parkersproperties.co.uk

Parkers Theale

16-18 High Street, Theale, Reading, RG7
5AN

parkers

Agents Note: Whilst every care has been taken to prepare these sales particulars, they are for guidance purposes only. All measurements are approximate and are for general guidance purposes only and whilst every care has been taken to ensure their accuracy, they should not be relied upon and potential buyers are advised to recheck the measurements.

