



VISTA

# The Exe

4 bedroom home (plots 10, 11, 12 & 17)



STRONGVOX  
HOMES



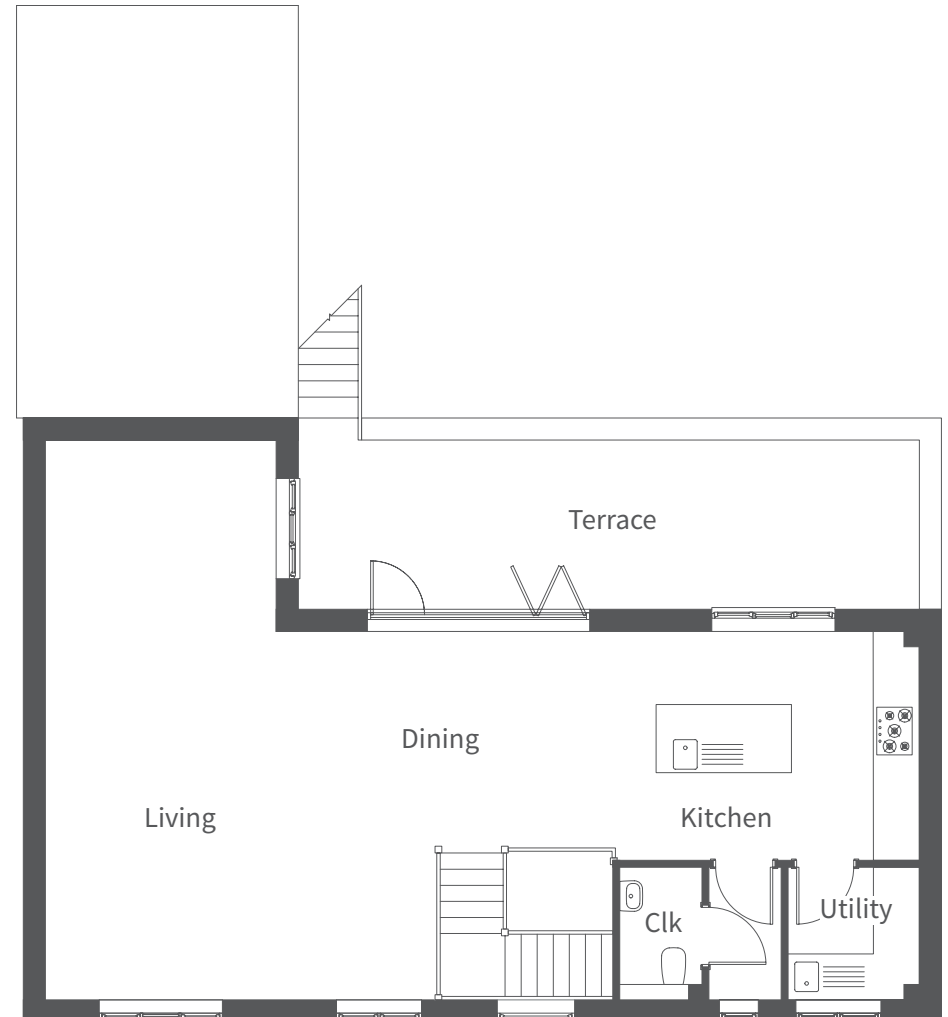
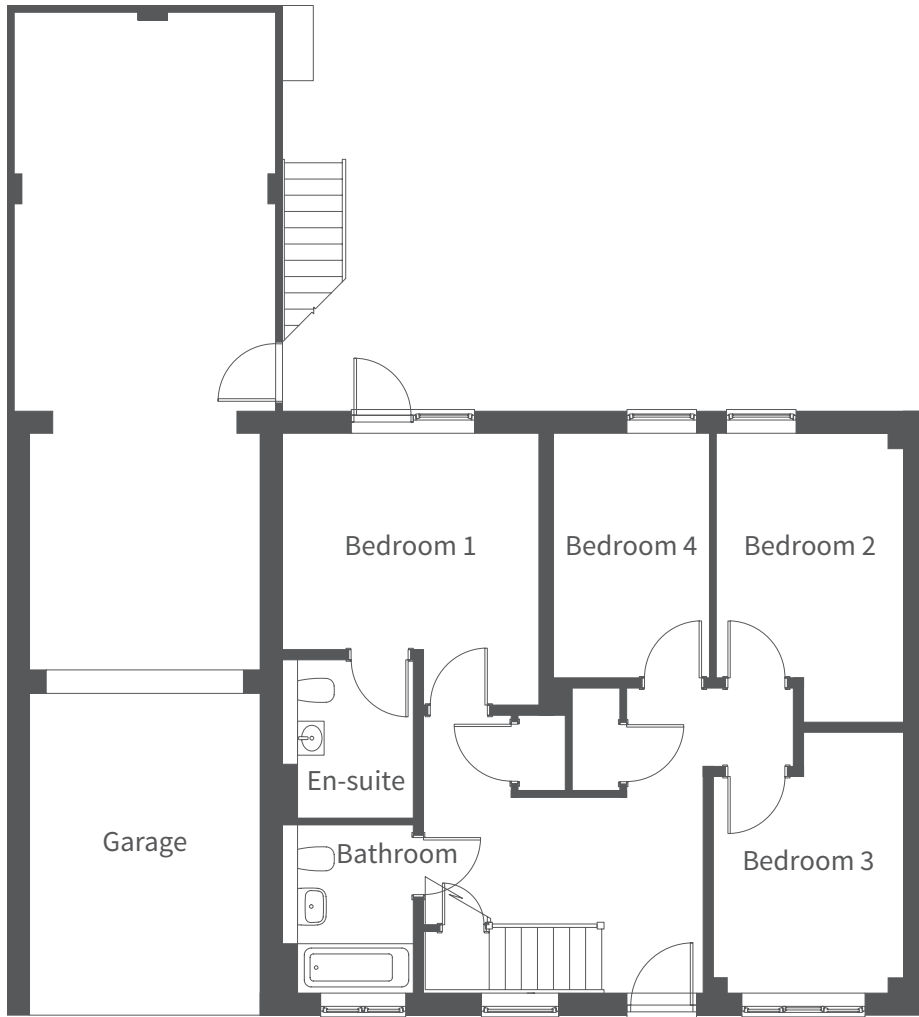
The Exe is substantial 4 bedroom detached home with garage. The living accommodation is on the first floor to maximise the impact of the views of the surrounding area. The front door opens into a spacious hall which gives access to the bathroom and all bedrooms, including the master with en-suite facilities, which also has direct access to the rear garden. On the first floor there is a stunning open plan living area, with separate cloakroom and utility room. Bi-fold doors lead to the large terrace. The kitchen area is generously fitted and comes with a central island unit.



VISTA

# The Exe

4 bedroom home (plots 10, 11, 12 & 17)



Ground Floor

First Floor

Ground Floor	Millimetres	Feet / inches
Bedroom 1	3970 x 3720	13' 0" x 12' 2"
En-suite	2320 x 1900	7' 7" x 6' 3"
Bedroom 2	4220 x 2720	13' 10" x 8' 11"
Bedroom 3	3800 x 2760	12' 6" x 9' 1"
Bedroom 4	3570 x 2260	11' 9" x 7' 5"
Bathroom	2440 x 1900	8' 0" x 6' 3"

Please note: other floor plans and elevations for each property are available. As each house is built individually, maximum dimensions shown may vary +/- 50mm and the internal finishes may not always be the same. External finishes, materials, landscaping, positions and colours of windows and garages (where applicable) may also vary. Properties can also be constructed as mirror images of that shown. Please ask if you require further details or clarification.

First Floor	Millimetres	Feet / inches
Living	8170 x 3340	26' 10" x 10' 11"
Kitchen / Dining	9450 x 3340	31' 0" x 10' 11"
Utility	1920 x 1920	6' 4" x 6' 4"
Terrace	9020 x 2390	29' 7" x 7' 10"