




Park Lane, Hyde Park, London, W1K

Asking Price -£1,595,995
Leasehold

 1  1

Charming one-bedroom apartment nestled in the heart of Mayfair, situated on the prestigious Park Lane. Boasting a generous 687 square feet of living space, this meticulously maintained residence offers a perfect blend of comfort and sophistication.

This property comprises:

- Council Tax Band: G
- Kitchen
- Double Reception Room
- Bright Bedroom
- Bathroom

55 Park Lane provides residents with 24-hour concierge service and security as well as the option (at additional cost) for maid service, laundry service and valet underground parking. Park Lane Place is conveniently located for world class shopping and entertainment facilities of the West End, including Oxford Street, Bond Street and the upmarket boutiques and restaurants of Mayfair.

The location benefits from excellent transport links; including Hyde Park Corner tube station (Piccadilly line) and Marble Arch tube station (Central Line).

Sales
T / +44 (0)20 7486 5655
F / +44 (0)20 7486 6770
E / sales@manors.co.uk

Lettings
T / +44 (0)20 7486 5982
F / +44 (0)20 7486 6770
E / lettings@manors.co.uk

Manors
1 Baker Street
Portman Square
London, W1U 8ED

Park Lane, Hyde Park, London, W1K



Asking Price -£1,595,995



Energy Efficiency Rating

	Current	Potential
Very energy efficient - lower running costs		
(92+) A		
(81-91) B		
(69-80) C	76	81
(55-68) D		
(39-54) E		
(21-38) F		
(1-20) G		
Not energy efficient - higher running costs		
England, Scotland & Wales	EU Directive 2002/91/EC	

Amenities:

24 Hour Security
24 Hour Concierge and Porter Service
Twice Weekly Maid Services

Tenure:

LEASEHOLD EXPIRES 21/06/2134.

Service Charge:

£11,363.00 Per Annum

Price:

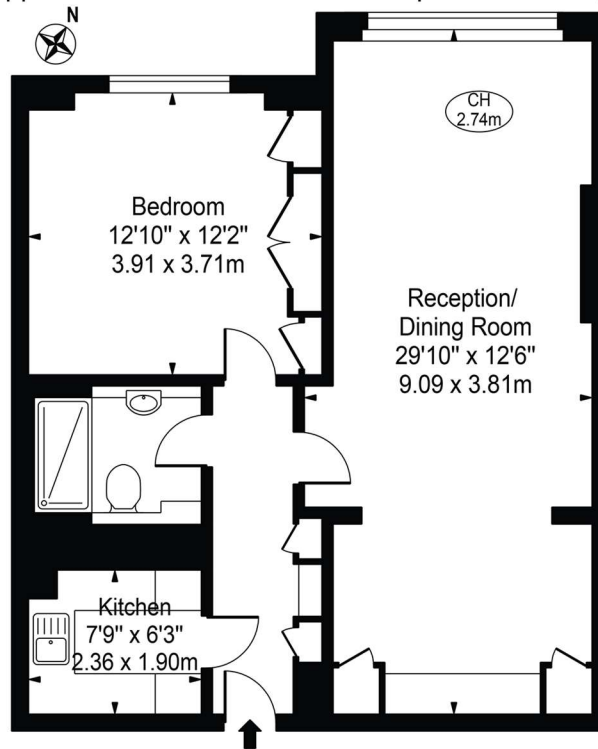
£1,595,995

Approximate Gross Internal Area
63.8 sq m / 687 sq ft

Hyde Park

Park Lane, Hyde Park, London, W1K

Park Lane Approx. Gross Internal Area 687 Sq Ft - 63.82 Sq M



First Floor
For Illustration Purposes Only - Not To Scale

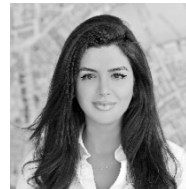
This floor plan should be used as a general outline for guidance only and does not constitute in whole or in part an offer or contract.
Any intending purchaser or lessee should satisfy themselves by inspection, searches, enquiries and full survey as to the correctness of each statement.
Any areas, measurements or distances quoted are approximate and should not be used to value a property or be the basis of any sale or let.

The Manors Sales Team



Jean-Charles Allegri
Sales Manager

dd: 0207 467 4737
m: 07425 566 645
e: jean-charles@manors.co.uk



Dana Awad
Sales Negotiator

dd: 0207 467 4735
m: 07827 658 003
e: dana@manors.co.uk

In accordance with the Consumer Protection from Unfair Trading Regulations 2008 (CPRs) and the Business Protection from Misleading Markets Regulations 2008 (BPRs) Manors have prepared these property particulars as a general guide to a broad description of the property. Manors as agents for the vendor or lessor and for themselves give notice that (a) these particulars are not intended to constitute part of an offer or contract (b) have not carried out a structural survey and the services, appliances and fittings have not been tested (c) all measurements, photographs, distances and floor plans referred to are given as a guide only and should not be relied upon for the purchase of fixtures and fittings (d) tenure details, service charges and ground rent (where applicable) are given as a guide only and should be checked and confirmed by your solicitor prior to exchange of contracts (e) neither the vendor nor any person in the employ of Manors has any authority to make or give any representation or warranty whatsoever in respect of the property.