

Holloway Road

Holloway, N19



2
BEDROOMS



OPEN-PLAN
LIVING



FITTED
KITCHEN



RESIDENT
PARKING



TRANSPORT
LINKS



LEASEHOLD



A split level maisonette on the top two floors above shops on Holloway Road. The property is 805 SQ. FT. (74.7 SQ. M.) and comprises of two bedrooms, two bathrooms and open-plan living.



Martyn Gerrard is the trading name for the North London Network Ltd. Registered in England. No. 2441809. Registered Office: Martyn Gerrard House, 197 Ballards Lane, London N3 1LP

Directors: S.E. Gerrard FNAEA (Hon) PPNAEA MARLA, D.H. Smith FNAEA MARLA, W.A. Price MNAEA, G. Tsuman MARLA **Associate Director:** P. Van Halle MARLA

BARNET • CROUCH END • EAST FINCHLEY • FINCHLEY CENTRAL • NORTH FINCHLEY • KENTISH TOWN • MILL HILL • MUSWELL HILL • SOUTHGATE • WHETSTONE

Holloway Road, Holloway, N19

- En suite shower
- Split level
- Close to Archway station
- 805 SQ. FT. (74.7 SQ. M.)
- Close to parks
- No upper chain

THE OWNERS LOVE

"The bright, airy and comfortable maisonette"

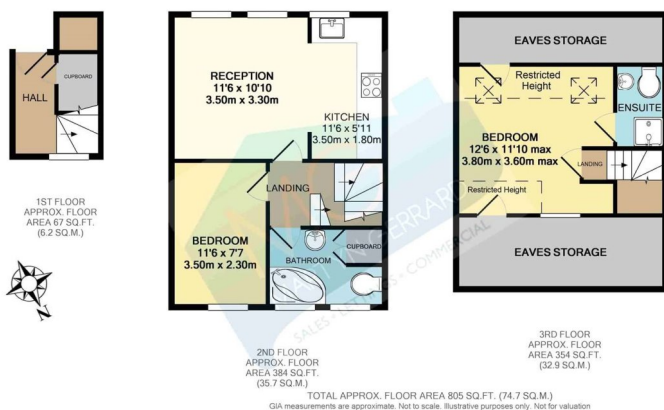
"Being one minute walk to Archway tube station"


"The location is perfect as there are loads of shops, restaurants and even an Odeon cinema close by"

WE'VE NOTICED

The property is ideal for investors.

Close to Waterlow and Whittington Park.



Energy Efficiency Rating		Current	Potential
Very energy efficient - lower running costs			
(92+)	A		
(81-91)	B		
(69-80)	C	77	79
(55-68)	D		
(39-54)	E		
(21-38)	F		
(1-20)	G		
Not energy efficient - higher running costs			
England, Scotland & Wales		EU Directive 2002/91/EC	

A copy of the full EPC is available on request.

£395,000

Leasehold