



mustard  
your hotspot for homes

### At a glance

- Two double bedrooms
- Open plan living
- Allocated parking space
- Gas central heating
- Solar Panels
- Long lease



## Islay Court

Bletchley, MK3 5QW

**Price**  
**£210,000**

## IN DETAIL

Offered for sale in the sought after location of Newton Leys is this well presented two double bedroom apartment. The accommodation consists of entrance hall, open plan lounge kitchen diner, two double bedrooms and family bathroom. The property also benefits from having solar panels and off road parking.



### Living Accommodation

The accommodation comprises of open plan living, with the lounge offering laminate flooring, TV Point, radiator and double glazed window to rear aspect. The kitchen consists of a range of base and eye level units, built in appliances including fridge freezer and dishwasher, integrated oven with gas hob and extractor over, single sink with mixer tap and drainer unit, tiled splashback areas, laminate

flooring and double glazed window to side aspect. There is also a storage cupboard which is currently the home to a washing machine.

### Bedroom One

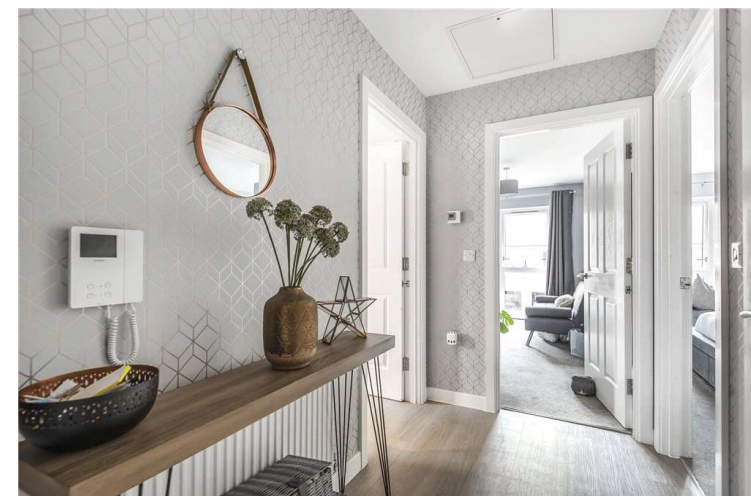
The master bedroom is a good size double bedroom and offers carpeted flooring, radiator and double glazed window to rear aspect.

### Bedroom Two

The second bedroom is also a double bedroom and comprises of carpeted flooring, radiator and double glazed window to rear aspect.

### Bathroom

The bathroom offers a three piece suite including a panel bath with shower over, low level wc and hand wash basin. There is also tiled splashback areas and a heated towel rail.





**Location**

Newton Leys is a maturing new development that has a wealth of character and history dating back to the Iron age. The area is located in between the historic home of the codebreakers 'Bletchley' and the picturesque village of Newton Longville. Newton Leys has a great deal of appeal but one key selling point for many a purchaser in the area is the Willow lake which is stunning. Newton Leys is ideal

for commuters as it is located next to the A5 and A4146 which provides easy access to Leighton Buzzard, Central Milton Keynes and the M1 motorway. Bletchley train station is also less than 2 miles away and provides main line train access into London, The Midlands and The North of England.



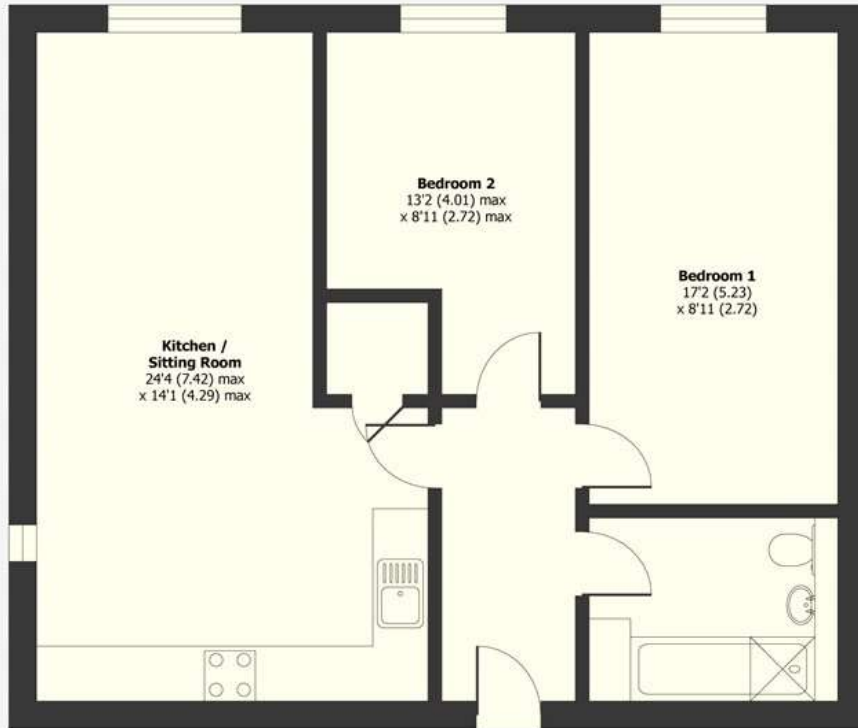
**Additional Info**

Mains Water, Electricity  
 Local Authority:  
 Milton Keynes Council  
 Council tax band B

Energy Efficiency Rating		Current	Potential
Very energy efficient - lower running costs			
(92+)	A		
(81-91)	B	87	87
(69-80)	C		
(55-68)	D		
(39-54)	E		
(21-38)	F		
(1-20)	G		
Not energy efficient - higher running costs			
England, Scotland & Wales		EU Directive 2002/91/EC	

# Islay Court, Newton Leys, Bletchley, Milton Keynes, MK3

Approximate Area = 705 sq ft / 65.4 sq m  
For identification only - Not to scale



First Floor



Floor plan produced in accordance with RICS Property Measurement Standards incorporating International Property Measurement Standards (IPMS2 Residential). © richcom 2021. Produced for Mustard. REF: 742907



# mustard

01908 859000 | Gloucester House, 399 Silbury Boulevard, Milton Keynes, MK9 2AH



Mustard has not tested any apparatus, equipment, fittings or services and so cannot verify they are in working order. The buyer is advised to obtain verification from their solicitor or surveyor.

@hotspotforhomes

@MustardHomes

[mustardhomes.co.uk](https://www.mustardhomes.co.uk)