



£490,000
Share of Freehold

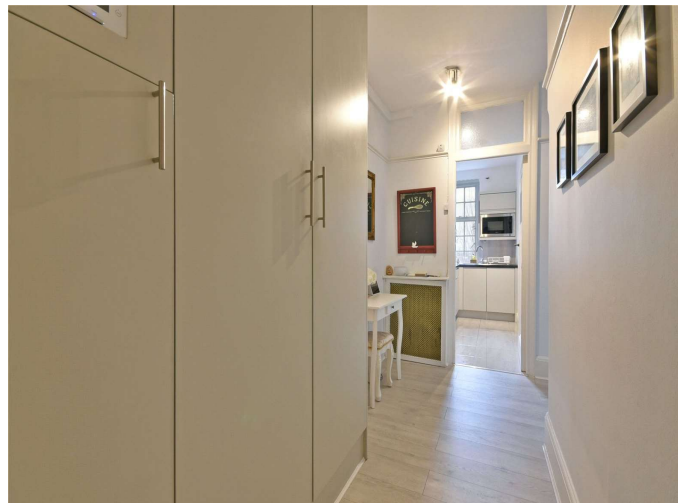


Paramount Finchley Road, West Hampstead NW3



Finchley Road
West Hampstead NW3

£490,000
Share of Freehold



Finchley Road

West Hampstead NW3

£490,000

Share of Freehold

About the Property

With lift access, communal gardens, and a porter this one bedroom, second floor apartment set within a classic mansion block on Finchley Road is stylish and luxurious.

The home has great built-in storage throughout the property and makes fabulous use of all the available space. The wooden flooring that leads you through the hallway and into the living space creates a natural flow from one room into the next, guiding you into the heart of the home.

The contemporary kitchen and bathroom have both been finished to an incredibly high standard. The use of light tiles in the bathroom and light cupboards in the kitchen gives the illusion of larger spaces.

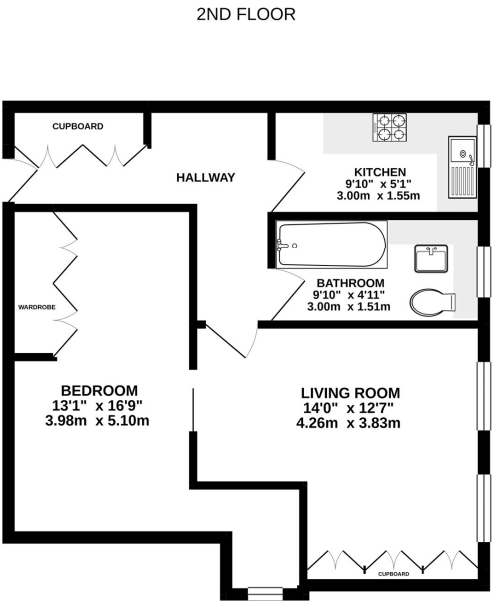
The sliding door into the bedroom creates a cosy and snug feel. The large built-in wardrobe, that is set behind an alcove, creates a personal dressing area and helps keep the room tidy and uncluttered.

Located on Finchley Road this home not only has fabulous transport links but also great access to outdoor spaces including the wonders of Hampstead Heath, that has incredible views over London. Hillside Court is also half a mile to all that West End Lane has to offer including numerous coffee shops, bars, and restaurants.

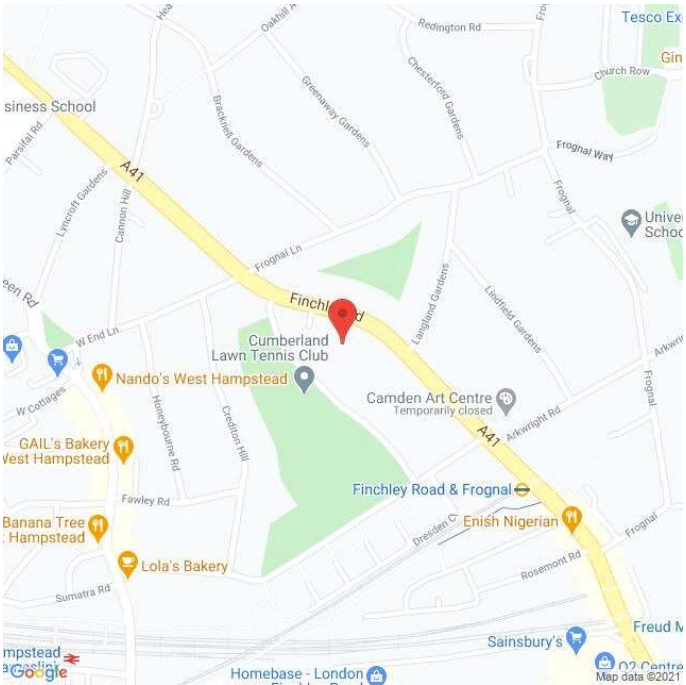
Local Authority: London Borough of Camden
Council Tax: Band C £1443

Energy Efficiency Rating		
	Current	Potential
Very energy efficient - lower running costs		
(92+) A		
(81-91) B		
(69-80) C		
(55-68) D	64	76
(39-54) E		
(21-38) F		
(1-20) G		
Not energy efficient - higher running costs		
EU Directive 2002/91/EC		
England, Scotland & Wales		

Floorplan



Location



All viewings by appointment

Paramount Properties
150 West End Lane
London NW6 1SD
T 020 7644 2331
salesreapit@paramount-properties.co.uk
paramount-properties.co.uk

Whilst every attempt has been made to ensure the accuracy of the floor plans contained here, measurements of doors, windows and rooms are approximate and no responsibility is taken for any error, omission or mis-statement. These plans are for representation purposes only as defined by RICS Code of Measuring Practice and should be used as such by any prospective purchaser. The services, systems and appliances listed in this specification have not been tested and no guarantee as to their operating ability or their efficiency can be given. Although these particulars are thought to be materially correct their accuracy cannot be guaranteed and they do not form part of any contract.