

Dalewood Avenue, SHEFFIELD
Asking Price: £325,000



reedsrains.co.uk

11a Dalewood Avenue, SHEFFIELD
Asking Price: £325,000

An excellent opportunity to acquire this WELL PROPORTIONED, three bedroom DETACHED bungalow with a DRIVEWAY and GARAGE! Whilst in need of some modernisation, this is an opportunity for someone to make their own mark on a property. situated on this quiet tree lined road in the highly sought after residential area of Beauchief.

Entrance Hall

Approached through a front facing entrance door providing access to accommodation.

Kitchen

9'3" x 12'4" (2.82m x 3.76m)

A good sized kitchen fitted with wall and base units and having a work surface area, which incorporates a stainless steel sink and drainer unit beneath a rear facing double glazed window. Having space for a fridge freezer, plumbing for washing machine and a rear facing entrance door leading to the rear garden.

Dining Room

11'8" x 10'3" (3.56m x 3.12m)

A good sized reception room having a side facing double glazed window.

Living Room

17'3" x 12'3" (5.26m x 3.73m)

A good sized reception room with a front facing bay window and a central heating radiator.

Bedroom One

13'3" x 11'3" (4.04m x 3.43m)

A double bedroom having a front facing double glazed window, fitted wardrobes and a central heating radiator.

Bedroom Two

14' x 12'2" (4.27m x 3.7m)

A double bedroom having a rear facing double glazed window, fitted wardrobes and a central heating radiator.

Bedroom Three

10'1" x 4'11" (3.07m x 1.5m)

Having fitted storage cupboard, rear facing double glazed window and central heating radiator.

Bathroom/WC

9'3" x 5'7" (2.82m x 1.7m)

Having a low flush W/C.

Attic Room

External

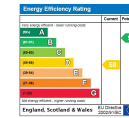
To the front of the property is a small garden with driveway to the side of the property. To the rear is a garden mostly laid to lawn with a garage.

Reeds Rains Limited Registered in England at 2nd Floor, Gateway 2, Holgate Park Drive, York, YO26 4GB
Registered Number 2568254. VAT Reg No. 842 795 983.

All Measurements
All Measurements are Approximate.

Laser Tape Clause
All measurements have been taken using a laser tape measure and therefore, may be subject to a small margin of error.

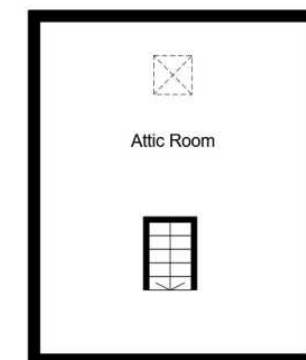
Floorplan Clause
Measurements are approximate. No to Scale. For illustrative purposes only.



For full EPC please contact the branch.



Ground Floor



Attic Floor

Total floor area 126.0 sq. m. (1,356 sq. ft.) approx

This floor plan is for illustrative purposes only. It is not drawn to scale. Any measurements, floor areas (including any total floor area), openings and orientation are approximate. No details are guaranteed, they cannot be relied upon for any purpose and they do not form part of any agreement. No liability is taken for any error, omission or misstatement. A party must rely upon its own inspection(s). Plan produced for Reed Rains. Powered by www.focalagent.com