



THAMES COURT, NORMAN PLACE, READING, RG1

Offers in excess of: £375,000 | Leasehold

**SANSOME
&GEORGE**

THAMES COURT, NORMAN PLACE, READING, RG1

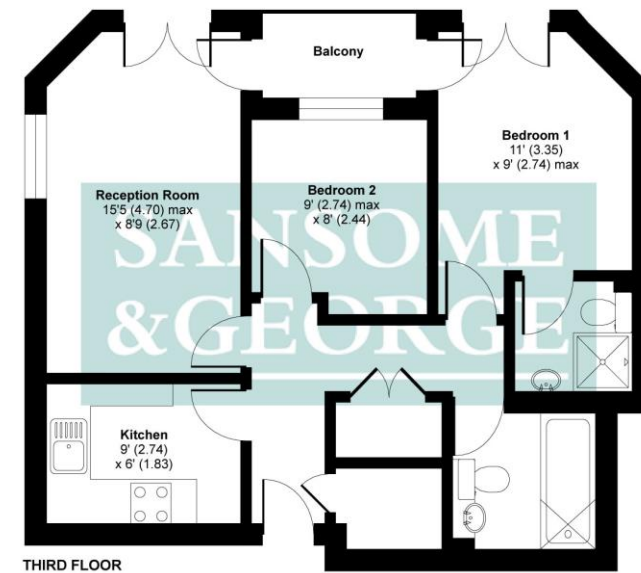
SANSOME & GEORGE THEALE OFFICE - Charming 2 BEDROOM apartment which benefits from a balcony, re-fitted kitchen and re-fitted en-suite shower room to Bedroom 1. Further benefits include allocated parking, Electric gated access and security intercom entry system. This property is available with NO ONWARD CHAIN!

Accommodation & Amenities

- 2 Bedroom Apartment
- Hall, Lounge, Fitted Kitchen
- Bathroom, En-suite to Bed 1
- Bed 2, Bathroom
- Electric gated access
- No onward chain

Thames Court, Norman Place, Reading, RG1

APPROX. GROSS INTERNAL FLOOR AREA 549 SQ FT 51 SQ METRES



Whilst every attempt has been made to ensure the accuracy of the floor plan contained here, measurements of doors, windows and rooms are approximate and no responsibility is taken for any error, omission or misstatement. These plans are for representation purposes only as defined by RICS Code of Measuring Practice and should be used as such by any prospective purchaser. Specifically no guarantee is given on the total square footage of the property if quoted on this plan. Any figure given is for initial guidance only and should not be relied on as a basis of valuation.

Copyright nichecom.co.uk 2019 Produced for Sansome & George REF : 489641

Approximate Gross Internal Area
0 sq. ft / 0.0 sq. m



