



T: 0203 714 0749  
E: london@sothebysrealty.co.uk

United Kingdom | Sotheby's  
INTERNATIONAL REALTY

Guy Bradshaw



## Kensington Gardens Square, W2

Kensington Gardens Square is an inspiring example of heritage and contemporary design, offering a collection of just 30 apartments and one lateral penthouse with secure underground parking and 24-hour concierge. Impeccable levels of design, detail and specification offer a refreshingly modern lifestyle, enabling a first-class living experience in one of London's most sought-after areas

The development is a collaboration between award-winning architects, Brimelow McSweeney and interior designer Lynne Hunt, who have worked in unison to create homes that are both sophisticated yet cutting edge, whilst remaining in character with the surrounding area.

Bayswater which sits to the north side of Hyde Park has experienced huge investment in recent years thanks to its desirable central location with excellent links to Mayfair, the West End and Knightsbridge. Residential values have soared and with further investment earmarked for the future, W2 is now fast becoming London's most stylish new address.

- Third floor
- Two-bedroom
- Two-bathroom
- 24-hour concierge

Leasehold

**Asking Price: £2,480,000**

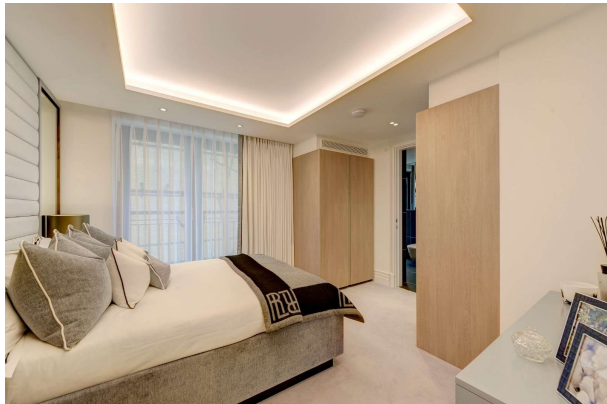
T: 0203 714 0749  
E: london@sothebysrealty.co.uk

United  
Kingdom

**Sotheby's**  
INTERNATIONAL REALTY

Guy Bradshaw





T: 0203 714 0749  
E: london@sothebysrealty.co.uk

United  
Kingdom

Sotheby's  
INTERNATIONAL REALTY

Guy Bradshaw