



T: 0203 714 0749  
E: london@sothebysrealty.co.uk

United Kingdom | Sotheby's  
INTERNATIONAL REALTY

Catharine Che



## Wimbledon Hill Park, SW20

Set in one of South West London's most affluent and desirable locations, Wimbledon Hill Park is an exquisitely crafted development rich in heritage. Beautiful and stylish properties designed and built to impeccable standards; these exclusive homes offer elegant living within a superior setting.

Situated in the heart of Wellington Row, this striking, two-bedroom, ground and first level duplex apartment boasts over 2,088 sq. ft. of living space in total.

The apartment offers a selection of magnificent unique features including original ornate windows, spectacular ceiling heights and two generously sized terraces

To be advised

**Asking Price: £1,850,000**

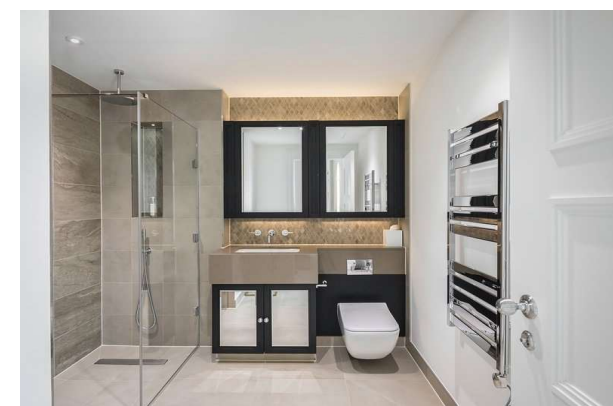
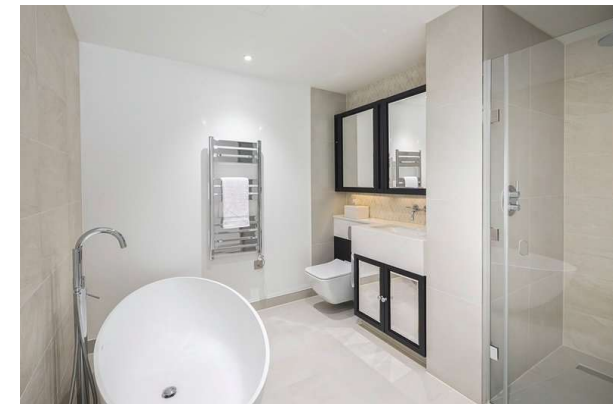
T: 0203 714 0749  
E: london@sothebysrealty.co.uk

United  
Kingdom

**Sotheby's**  
INTERNATIONAL REALTY

Catharine Che





T: 0203 714 0749  
E: london@sothebysrealty.co.uk

United Kingdom | Sotheby's  
INTERNATIONAL REALTY

Catharine Che