



T: 0203 714 0749
E: london@sothebysrealty.co.uk

United
Kingdom | **Sotheby's**
INTERNATIONAL REALTY

Mohamed Zaghloul



Milliner House, SW10

Offering a bright and spacious interior, this expansive 2nd floor, two-bedroom, two-bathroom (master with en-suite and his/hers walk-in wardrobe) luxury apartment boasts a large open-plan reception/fully integrated kitchen, oak laminate flooring, comfort cooling and panoramic windows, which give a plenty of natural light, within this sought-after Chelsea building. Added benefits of lift and concierge.

Milliner House is ideally located for a collection of local shops and cafes, as well as being in close proximity to the shopping areas of the Fulham Broadway and the luxurious Kings Road.

Transport links along the district line from Fulham Broadway allows easy access into the centre of London, with the station situated close by to Stamford Bridge, the home of Chelsea FC.

- 2 Bedrooms
- shower Room
- en Suite Bathroom
- reception Room
- kitchen
- lift

- concierge
- allocated Underground Parking

Leasehold

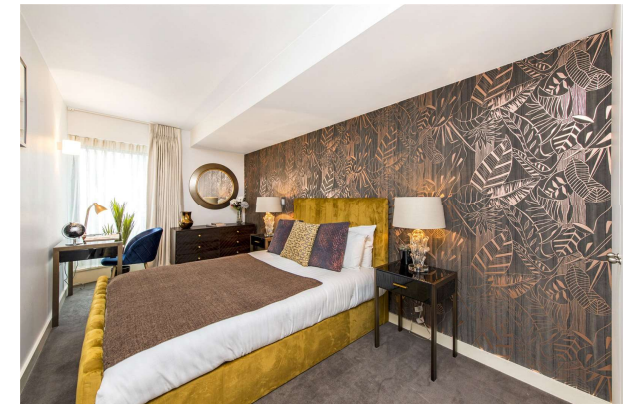
Guide Price: £1,500,000

T: 0203 714 0749
E: london@sothebysrealty.co.uk

United
Kingdom

Sotheby's
INTERNATIONAL REALTY

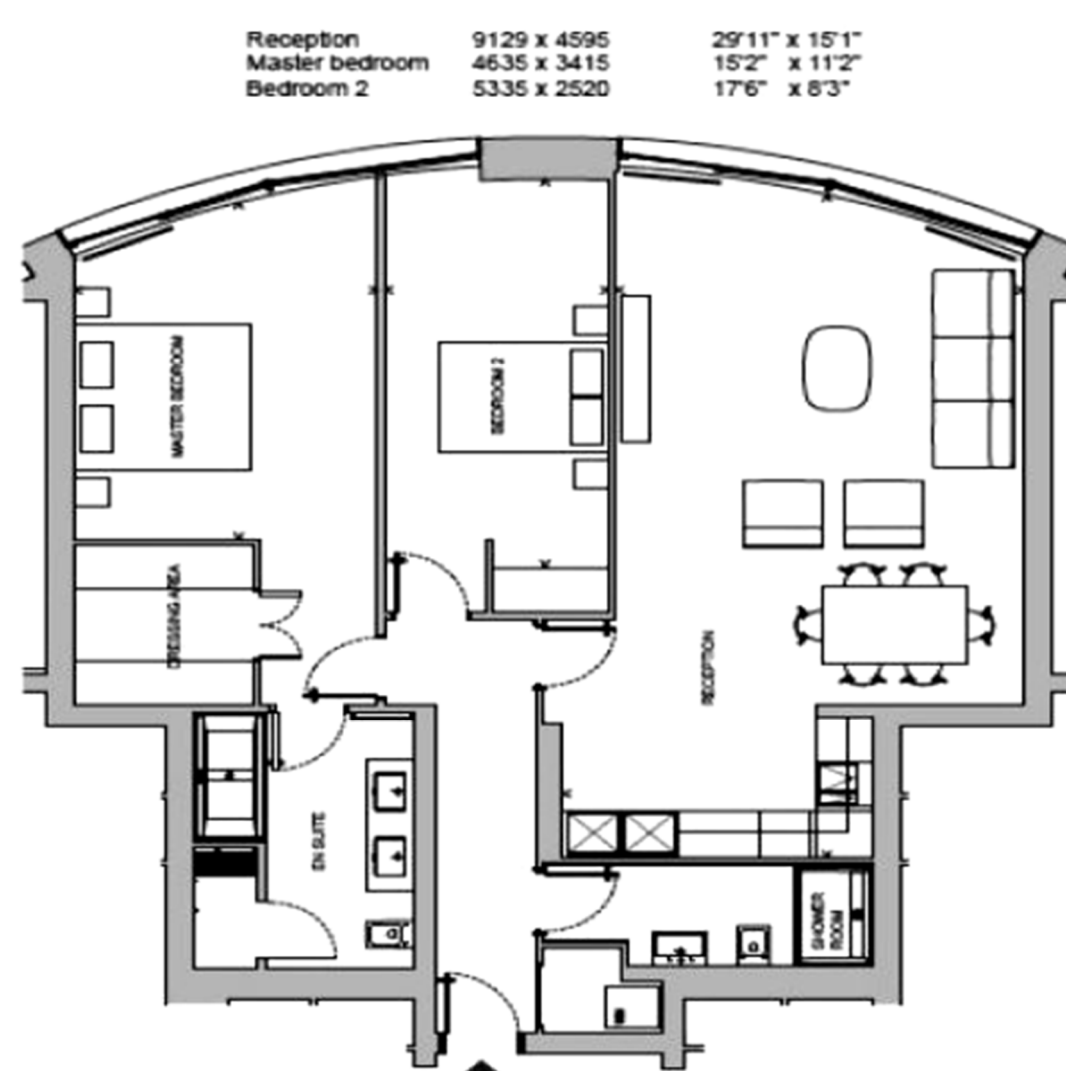
Mohamed Zaghloul



T: 0203 714 0749
E: london@sothebysrealty.co.uk

United
Kingdom | Sotheby's
INTERNATIONAL REALTY

Mohamed Zaghloul



Energy Efficiency Rating		
	Current	Potential
Very energy efficient - lower running costs		
(92+) A		
(81-91) B	86	87
(69-80) C		
(55-68) D		
(39-54) E		
(21-38) F		
(1-20) G		
Not energy efficient - higher running costs		
England, Scotland & Wales	EU Directive 2002/91/EC	

T: 0203 714 0749
E: london@sothebysrealty.co.uk

United Kingdom | Sotheby's
INTERNATIONAL REALTY

Mohamed Zaghloul