



T: 0203 714 0749
E: london@sothebysrealty.co.uk

United
Kingdom

Sotheby's
INTERNATIONAL REALTY

Mohamed Zaghloul



Hyde Park Gardens, W2

Gated development with stunning views overlooking Hyde Park.

This lateral three-bedroom period apartment is located on the top floor (with lift) of Hyde Park Gardens, a prestigious white stucco terrace with astonishing views over Hyde Park. The property is well proportioned with two large reception rooms, a separate kitchen, three double bedrooms and two bath/shower rooms. Hyde Park Gardens is a gated development benefitting from beautiful communal gardens, 24-hour porters and secure parking.

Hyde Park Gardens borders Hyde Park and is one of London's premier addresses. The property is located within close proximity of Lancaster Gate and Paddington Stations. Share of Freehold, grade II Listed. 1,783 Sq Ft.

Leasehold

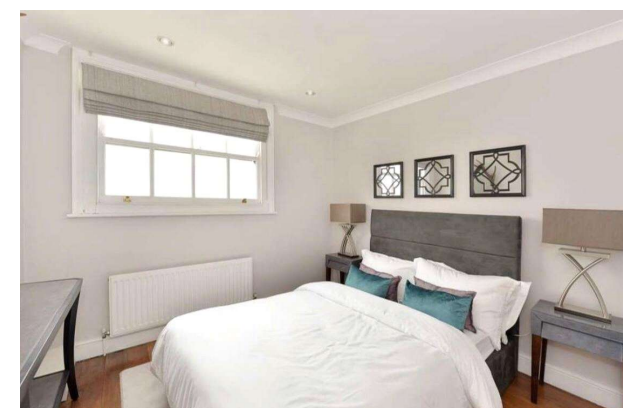
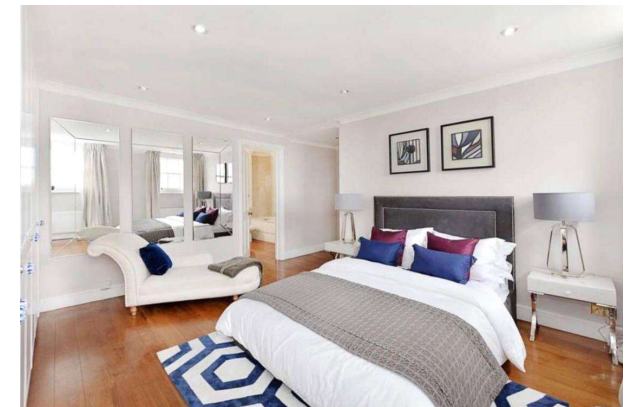
Asking Price: £3,500,000

T: 0203 714 0749
E: london@sothebysrealty.co.uk

United
Kingdom

Sotheby's
INTERNATIONAL REALTY

Mohamed Zaghloul



T: 0203 714 0749
E: london@sothebysrealty.co.uk

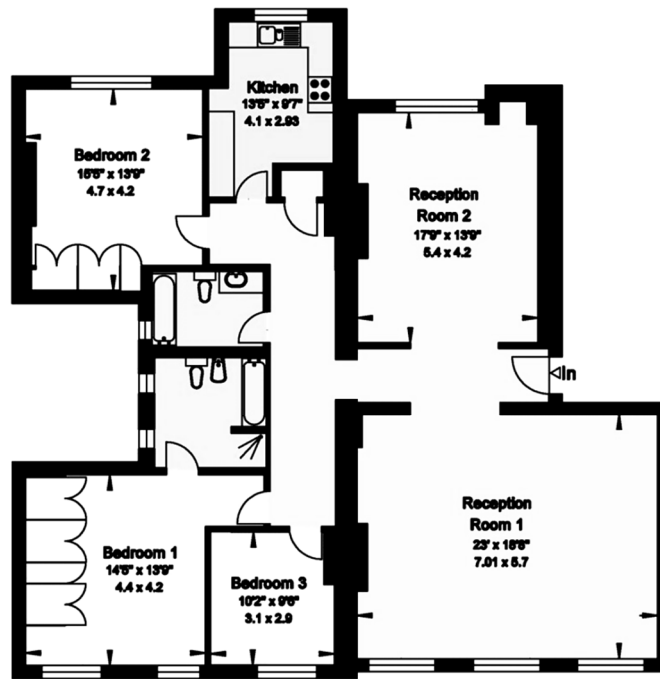
United Kingdom | Sotheby's
INTERNATIONAL REALTY

Mohamed Zaghloul



Hyde Park Gardens
London W2

Gross Internal Area = 165 sq. metres
1783 sq. feet



Fourth Floor

Energy Efficiency Rating		
	Current	Potential
Very energy efficient - lower running costs		
(92-) A		
(81-91) B		
(69-80) C		
(55-68) D		
(39-54) E	43	52
(21-38) F		
(1-20) G		
Not energy efficient - higher running costs		
England, Scotland & Wales	EU Directive 2002/91/EC	

T: 0203 714 0749
E: london@sothebysrealty.co.uk

United
Kingdom

Sotheby's
INTERNATIONAL REALTY

Mohamed Zaghloul