



T: 0203 714 0749
E: london@sothebysrealty.co.uk

United Kingdom | Sotheby's
INTERNATIONAL REALTY

Diana Tran



The Piazza Residence, Covent Garden, WC2R

Sotheby's International Realty presents this contemporary two-bedroom, two-bathroom apartment approx. (931 sq. ft.) situated on the 3rd (with lift) within this 24-hour security and concierge boutique development moments from the famous Piazza in Covent Garden.

The Piazza Residence is ideally located in the heart of Covent Garden for many amenities for shops, bars and restaurants and is within easy reach to transport links; Charing Cross Station (Southeastern / 0.2 miles), Charing Cross (Bakerloo & Northern Line / 0.3 miles) and Embankment (Bakerloo, Circle, District and Northern Lines / 0.3miles).



- Two bedrooms
- Two bathrooms
- 24-hour security

- Third floor with lift
- 931 sq ft
- Balcony

Long Let, Minimum term 6 months

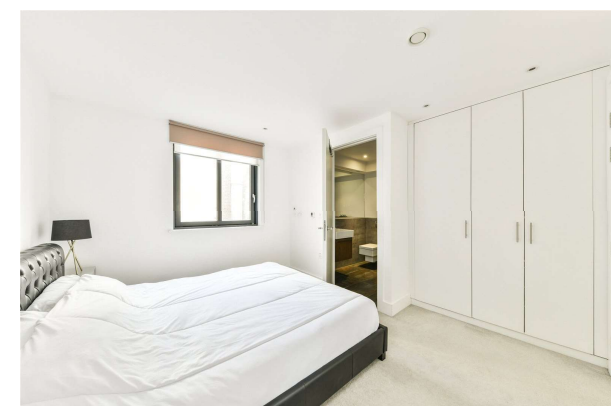
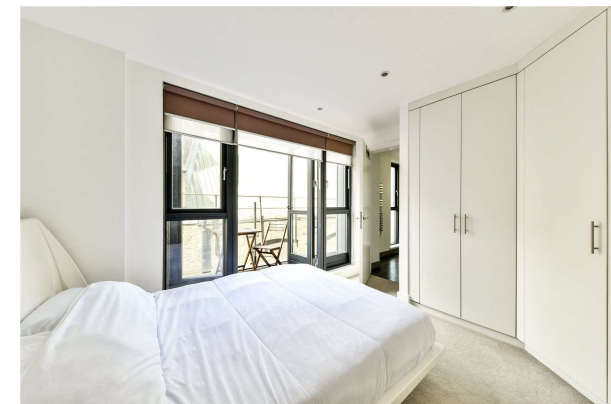
£875 per week

T: 0203 714 0749
E: london@sothebysrealty.co.uk

United
Kingdom

Sotheby's
INTERNATIONAL REALTY

Diana Tran



T: 0203 714 0749
E: london@sothebysrealty.co.uk

United Kingdom | Sotheby's
INTERNATIONAL REALTY

Diana Tran