



T: 0203 714 0749
E: london@sothebysrealty.co.uk

United Kingdom | Sotheby's
INTERNATIONAL REALTY

Shereen Malik



Woodstock House, Marylebone, W1U

This apartment has been meticulously designed throughout with contemporary features and an open plan design.

There are two-bedroom suites both flooded with natural light and decorated in neutral tones. Both bathrooms are fitted with Carrara Marble, Catalano sanitary ware and crosswater fixtures and fittings.

The kitchen is bespoke paired with a Brescia marble kitchen work top and splashback. This space can also be divided from the dining/living with sliding doors. The original sash windows in the living room and kitchen add character to this apartment and also allow ample amounts of light into the room.

The kitchen and living room are west facing, whilst the two bedrooms are situated over the rear of the building and are quiet with the morning east facing sun. This will appeal to those wanting a home or investment property in the centre of the village.

This purpose-built block is located on the east side of Marylebone High Street, close to the junction with New Cavendish Street. The shopping facilities of Oxford Street and Bond Street Underground Stations are within close proximity

- Two bedrooms
- Two bathrooms
- Flooded with natural light
- Original sash windows
- Marylebone location

Leasehold

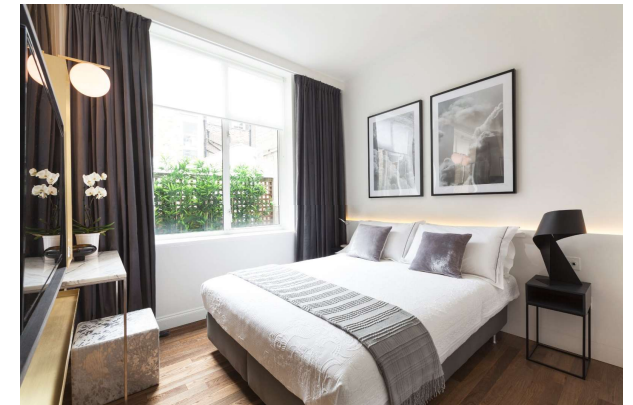
Asking Price: £2,500,000

T: 0203 714 0749
E: london@sothebysrealty.co.uk

United
Kingdom

Sotheby's
INTERNATIONAL REALTY

Shereen Malik



T: 0203 714 0749
E: london@sothebysrealty.co.uk

United Kingdom | Sotheby's
INTERNATIONAL REALTY

Shereen Malik

1 Woodstock House



T: 0203 714 0749
 E: london@sothebysrealty.co.uk

United
 Kingdom

Sotheby's
 INTERNATIONAL REALTY

Shereen Malik