



Commodore Building, 5 Wolseley Street, SE1 2BP
£625,000

EPC T





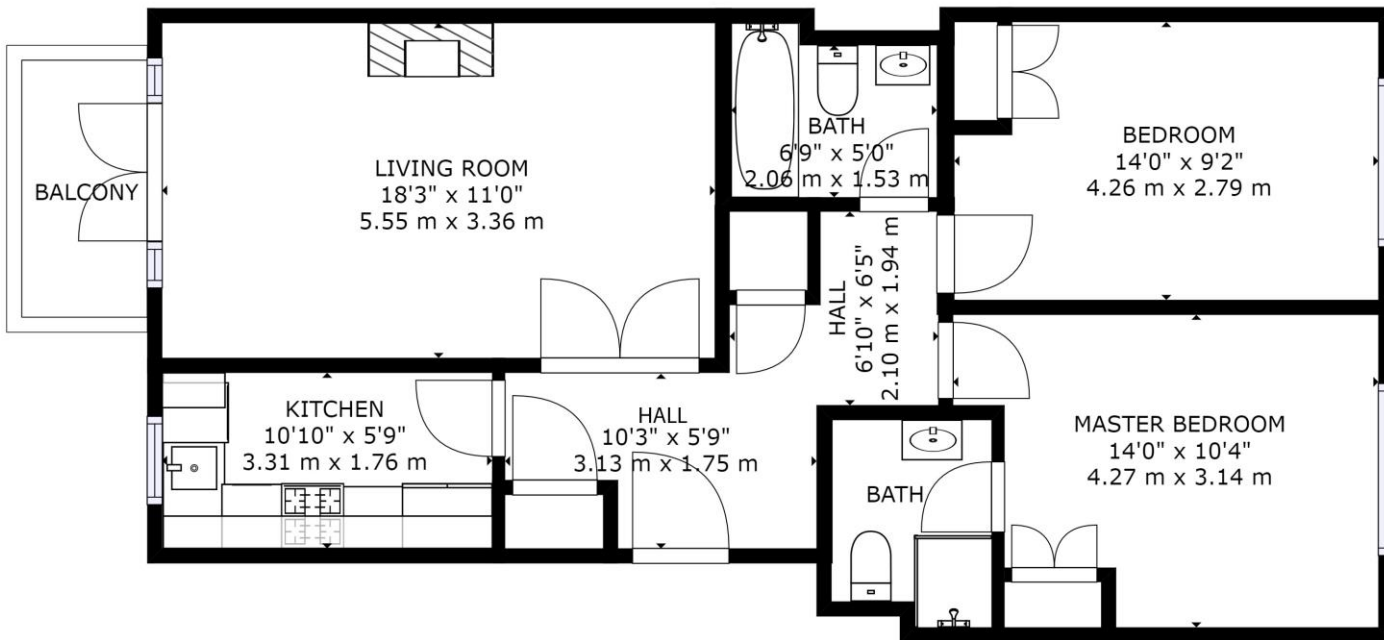
A bright 2nd floor two-bedroom apartment in Shad Thames, close to Bermondsey and the newly opened London Bridge Station. Commodore building is a small secure development made up of 12 apartments.

Residents are free to enjoy the huge roof terrace with stunning views across the city alongside secure underground car parking. The apartment itself also benefits from a newly refurbished private balcony.

The Thameslink Programme has transformed nearby London Bridge station to make it bigger, better and fully accessible, cementing the area as a major hub for the capital with new shops bars, galleries and cafes. Both Tower Bridge and Bermondsey street are located within close proximity to the flat and the River Thames is a short stroll away.



- Two bedrooms
- Large living area leading to balcony
- Secure underground parking
- Communal roof terrace



GROSS INTERNAL AREA

TOTAL: 735 sq ft, 68 m²

SIZES AND DIMENSIONS ARE APPROXIMATE, ACTUAL MAY VARY.



Viewing arrangement by appointment 0203 911 3661

se1@stirlingackroyd.com

56 Borough High Street, SE1 1XF

stirlingackroyd.com

STIRLING ACKROYD_STI015_BAN190042_DTL004_10

