



Solarium Court, 105 Alscot Road, SE1 3AW
£300,000

EPC **F**





A beautifully presented one bed apartment in a unique Art Deco conversion with communal roof terrace and courtyard.

Spanning 386 sq ft, the accommodation comprises a double bedroom with built in storage, smart fully tiled shower room and an impressive reception and kitchen space, with two large windows, dining area, bespoke book storage and modern fitted kitchen.

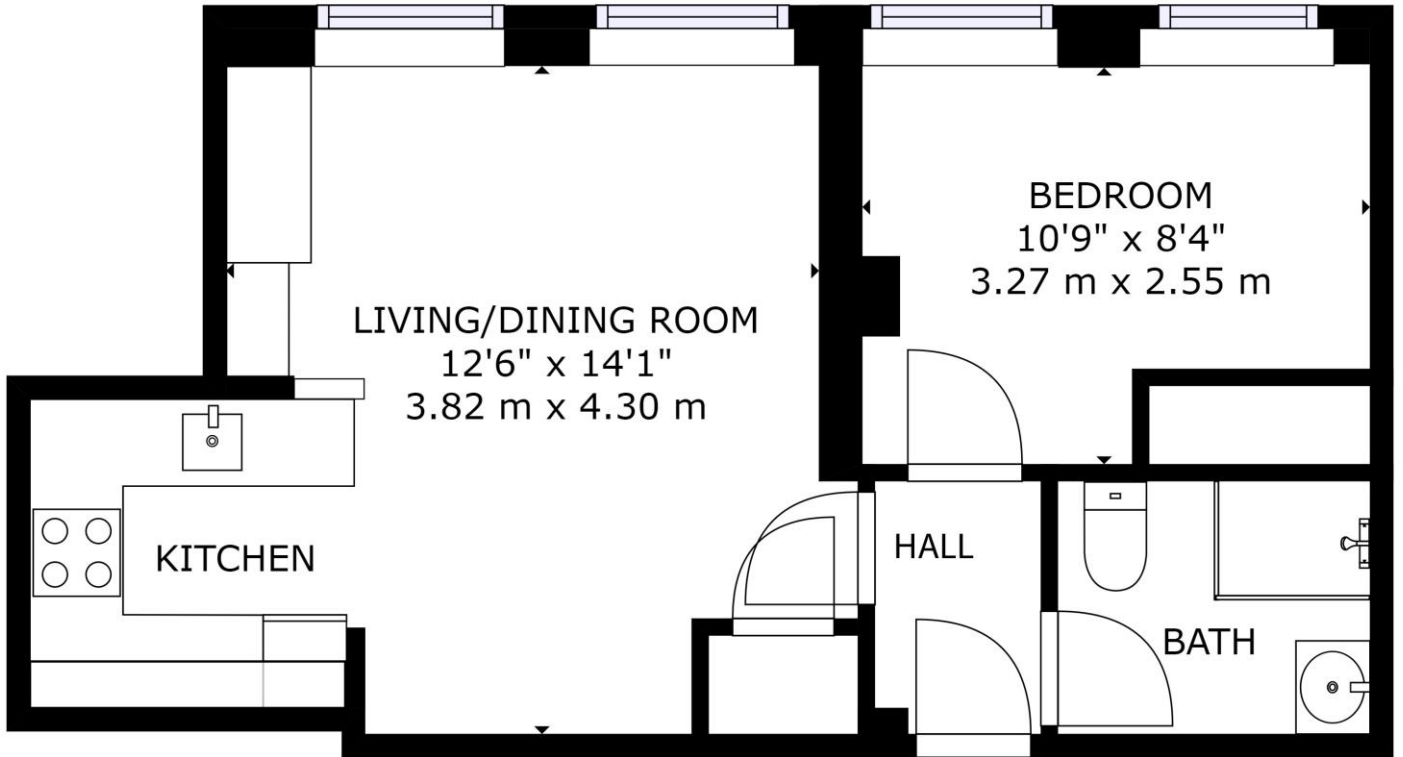
The apartment is set within walking distance of the shops, bistros, bars, restaurants and transport links of Bermondsey Street and Bermondsey Station.

The property is serviced by excellent bus routes and is within walking distance of Bermondsey tube and set over the road from Spa Gardens. Bermondsey Street and Maltby Street market are close by.

A great first time home or rental investment well placed for transport with London Bridge (Overland rail, Jubilee & Northern lines) and Bermondsey (Jubilee).

- Roof Terrace with Amazing Views
- Characterful Building
- Great Transport Links
- Quiet Street





GROSS INTERNAL AREA
TOTAL: 386 sq ft, 36 m²
SIZES AND DIMENSIONS ARE APPROXIMATE, ACTUAL MAY VARY.



Viewing arrangement by appointment 0203 911 3661

se1@stirlingackroyd.com

56 Borough High Street, SE1 1XF

stirlingackroyd.com

STIRLING ACKROYD_STI015_BAN190178_DTL004_10

