



Glenrose Court, 217 Long Lane, SE1 4PA  
**£730,000**

EPC **C**





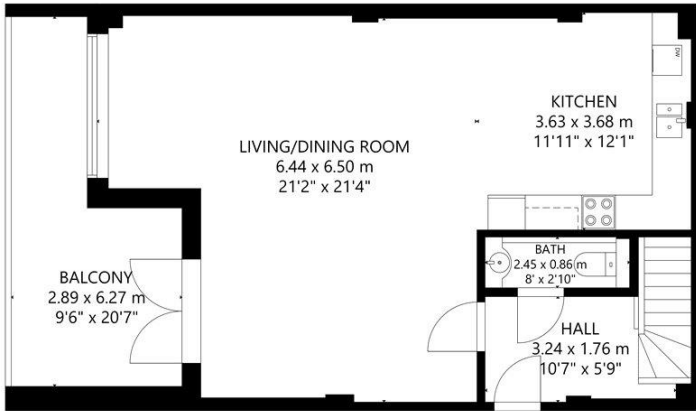
Modern two bedrooms, two bathrooms c1200 square feet live/work maisonette in Glenrose Court, Coach House Mews.

Glenrose Court is a gated development at the bottom of Long Lane, at the bottom of Bermondsey Street and half a mile from London Bridge Station. The lease has 125 years from 01/01/2004.

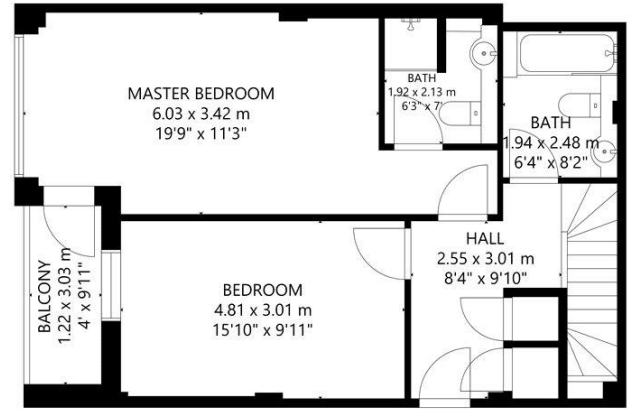
With a wealth of entertaining space, guest WC, private balcony and terrace with a view of the Shard this would be the perfect home, nestled in a very private and quiet close in the heart of SE1.

- Two Bedrooms, Two Bathrooms – One Ensuite
- Lift Access
- Gated Development
- Balcony and Terrace
- View of the Shard





FLOOR 1



FLOOR 2

GROSS INTERNAL AREA  
 TOTAL: 1,268 sq ft/ 118 m<sup>2</sup>  
 SIZE AND DIMENSIONS ARE APPROXIMATE ACTUAL MAY VARY



Viewing arrangement by appointment 0203 911 3661

[se1@stirlingackroyd.com](mailto:se1@stirlingackroyd.com)

56 Borough High Street, SE1 1XF

**[stirlingackroyd.com](http://stirlingackroyd.com)**

STIRLING ACKROYD\_STI015\_BAN190209\_DTL004\_10

